

TEST REPORT FOR:

**The Tracy Law Firm**  
**2013 Honda Fit 5-Door Hatchback**



TESTED TO:

**64.4 km/h 40% Moderate Overlap Frontal Impact**

PREPARED FOR:

**The Tracy Law Firm**  
**4701 Bengal St.**  
**Dallas, TX 75235**

TEST REPORT NUMBER:

**TR-P37391-01-NC**

REPORT DATE:

**January 25, 2018**

TEST DATE:

**December 19, 2017**

---

**KARCO Engineering, LLC.**  
Automotive and Safety Testing Facility  
9270 Holly Road, Adelanto, CA 92301  
Tel: (760) 246-1672 Fax: (760) 246-8112  
[www.KARCO.com](http://www.KARCO.com)

KARCO Engineering compiled this publication for information gathering only. The findings and conclusions expressed in this publication are those of the authors and not necessarily those of any other organization. KARCO Engineering provides test services only and is not involved in consulting, product design or the manufacturing of any automotive products. KARCO does not warrant, supervise or monitor compliance of products or services except as specifically agreed to in writing. By their very nature, testing, analysis and other KARCO services are limited in scope and subject to expected measurement variability. No activity by KARCO Engineering can release a manufacturer from product or any other liability. The results, findings and conclusions expressed in this publication relate only to the items tested for the specific situation simulated in the test.

Tested By: Amjad A. Jadallah  
Mr. Amjad A. Jadallah  
Project Engineer

Report By: Robert S. Ramos  
Mr. Robert S. Ramos  
Program Manager

Reviewed By: Andrew J. Espindola  
Mr. Andrew J. Espindola  
Quality Assurance Manager

Approved By: Michael L. Dunlap  
Mr. Michael L. Dunlap  
Director of Operations

Approval Date: January 25, 2018

**REVISION CONTROL LOG**

**TR-P37391-01**

<b>Revision</b>	<b>Date</b>	<b>Description</b>
-NC	01/25/18	Original Test Report

## TABLE OF CONTENTS

<u>Section</u>		<u>Page No.</u>
1	Introduction	1
2	Data Sheets	2

<u>Data Sheet No.</u>		<u>Page No.</u>
1	General Test and Vehicle Parameter Data	3
2	Dummy Longitudinal Clearance Dimensions	5
3	Dummy Lateral Clearance Dimensions	6
4	Test Vehicle Instrumentation and Camera Summary	7
5	Post-Test Observations	8
6	Driver Dummy Injury Summary	9
7	Driver Side Intrusion Measurements	10

<u>Appendix</u>		<u>Page No.</u>
A	Photographs	A
B	Data Plots	B

## **SECTION 1 INTRODUCTION**

### **PURPOSE**

This 64.4 km/h 40% moderate overlap frontal impact test was conducted for the Tracy Law Firm. The test was conducted in accordance with the test request provided by the Tracy Law Firm. The test request was based on the IIHS Moderate Overlap Frontal Crashworthiness Evaluation Crash Test Protocol (Version XVIII) and the Office of Vehicle Safety Compliance Laboratory Test Procedure TP208-14 for FMVSS 208, dated April 16, 2008.

### **SUMMARY**

An offset deformable barrier (ODB) was impacted by a 2013 Honda Fit 5-door hatchback at a velocity of 64.29 km/h. The test was performed at KARCO Engineering, LLC. on December 19, 2017. Pre- and post-test photographs of the vehicle and dummies can be found in Appendix A of this report. Three (3) real-time cameras and seven (7) high-speed cameras were used to document the frontal barrier impact event.

One Part 572E 50<sup>th</sup> percentile male anthropomorphic test device (ATD) was placed in each the driver and right front passenger seating positions. The driver 50<sup>th</sup> percentile ATD was placed according to dummy placement instructions specified in the IIHS “Guidelines for Using the UMTRI ATD Positioning Procedure for ATD and Seat Positioning” and the passenger 50<sup>th</sup> percentile ATD was placed according to dummy placement instructions specified in the FMVSS 208 laboratory test procedure.

Both ATDs were fully instrumented with head, chest and pelvis tri-axial accelerometers, chest displacement potentiometers, upper neck force transducers, right / left femur load cells, and lower leg instrumentation. The 114 channels of dummy and vehicle response data were recorded on an on-board data acquisition system. Appendix B contains the dummy response data traces.

**SECTION 2**  
**DATA SHEETS**

Test Vehicle: 2013 Honda Fit 5-Door Hatchback Project No.: P37391-01  
 Test Program: 64.4 km/h 40% Moderate Overlap Frontal Impact Test Date: 12/19/17

**CONVERSION FACTORS**

Quantity	Typical Application	Std Units	Metric Unit	Multiply By
Mass	Vehicle Weight	lb	kg	0.4536
Linear Velocity	Impact Velocity	miles/hr	km/hr	1.609344
Length or Distance	Measurements	in	mm	25.4
Volume	Fuel Systems	gal	liter	3.785
Volume	Small Fluids	oz	mL	29.574
Pressure	Tire Pressures	lbf/in <sup>2</sup>	kPa	6.895
Temperature	General Use	°F	°C	$=(T_f - 32)/1.8$
Force	Dynamic Forces	lbf	N	4.448
Moment	Torque	lbf-ft	N•m	1.355

## DATA SHEET NO. 1

### GENERAL TEST AND VEHICLE PARAMETER DATA

Test Vehicle: 2013 Honda Fit 5-Door Hatchback Project No.: P37391-01  
 Test Program: 64.4 km/h 40% Moderate Overlap Frontal Impact Test Date: 12/19/17

### TEST VEHICLE INFORMATION AND OPTIONS

Project Number	P37391-01
Model Year	2013
Make	Honda
Model	Fit
Body Style	5-Door Hatchback
VIN	JHMGE8H31DC010178
Body Color	Blue
Odometer Reading (km / mi)	146,783 / 91,207
Engine Displacement (L)	1.5
Type / No. of Cylinders	Inline 4
Engine Placement	Transverse
Transmission Type	Automatic
Transmission Speeds	5
Overdrive	Yes
Final Drive	FWD
Roof Rack	No
Sunroof / T-Top	No
Running Boards	No
Tilt Steering Wheel	Yes
Power Seats	No
Anti-Lock Brakes (ABS)	Yes

Traction Control System (TCS)	Yes
Auto-Leveling System	No
Automatic Door Locks	Yes
Power Window Auto-Reverse	Yes
Other Optional Feature	No
Driver Front Airbag	Yes
Driver Curtain Airbag	Yes
Driver Torso Airbag	No
Driver Torso/Pelvis Airbag	Yes
Driver Pelvis Airbag	No
Driver Knee Airbag	No
Pass. Front Airbag	Yes
Pass. Curtain Airbag	Yes
Pass. Torso Airbag	No
Pass. Torso/Pelvis Airbag	Yes
Pass. Pelvis Airbag	No
Pass. Knee Airbag	No
Driver Seat Belt Pretensioner	Yes
Pass. Seat Belt Pretensioner	Yes
Driver Load Limiter	Yes
Pass. Load Limiter	Yes
Other Safety Restraint	No

### DATA FROM CERTIFICATION LABEL

Manufactured By	Honda Motor Co., LTD
Date of Manufacture	Aug-12
Vehicle Type	Passenger Car

GVWR (kg)	1594
GAWR Front (kg)	872
GAWR Rear (kg)	735

### TEST VEHICLE WEIGHTS

	Units	As Delivered Weights (UVW)			As Tested Weights (ATW)		
		Front Axle	Rear Axle	Total	Front Axle	Rear Axle	Total
Left	kg	378.0	218.0		404.0	295.5	
Right	kg	369.0	204.0		421.0	275.0	
Ratio	%	63.9%	36.1%	100.0%	59.1%	40.9%	100.0%
Total	kg	747.0	422.0	1169.0	825.0	570.5	1395.5

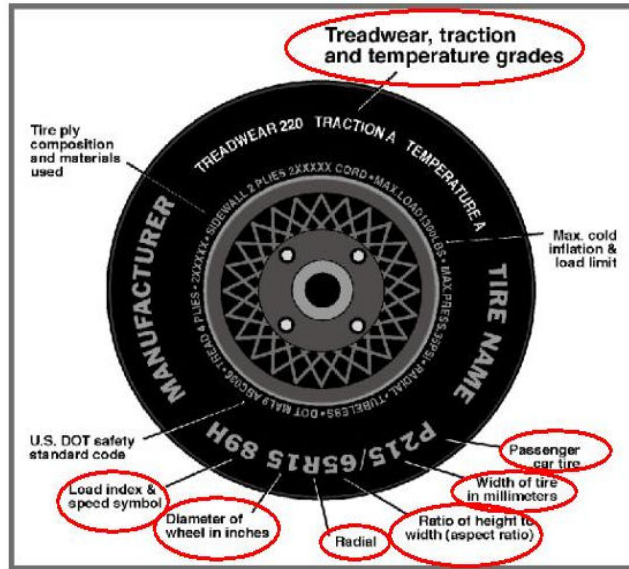
### GENERAL TEST VEHICLE DATA

Measurement Description	Units	Value
Weight of Ballast/Equipment Added	kg	99.5
Weight of Vehicle Components Removed	kg	46.5

**DATA SHEET NO. 1 ... (CONTINUED)**

**GENERAL TEST AND VEHICLE PARAMETER DATA**

Test Vehicle: 2013 Honda Fit 5-Door Hatchback Project No.: P37391-01  
 Test Program: 64.4 km/h 40% Moderate Overlap Frontal Impact Test Date: 12/19/17



**VEHICLE TIRE INFORMATION**

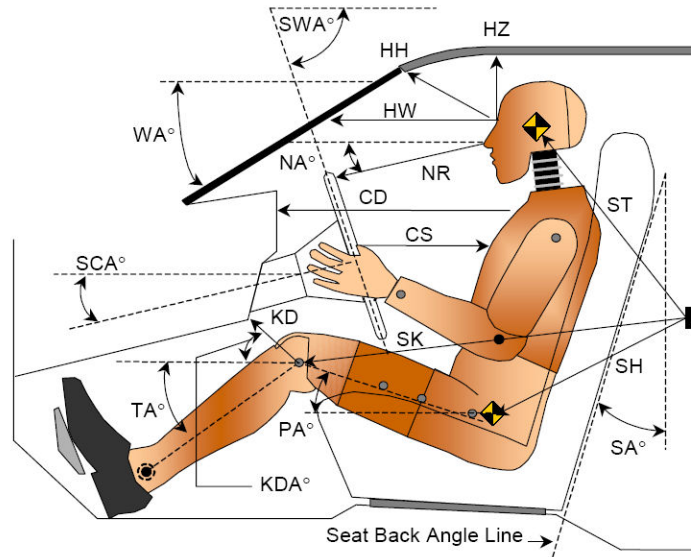
Measured Parameter	Front	Rear
Max. Tire Pressure (kPa)	300	300
Cold Pressure (kPa)	220	220
Recommended Tire Size	175/65 R15	175/65 R15
Tire Size on Vehicle	175/65 R15	175/65 R15
Tire Manufacturer	Bridgestone	Bridgestone
Tire Model	Ecopia	Ecopia
Treadwear	480	480
Traction	A	A
Temperature Grades	A	A
Tire Plies Sidewall	1 Polyester	1 Polyester
Tire Plies Body	1 Polyester, 2 Steel, 1 Nylon	1 Polyester, 2 Steel, 1 Nylon
Load Index / Speed Symbol	84H	84H
Tire Material	Polyester, Steel, Nylon	Polyester, Steel, Nylon
DOT Safety Code Left	OBTW E27	OBTW E27
DOT Safety Code Right	OBTW E27	OBTW E27

## DATA SHEET NO. 2

### DUMMY LONGITUDINAL CLEARANCE DIMENSIONS

Test Vehicle: 2013 Honda Fit 5-Door Hatchback Project No.: P37391-01

Test Program: 64.4 km/h 40% Moderate Overlap Frontal Impact Test Date: 12/19/17



**LEFT SIDE VIEW**

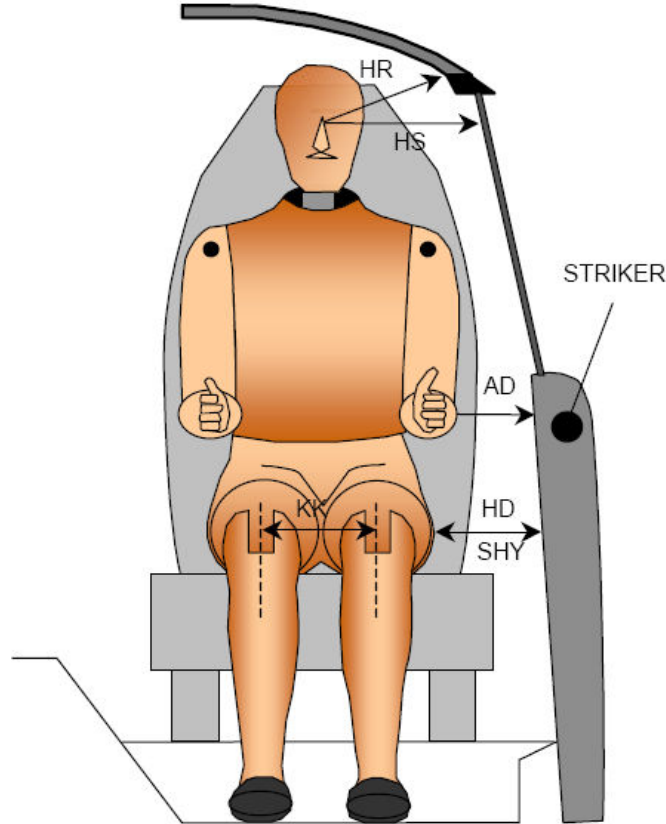
Code	Measurement Description	Driver		Passenger	
		Length (mm)	Angle (°)	Length (mm)	Angle (°)
SA°	Seat Back Angle (On Seat Back)		8.6		8.2
NAS°	Neck Angle, Seated		85.6		
HH	Head to Header	359		340	22.9
NR	Nose to Rim	400		605	31.1
CD	Chest to Dash	572		499	24.6
HCM	Hub to Chest, Minimum	281			
SCH	Steering Wheel to Chest, Horizontal	321	0.0		
SCR	Steering Wheel to Chest, Reference	293			
RA	Rim to Abdomen	192			
KDL	Left Knee to Dash	139	0.0	104	28.1
KDR	Right Knee to Dash	105	0.0	121	34.0
TRA°	Torso Recline Angle		11.9		
PA°	Pelvic Angle		23.6		24.0
TA°	Tibia Angle		53.6		53.5
SK/SKA°	Striker to Knee	613	0.9	617	1.0
CGH	Striker to Head CG, Horizontal (X)	91	0.0	118	0.0
CGL	Striker to Head CG, Lateral (Y)	347	0.0	354	0.0
CGV	Striker to Head CG, Vertical (Z)	516	90.0	528	90.0
SHH	Striker to H-Point, Horizontal (X)	227	0.0	234	0.0
SHZ	Striker to H-Point, Vertical (Z)	128	90.0	127	90.0

**DATA SHEET NO. 3**

**DUMMY LATERAL CLEARANCE DIMENSIONS**

Test Vehicle: 2013 Honda Fit 5-Door Hatchback Project No.: P37391-01

Test Program: 64.4 km/h 40% Moderate Overlap Frontal Impact Test Date: 12/19/17



Code	Description	Driver (mm)	Passenger (mm)
AD	Arm to Door	95	30
HD	H-Point to Door	149	137
HA	Head to A-Pillar	182	230
HR	Head to Side Header	252	205
HS	Head to Side Window	275	362
KK	Knee to Knee	305	270
AA	Ankle to Ankle	280	235

## DATA SHEET NO. 4

### TEST VEHICLE INSTRUMENTATION AND CAMERA SUMMARY

Test Vehicle: 2013 Honda Fit 5-Door Hatchback Project No.: P37391-01

Test Program: 64.4 km/h 40% Moderate Overlap Frontal Impact Test Date: 12/19/17

#### INSTRUMENTATION

Driver Dummy Accelerometers	49
Passenger Dummy Accelerometers	49
Vehicle Structure Accelerometers	16
Total	114

#### CAMERA COVERAGE

High-Speed Off board	5
High-Speed On board	2
Real Time	3
Total	10

**DATA SHEET NO. 5**  
**POST-TEST OBSERVATIONS**

Test Vehicle: 2013 Honda Fit 5-Door Hatchback Project No.: P37391-01  
 Test Program: 64.4 km/h 40% Moderate Overlap Frontal Impact Test Date: 12/19/17

**TEST DUMMY INFORMATION AND CONTACT**

Description	Driver	Passenger
Dummy Type	P572E 50th Percentile Male ATD	P572E 50th Percentile Male ATD
Head Contact	Front Airbag, Curtain Airbag, Headrest	Front Airbag, Headrest
Upper Torso Contact	Front Airbag, Side Airbag	Front Airbag
Lower Torso Contact	None	None
Left Knee Contact	Knee Bolster	Knee Bolster
Right Knee Contact	Knee Bolster, Steering Column	Knee Bolster

**SUPPLEMENTAL RESTRAINT SYSTEM INFORMATION**

Restraint Type	Driver		Passenger	
	Installed	Operated	Installed	Operated
Front Airbag	Yes	Yes	Yes	Yes
Side Airbag 1 (Curtain)	Yes	Yes	Yes	No
Side Airbag 2 (Torso/Pelvis)	Yes	Yes	Yes	No
Knee Airbag	No		No	
Seat Belt Retractor	Yes	Yes	Yes	Yes
Seat Belt Load Limiter	Yes	Yes	Yes	Yes
Other	No		No	

**TEST VEHICLE SPEED DATA**

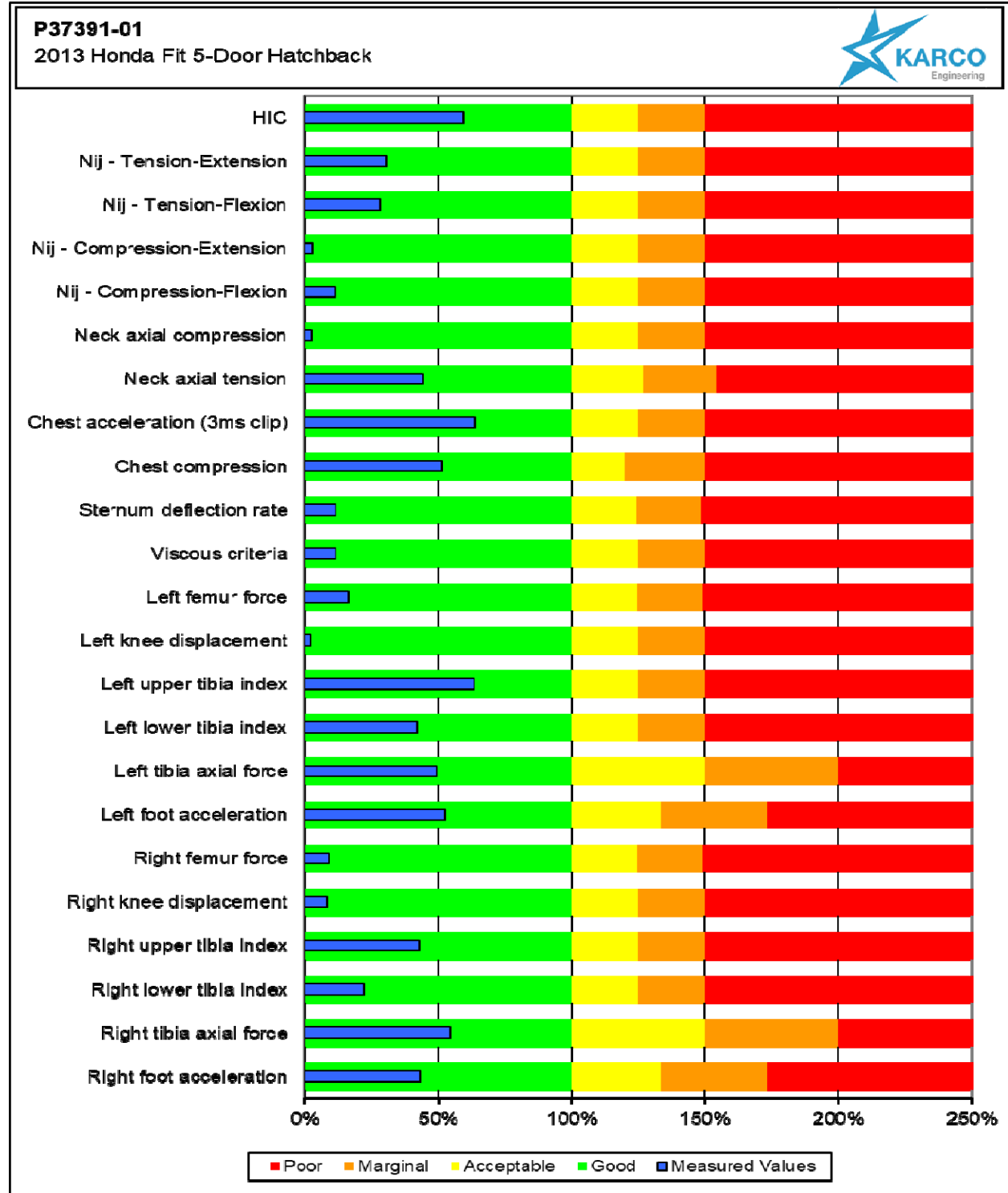
Measured Parameter	Units	Value
Trap No. 1 Velocity (Primary)	km/h	64.29
Trap No. 2 Velocity (Redundant)	km/h	64.16

DATA SHEET NO. 6

DRIVER DUMMY INJURY SUMMARY

Test Vehicle: 2013 Honda Fit 5-Door Hatchback Project No.: P37391-01

Test Program: 64.4 km/h 40% Moderate Overlap Frontal Impact Test Date: 12/19/17



**DATA SHEET NO. 7**

**DRIVER SIDE INTRUSION MEASUREMENTS**

Test Vehicle: 2013 Honda Fit 5-Door Hatchback Project No.: P37391-01

Test Program: 64.4 km/h 40% Moderate Overlap Frontal Impact Test Date: 12/19/17

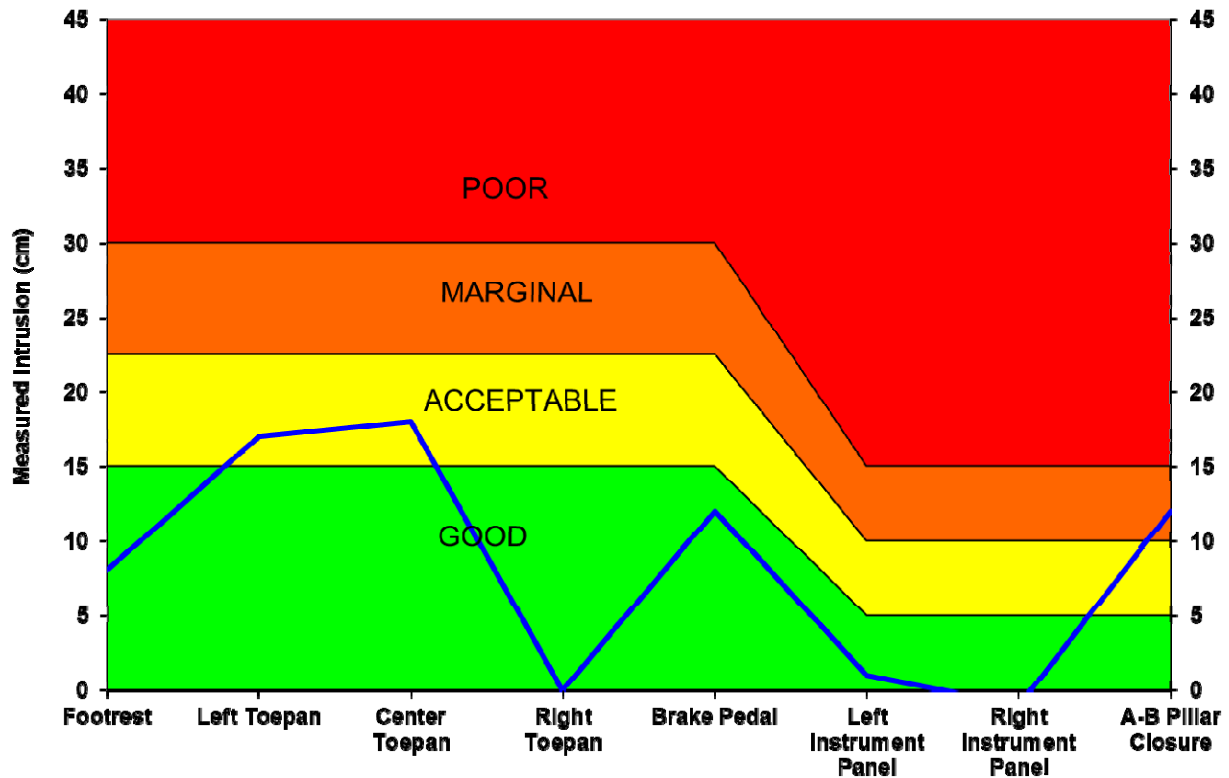
**RESIDUAL MEASUREMENTS OF INTRUSION RELATIVE TO DRIVER SEAT**

Selected Location*	Longitudinal	Lateral	Vertical	Resultant
Steering Column	2	-2	7	7
Left Lower Instrument Panel	-1	0	1	2
Right Lower Instrument Panel	1	0	1	1
Brake Pedal	-10	3	7	12
Left Toepan	-16	-5	2	17
Center Toepan	-17	-6	2	18
Right Toepan	N/A	N/A	N/A	N/A
Footrest	-7	-4	1	8
Average Displacement of the Four Seat Attachment Bolts Relative to Reference System	0	0	-1	N/A
Door Aperture Closure at Beltline	12	--	--	--

\*All measurements taken on driver side. From the driver's position, positive is rearward, right, and up. All measures in centimeters.

**VEHICLE INTRUSION SUMMARY CHART**

**P37391-01 2013 Honda Fit 5-Door Hatchback**



**APPENDIX A  
PHOTOGRAPHS**

## TABLE OF PHOTOGRAPHS

Figure		Page
1	As Received Right Front $\frac{3}{4}$ View of Test Vehicle	A-1
2	As Received Left Rear $\frac{3}{4}$ View of Test Vehicle	A-1
3	Pre-Test Left View of Test Vehicle	A-2
4	Post-Test Left View of Test Vehicle	A-2
5	Pre-Test Left Front $\frac{3}{4}$ View of Test Vehicle	A-3
6	Post-Test Left Front $\frac{3}{4}$ View of Test Vehicle	A-3
7	Pre-Test Front View of Test Vehicle	A-4
8	Post-Test Front View of Test Vehicle	A-4
9	Pre-Test Right Front $\frac{3}{4}$ View of Test Vehicle	A-5
10	Post-Test Right Front $\frac{3}{4}$ View of Test Vehicle	A-5
11	Pre-Test Right View of Test Vehicle	A-6
12	Post-Test Right View of Test Vehicle	A-6
13	Pre-Test Windshield	A-7
14	Post-Test Windshield	A-7
15	Pre-Test Engine Compartment	A-8
16	Post-Test Engine Compartment	A-8
17	Pre-Test Fuel Filler Cap View	A-9
18	Post-Test Fuel Filler Cap View	A-9
19	Pre-Test Front Underbody View of Test Vehicle	A-10
20	Post-Test Front Underbody View of Test Vehicle	A-10
21	Pre-Test Left Front Quarter Panel	A-11
22	Post-Test Left Front Quarter Panel	A-11
23	Pre-Test Vehicle Impact Area	A-12
24	Post-Test Vehicle Impact Area	A-12
25	Pre-Test Front View of Driver Dummy	A-13
26	Post-Test Front View of Driver Dummy	A-13
27	Pre-Test Side View of Driver Dummy	A-14
28	Post-Test Side View of Driver Dummy	A-14
29	Pre-Test Driver Dummy and Vehicle Interior	A-15
30	Post-Test Driver Dummy and Vehicle Interior	A-15
31	Pre-Test Driver's Seat Fore-Aft Markings	A-16
32	Post-Test Driver's Seat Fore-Aft Markings	A-16
33	Pre-Test Driver Dummy Feet	A-17
34	Post-Test Driver Dummy Feet	A-17

## TABLE OF PHOTOGRAPHS ... (CONTINUED)

Figure		Page
35	Post-Test Driver Dummy Face	A-18
36	Post-Test Driver Dummy Contact with Frontal Airbag	A-18
37	Post-Test Driver Dummy Contact with Curtain Airbag	A-19
38	Post-Test Driver Dummy Contact with Knee Bolster	A-19
39	Post-Test Driver Dummy Contact with Steering Column	A-20
40	Pre-Test Steering Column	A-20
41	Post-Test Steering Column	A-21
42	Pre-Test Front View of Passenger Dummy	A-21
43	Post-Test Front View of Passenger Dummy	A-22
44	Pre-Test Side View of Passenger Dummy	A-22
45	Post-Test Side View of Passenger Dummy	A-23
46	Pre-Test Passenger Dummy and Vehicle Interior	A-23
47	Post-Test Passenger Dummy and Vehicle Interior	A-24
48	Pre-Test Passenger's Seat Fore-Aft Markings	A-24
49	Post-Test Passenger's Seat Fore-Aft Markings	A-25
50	Pre-Test Passenger Dummy Feet	A-25
51	Post-Test Passenger Dummy Feet	A-26
52	Post-Test Passenger Dummy Face	A-26
53	Post-Test Passenger Dummy Contact with Frontal Airbag	A-27
54	Post-Test Passenger Dummy Contact with Knee Bolster	A-27
55	Pre-Test Equipment and Ballast	A-28
56	Manufacturer's Label	A-28
57	Tire Information Label	A-29
58	Impact Event	A-29



FIGURE 1. As Received Right Front  $\frac{3}{4}$  View of Test Vehicle



FIGURE 2. As Received Left Rear  $\frac{3}{4}$  View of Test Vehicle



FIGURE 3. Pre-Test Left View of Test Vehicle



FIGURE 4. Post-Test Left View of Test Vehicle



FIGURE 5. Pre-Test Left Front  $\frac{3}{4}$  View of Test Vehicle

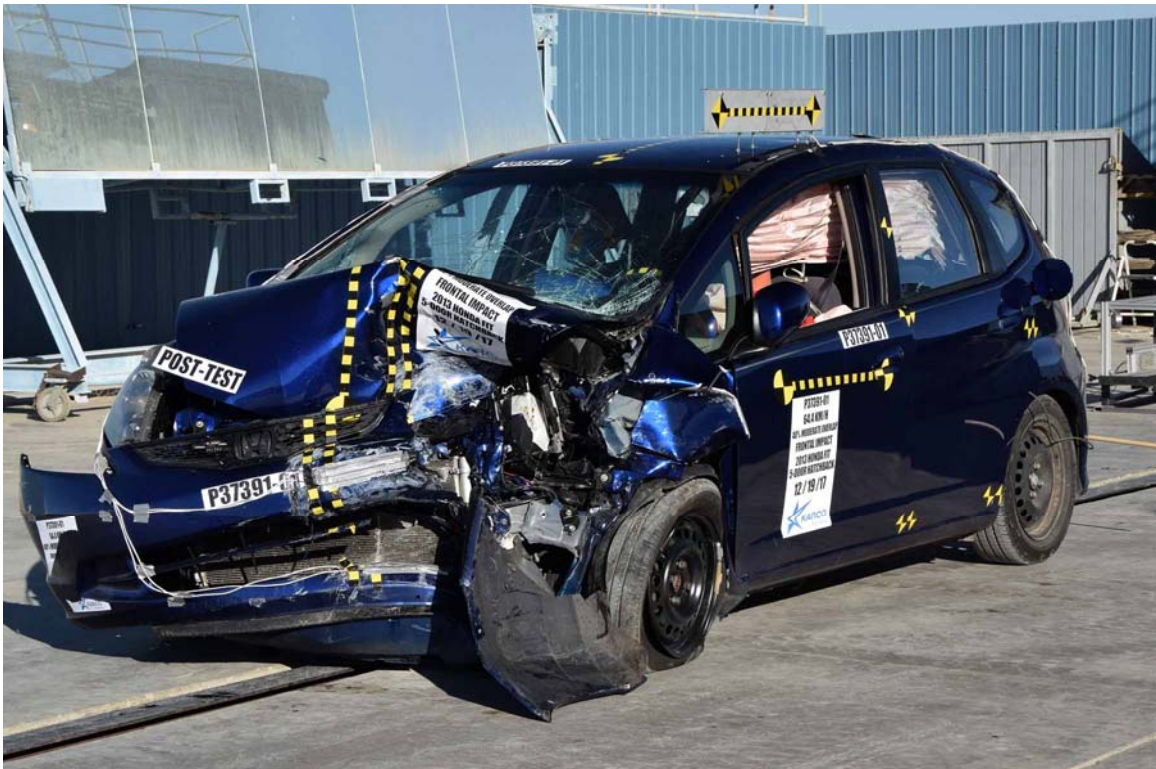


FIGURE 6. Post-Test Left Front  $\frac{3}{4}$  View of Test Vehicle



FIGURE 7. Pre-Test Front View of Test Vehicle

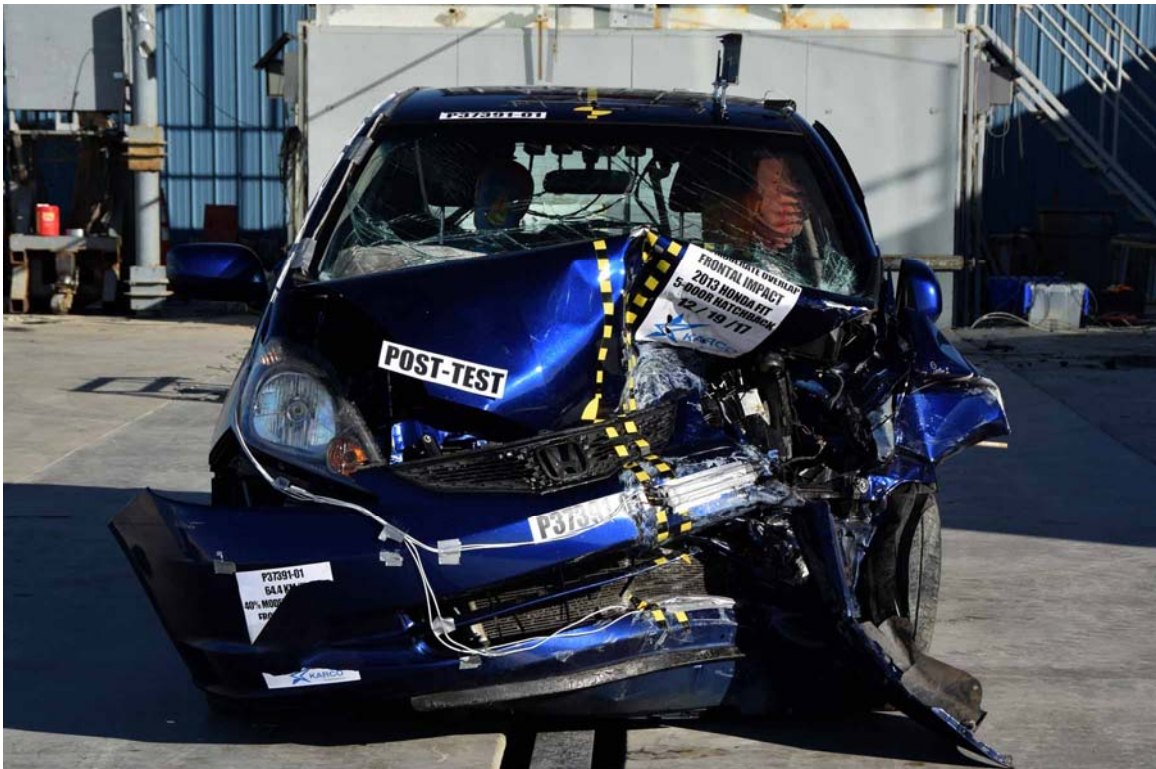


FIGURE 8. Post-Test Front View of Test Vehicle



FIGURE 9. Pre-Test Right Front 3/4 View of Test Vehicle

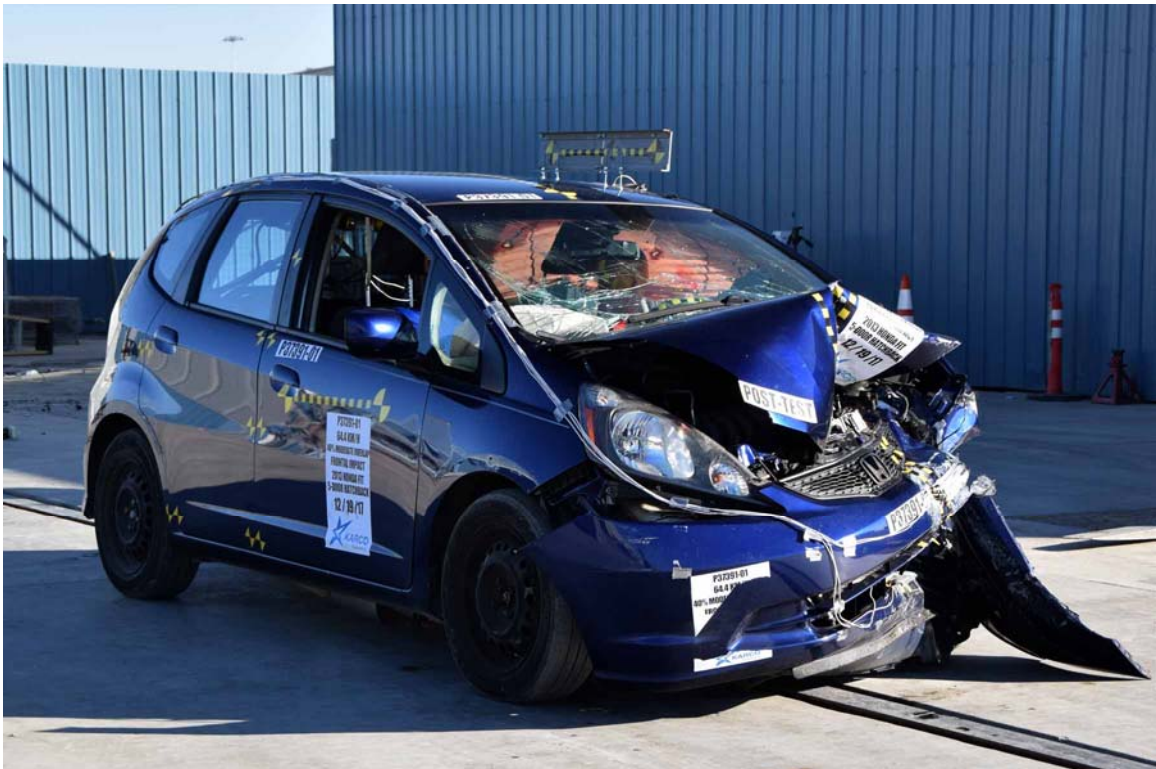


FIGURE 10. Post-Test Right Front 3/4 View of Test Vehicle



FIGURE 11. Pre-Test Right View of Test Vehicle



FIGURE 12. Post-Test Right View of Test Vehicle



FIGURE 13. Pre-Test Windshield



FIGURE 14. Post-Test Windshield



FIGURE 15. Pre-Test Engine Compartment

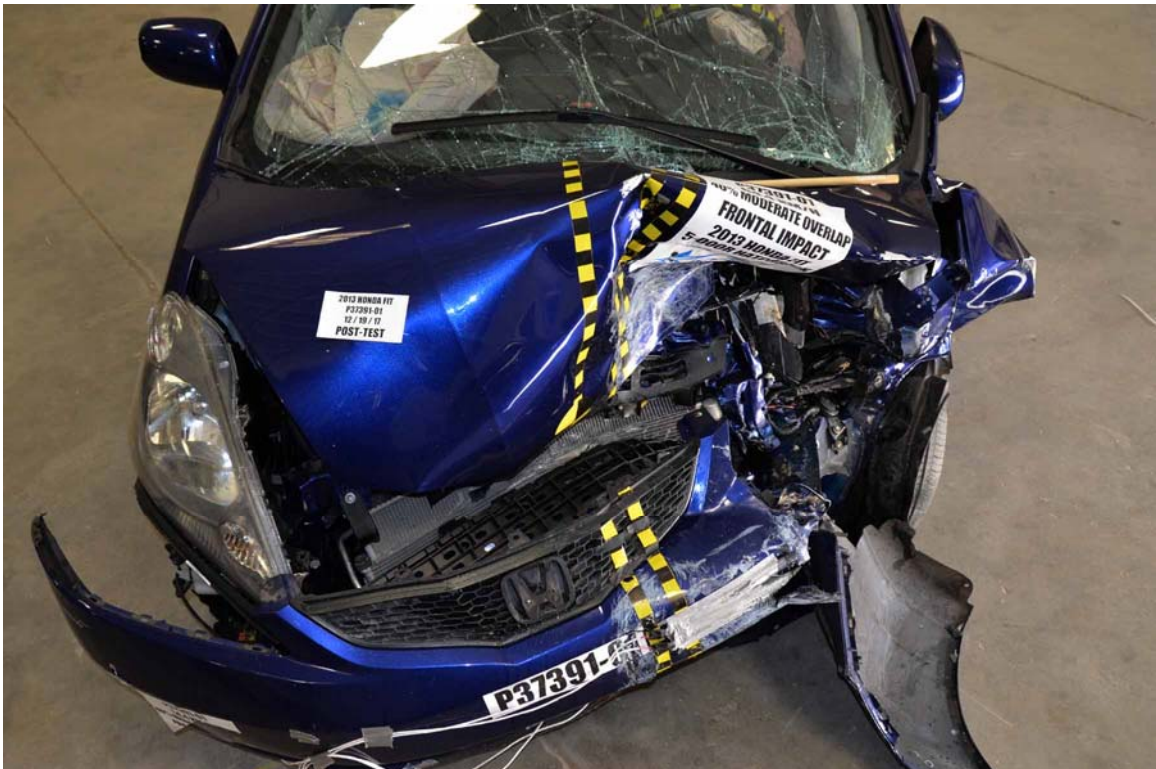


FIGURE 16. Post-Test Engine Compartment



FIGURE 17. Pre-Test Fuel Filler Cap View

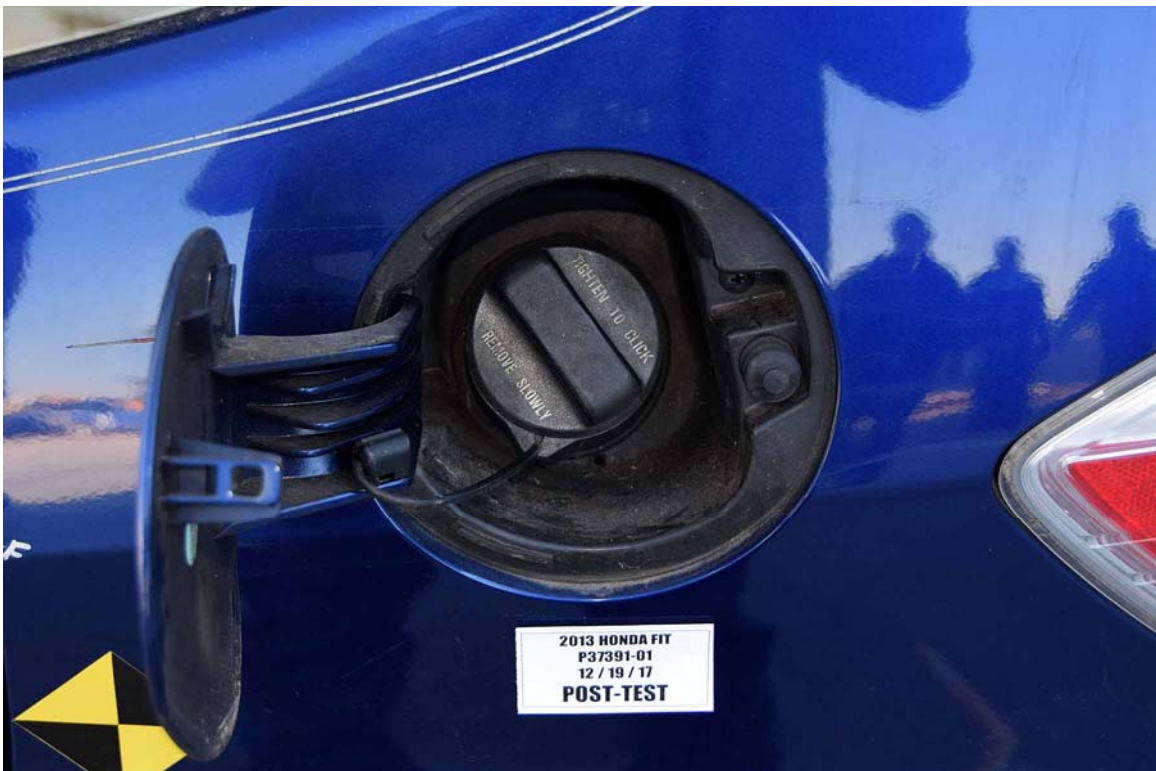


FIGURE 18. Post-Test Fuel Filler Cap View



FIGURE 19. Pre-Test Front Underbody View of Test Vehicle

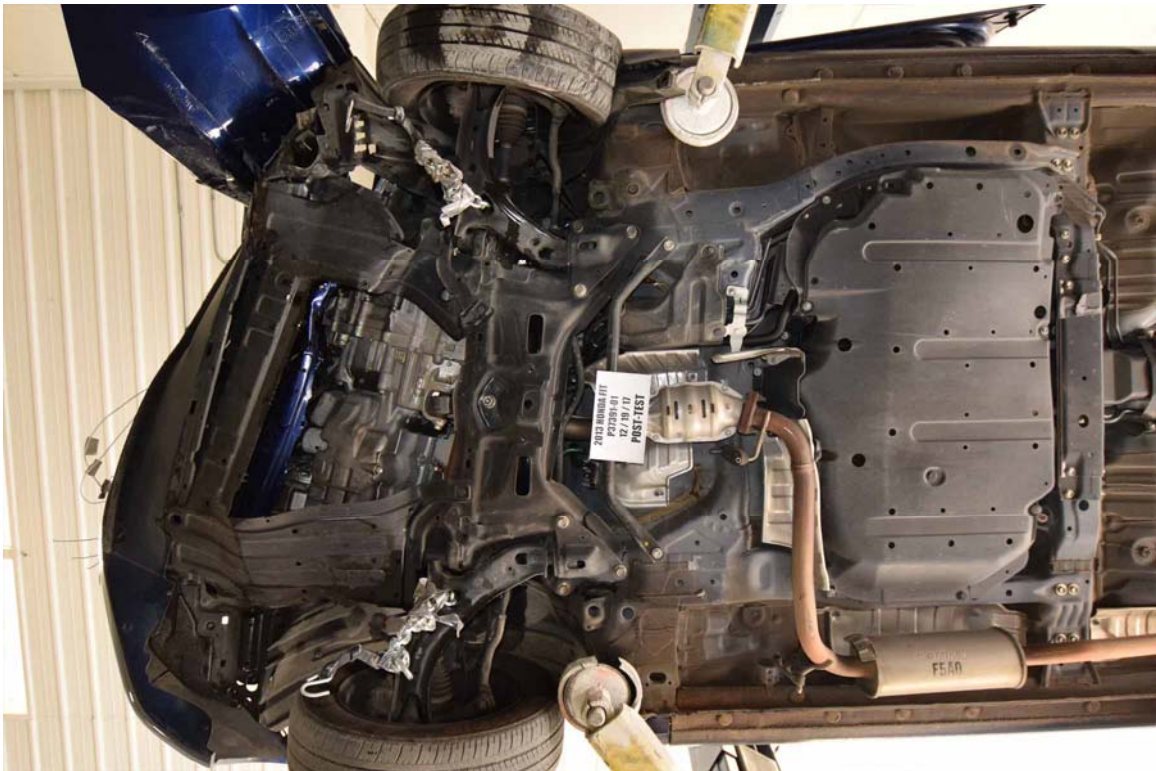


FIGURE 20. Post-Test Front Underbody View of Test Vehicle



FIGURE 21. Pre-Test Left Front Quarter Panel



FIGURE 22. Post-Test Left Front Quarter Panel



FIGURE 23. Pre-Test Vehicle Impact Area



FIGURE 24. Post-Test Vehicle Impact Area



FIGURE 25. Pre-Test Front View of Driver Dummy

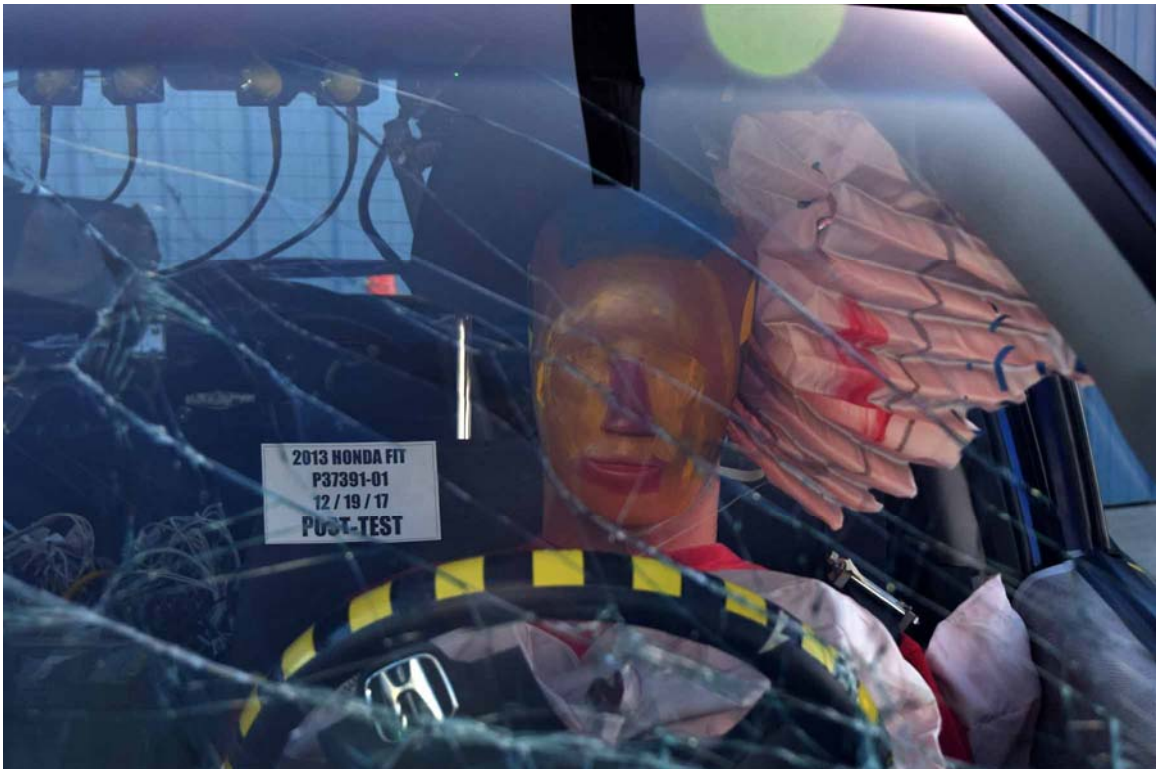


FIGURE 26. Post-Test Front View of Driver Dummy



FIGURE 27. Pre-Test Side View of Driver Dummy



FIGURE 28. Post-Test Side View of Driver Dummy



FIGURE 29. Pre-Test Driver Dummy and Vehicle Interior



FIGURE 30. Post-Test Driver Dummy and Vehicle Interior



FIGURE 31. Pre-Test Driver's Seat Fore-Aft Markings



FIGURE 32. Post-Test Driver's Seat Fore-Aft Markings



FIGURE 33. Pre-Test Driver Dummy Feet



FIGURE 34. Post-Test Driver Dummy Feet



FIGURE 35. Post-Test Driver Dummy Face



FIGURE 36. Post-Test Driver Dummy Contact with Airbag

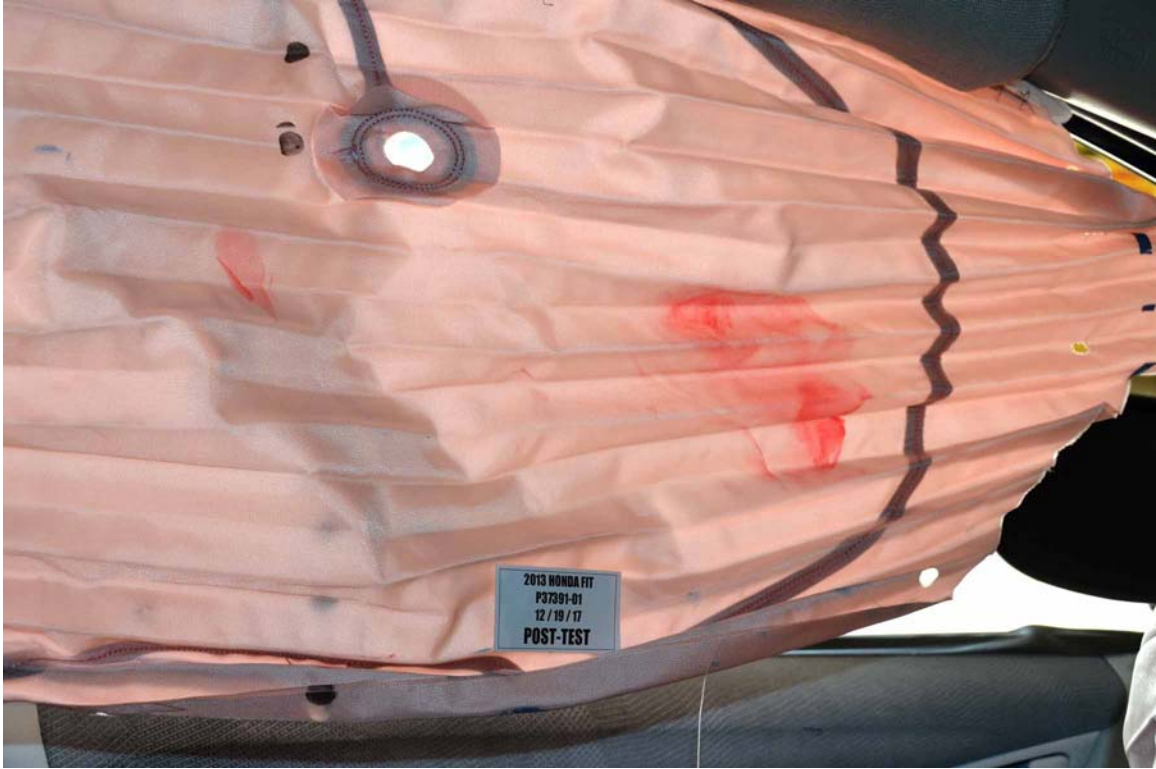


FIGURE 37. Post-Test Driver Dummy Contact with Curtain Airbag



FIGURE 38. Post-Test Driver Dummy Contact with Knee Bolster



FIGURE 39. Post-Test Driver Dummy Contact with Steering Column



FIGURE 40. Pre-Test Steering Column



FIGURE 41. Post-Test Steering Column



FIGURE 42. Pre-Test Front View of Passenger Dummy



FIGURE 43. Post-Test Front View of Passenger Dummy



FIGURE 44. Pre-Test Side View of Passenger Dummy



FIGURE 45. Post-Test Side View of Passenger Dummy



FIGURE 46. Pre-Test Passenger Dummy and Vehicle Interior



FIGURE 47. Post-Test Passenger Dummy and Vehicle Interior



FIGURE 48. Pre-Test Passenger's Seat Fore-Aft Markings



FIGURE 49. Post-Test Passenger's Seat Fore-Aft Markings



FIGURE 50. Pre-Test Passenger Dummy Feet



FIGURE 51. Post-Test Passenger Dummy Feet



FIGURE 52. Post-Test Passenger Dummy Face



FIGURE 53. Post-Test Passenger Dummy Contact with Airbag



FIGURE 54. Post-Test Passenger Dummy Contact with Knee Bolster



FIGURE 55. Pre-Test Equipment and Ballast

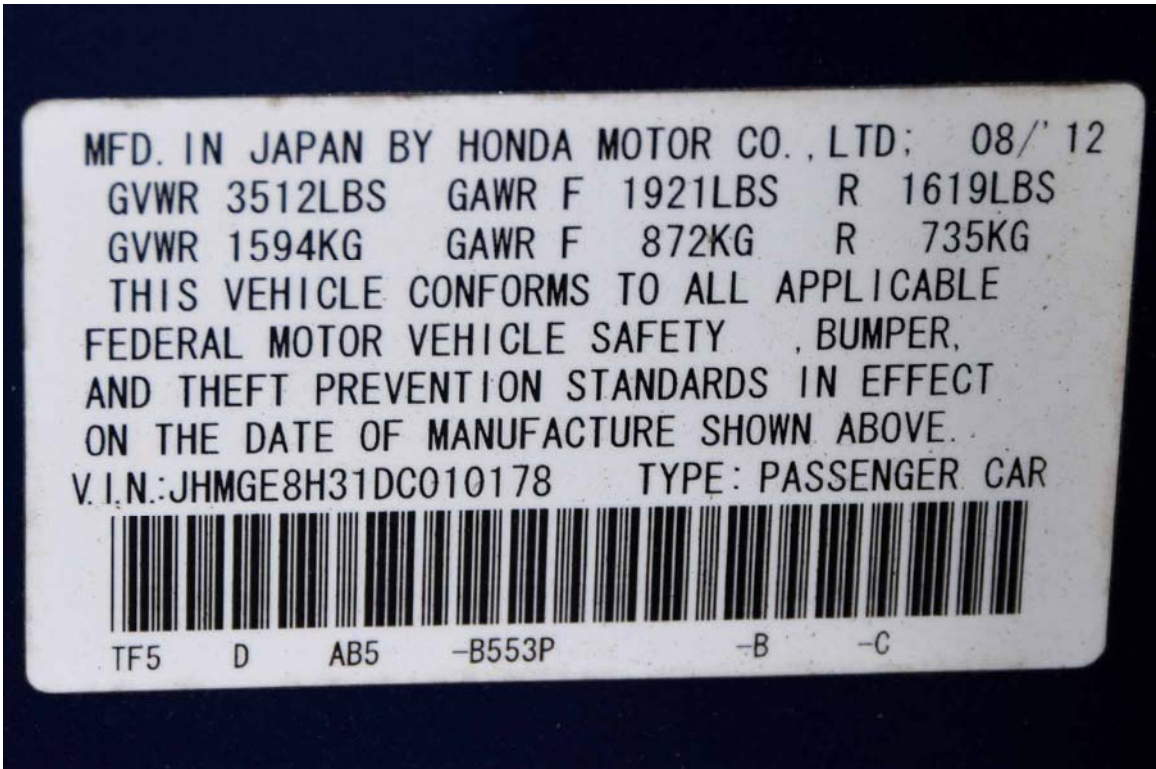


FIGURE 56. Manufacturer's Label



FIGURE 57. Tire Information Label



FIGURE 58. Impact Event

**APPENDIX B  
DATA PLOTS**

## TABLE OF DATA PLOTS

<u>Plot</u>		<u>Page</u>
1	Driver Head Acceleration X Primary	B-1
2	Driver Head Acceleration Y Primary	B-1
3	Driver Head Acceleration Z Primary	B-1
4	Driver Head Resultant Acceleration Primary	B-1
5	Driver Head Acceleration X Redundant	B-2
6	Driver Head Acceleration Y Redundant	B-2
7	Driver Head Acceleration Z Redundant	B-2
8	Driver Head Resultant Acceleration Redundant	B-2
9	Driver Upper Neck Force X	B-3
10	Driver Upper Neck Force Y	B-3
11	Driver Upper Neck Force Z	B-3
12	Driver Upper Neck Force Res.	B-3
13	Driver Upper Neck Moment X	B-4
14	Driver Upper Neck Moment Y	B-4
15	Driver Upper Neck Moment Z	B-4
16	Driver Upper Neck Moment Res.	B-4
17	Driver Chest Acceleration X Primary	B-5
18	Driver Chest Acceleration Y Primary	B-5
19	Driver Chest Acceleration Z Primary	B-5
20	Driver Chest Resultant Acceleration Primary	B-5
21	Driver Chest Acceleration X Redundant	B-6
22	Driver Chest Acceleration Y Redundant	B-6
23	Driver Chest Acceleration Z Redundant	B-6
24	Driver Chest Resultant Acceleration Redundant	B-6
25	Driver Pelvis Acceleration X	B-7
26	Driver Pelvis Acceleration Y	B-7
27	Driver Pelvis Acceleration Z	B-7
28	Driver Pelvis Acceleration Resultant	B-7
29	Driver Chest Deflection	B-8
30	Driver Head Rotation Rate X	B-8
31	Driver Head Rotation Rate Y	B-8
32	Driver Head Rotation Rate Z	B-8
33	Driver Left Femur Force Z	B-9
34	Driver Right Femur Force Z	B-9

## TABLE OF DATA PLOTS ... (CONTINUED)

Plot		Page
35	Driver Left Femur Force Z Redundant	B-9
36	Driver Right Femur Force Z Redundant	B-9
37	Driver Left Knee Deflection	B-10
38	Driver Right Knee Deflection	B-10
39	Driver Left Leg Upper Tibia Moment X	B-10
40	Driver Left Leg Upper Tibia Moment Y	B-10
41	Driver Left Leg Upper Tibia Force Z	B-11
42	Driver Left Leg Lower Tibia Moment X	B-11
43	Driver Left Leg Lower Tibia Moment Y	B-11
44	Driver Left Leg Lower Tibia Force Z	B-11
45	Driver Right Leg Upper Tibia Moment X	B-12
46	Driver Right Leg Upper Tibia Moment Y	B-12
47	Driver Right Leg Upper Tibia Force Z	B-12
48	Driver Right Leg Lower Tibia Moment X	B-12
49	Driver Right Leg Lower Tibia Moment Y	B-13
50	Driver Right Leg Lower Tibia Force Z	B-13
51	Driver Left Ankle Acceleration X	B-13
52	Driver Left Ankle Acceleration Z	B-13
53	Driver Left Toe Acceleration Z	B-14
54	Driver Right Ankle Acceleration X	B-14
55	Driver Right Ankle Acceleration Z	B-14
56	Driver Right Toe Acceleration Z	B-14
57	Driver Lap Belt Force	B-15
58	Driver Shoulder Belt Force	B-15
59	Passenger Head Acceleration X Primary	B-16
60	Passenger Head Acceleration Y Primary	B-16
61	Passenger Head Acceleration Z Primary	B-16
62	Passenger Head Resultant Acceleration Primary	B-16
63	Passenger Head Acceleration X Redundant	B-17
64	Passenger Head Acceleration Y Redundant	B-17
65	Passenger Head Acceleration Z Redundant	B-17
66	Passenger Head Resultant Acceleration Redundant	B-17
67	Passenger Upper Neck Force X	B-18
68	Passenger Upper Neck Force Y	B-18

**TABLE OF DATA PLOTS ... (CONTINUED)**

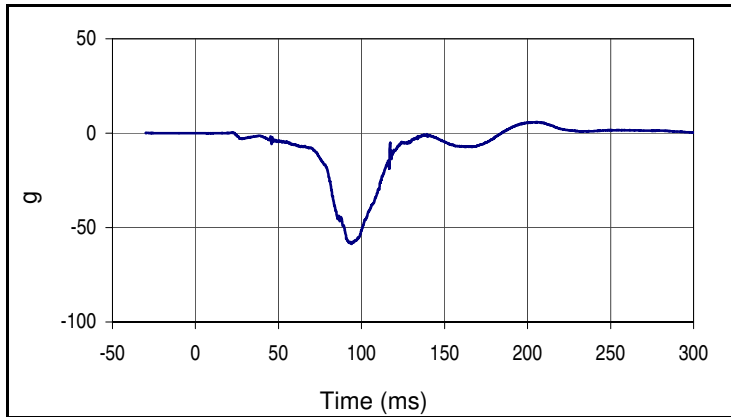
Plot		Page
69	Passenger Upper Neck Force Z	B-18
70	Passenger Upper Neck Force Res.	B-18
71	Passenger Upper Neck Moment X	B-19
72	Passenger Upper Neck Moment Y	B-19
73	Passenger Upper Neck Moment Z	B-19
74	Passenger Upper Neck Moment Res.	B-19
75	Passenger Chest Acceleration X Primary	B-20
76	Passenger Chest Acceleration Y Primary	B-20
77	Passenger Chest Acceleration Z Primary	B-20
78	Passenger Chest Resultant Acceleration Primary	B-20
79	Passenger Chest Acceleration X Redundant	B-21
80	Passenger Chest Acceleration Y Redundant	B-21
81	Passenger Chest Acceleration Z Redundant	B-21
82	Passenger Chest Resultant Acceleration Redundant	B-21
83	Passenger Pelvis Acceleration X	B-22
84	Passenger Pelvis Acceleration Y	B-22
85	Passenger Pelvis Acceleration Z	B-22
86	Passenger Pelvis Acceleration Resultant	B-22
87	Passenger Chest Deflection	B-23
88	Passenger Head Rotation Rate X	B-23
89	Passenger Head Rotation Rate Y	B-23
90	Passenger Head Rotation Rate Z	B-23
91	Passenger Left Femur Force Z	B-24
92	Passenger Right Femur Force Z	B-24
93	Passenger Left Femur Force Z Redundant	B-24
94	Passenger Right Femur Force Z Redundant	B-24
95	Passenger Left Knee Deflection	B-25
96	Passenger Right Knee Deflection	B-25
97	Passenger Left Leg Upper Tibia Moment X	B-25
98	Passenger Left Leg Upper Tibia Moment Y	B-25
99	Passenger Left Leg Upper Tibia Force Z	B-26
100	Passenger Left Leg Lower Tibia Moment X	B-26
101	Passenger Left Leg Lower Tibia Moment Y	B-26
102	Passenger Left Leg Lower Tibia Force Z	B-26

## TABLE OF DATA PLOTS ... (CONTINUED)

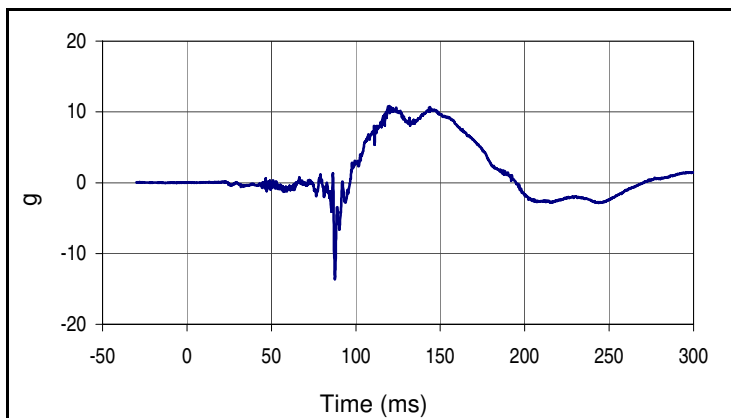
<u>Plot</u>		<u>Page</u>
103	Passenger Right Leg Upper Tibia Moment X	B-27
104	Passenger Right Leg Upper Tibia Moment Y	B-27
105	Passenger Right Leg Upper Tibia Force Z	B-27
106	Passenger Right Leg Lower Tibia Moment X	B-27
107	Passenger Right Leg Lower Tibia Moment Y	B-28
108	Passenger Right Leg Lower Tibia Force Z	B-28
109	Passenger Left Ankle Acceleration X	B-28
110	Passenger Left Ankle Acceleration Z	B-28
111	Passenger Left Toe Acceleration Z	B-29
112	Passenger Right Ankle Acceleration X	B-29
113	Passenger Right Ankle Acceleration Z	B-29
114	Passenger Right Toe Acceleration Z	B-29
115	Passenger Lap Belt Force	B-30
116	Passenger Shoulder Belt Force	B-30
117	Vehicle CG – X	B-31
118	Vehicle CG – Y	B-31
119	Vehicle CG – Z	B-31
120	Vehicle Roof Rail – X	B-31
121	Vehicle Roof Rail – Y	B-32
122	Vehicle Roof Rail – Z	B-32
123	Vehicle Bottom Frame Rail – X	B-32
124	Vehicle Bottom Frame Rail – Y	B-32
125	Vehicle Bottom Frame Rail – Z	B-33
126	Vehicle Seat Frame – X	B-33
127	Vehicle Seat Frame – Y	B-33
128	Vehicle Seat Frame – Z	B-33

Test Vehicle: 2013 Honda Fit 5-Door Hatchback  
 Test Program: 64.4 km/h 40% Moderate Overlap Frontal Impact

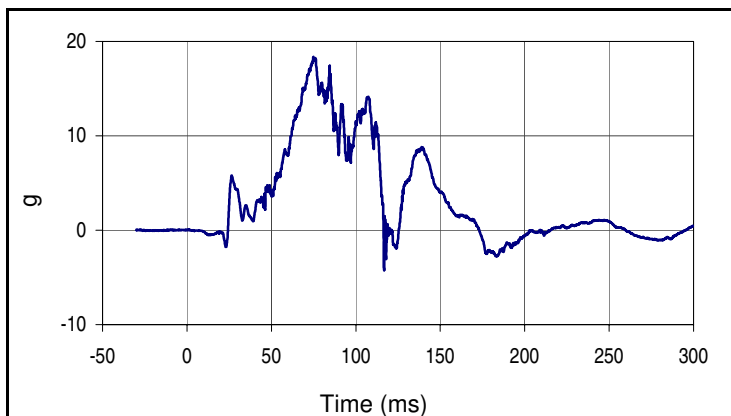
Project No.: P37391-01  
 Test Date: 12/19/17



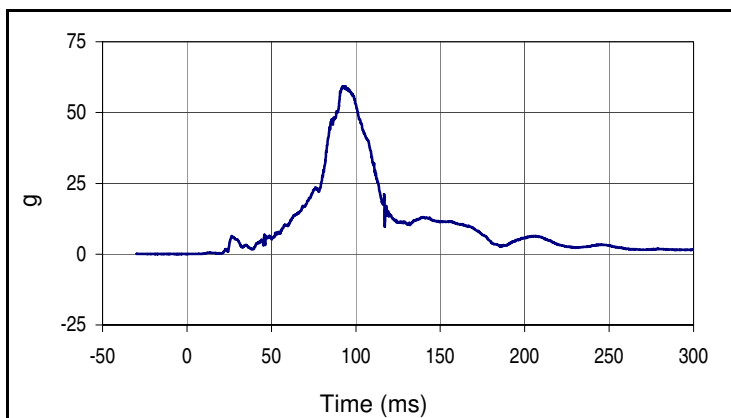
Curve Description			
Driver Head Acceleration X Primary			
Plot No.		SAE Class	Units
001		1000	g
Max	Time	Min	Time
5.9	205.1	-58.6	94.0



Curve Description			
Driver Head Acceleration Y Primary			
Plot No.		SAE Class	Units
002		1000	g
Max	Time	Min	Time
10.8	119.7	-13.6	87.6



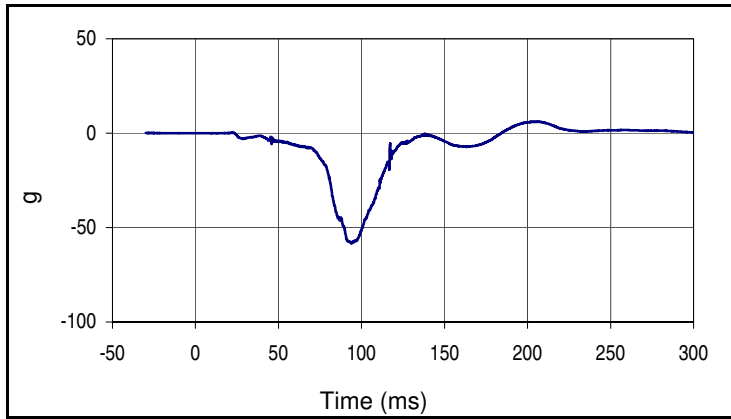
Curve Description			
Driver Head Acceleration Z Primary			
Plot No.		SAE Class	Units
003		1000	g
Max	Time	Min	Time
18.4	74.8	-4.2	116.7



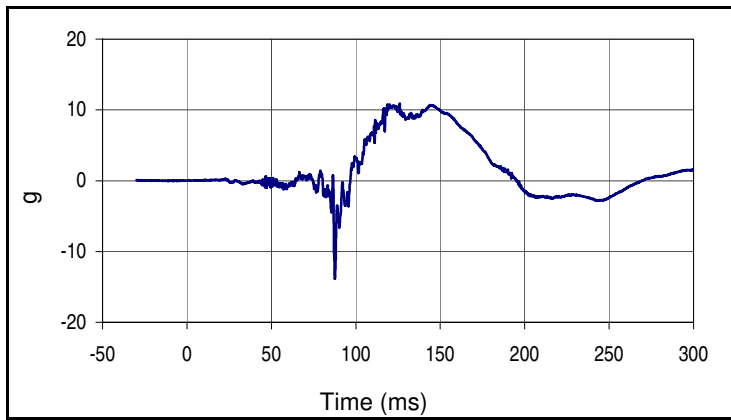
Curve Description			
Driver Head Resultant Acceleration Primary			
Plot No.		SAE Class	Units
004		1000	g
Max	Time	Min	Time
59.3	92.2	0.0	0.3

Test Vehicle: 2013 Honda Fit 5-Door Hatchback  
 Test Program: 64.4 km/h 40% Moderate Overlap Frontal Impact

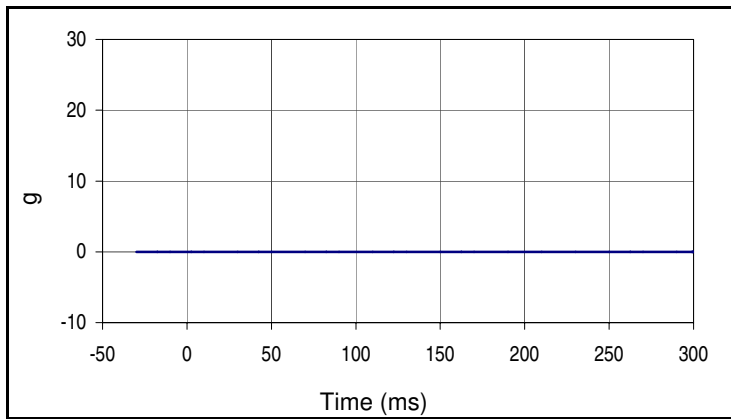
Project No.: P37391-01  
 Test Date: 12/19/17



Curve Description			
Driver Head Acceleration X Redundant			
Plot No.		SAE Class	Units
005		1000	g
Max	Time	Min	Time
6.2	205.0	-58.5	94.0

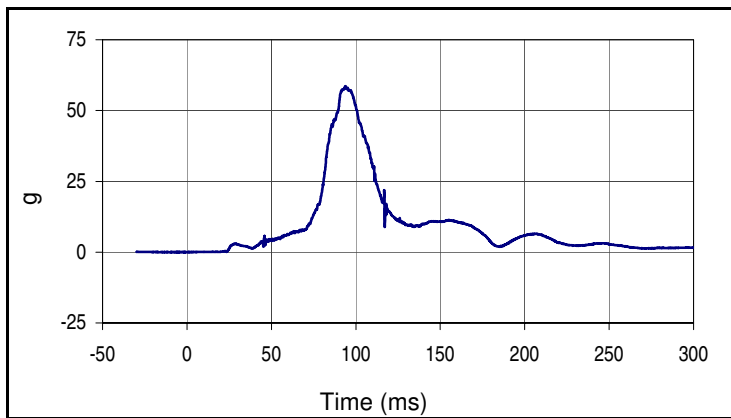


Curve Description			
Driver Head Acceleration Y Redundant			
Plot No.		SAE Class	Units
006		1000	g
Max	Time	Min	Time
10.8	126.0	-13.8	87.6



Curve Description			
Driver Head Acceleration Z Redundant			
Plot No.		SAE Class	Units
007		1000	g
Max	Time	Min	Time
0.0	0.0	0.0	0.0

Channel failed, no data

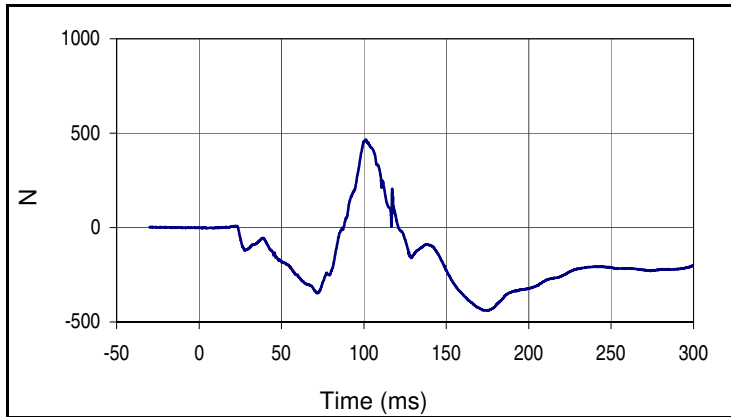


Curve Description			
Driver Head Resultant Acceleration Redundant			
Plot No.		SAE Class	Units
008		1000	g
Max	Time	Min	Time
58.6	94.0	0.0	2.2

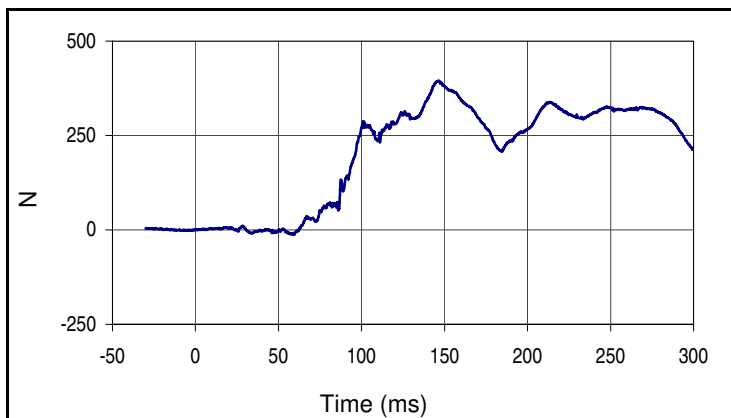
Head Z failed, no data

Test Vehicle: 2013 Honda Fit 5-Door Hatchback  
 Test Program: 64.4 km/h 40% Moderate Overlap Frontal Impact

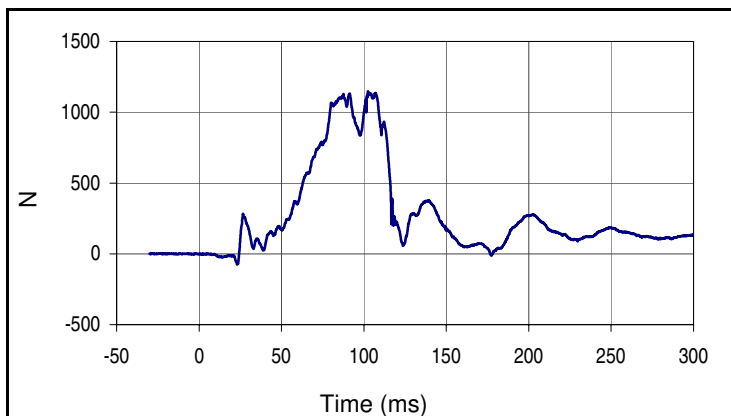
Project No.: P37391-01  
 Test Date: 12/19/17



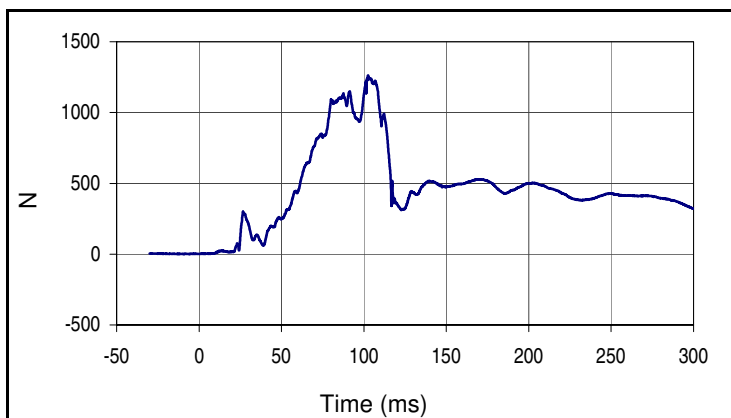
Curve Description			
Driver Upper Neck Force X			
Plot No.		SAE Class	Units
009		1000	N
Max	Time	Min	Time
465.7	101.4	-439.9	175.3



Curve Description			
Driver Upper Neck Force Y			
Plot No.		SAE Class	Units
010		1000	N
Max	Time	Min	Time
394.9	146.0	-12.7	58.5



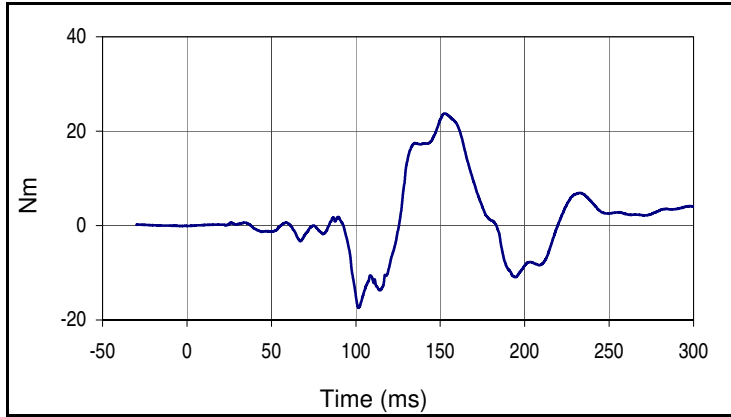
Curve Description			
Driver Upper Neck Force Z			
Plot No.		SAE Class	Units
011		1000	N
Max	Time	Min	Time
1147.1	102.5	-75.2	23.1



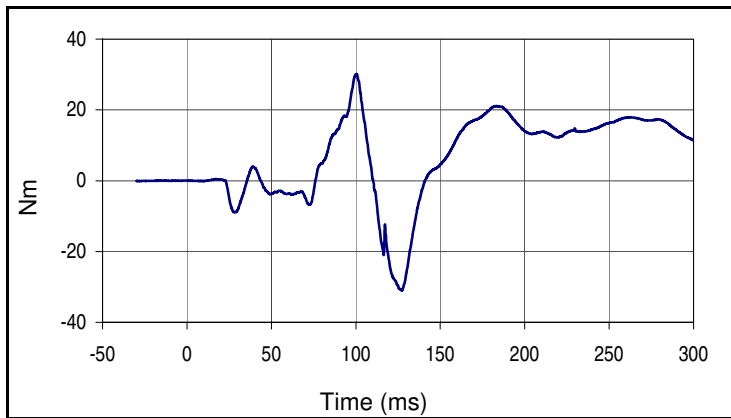
Curve Description			
Driver Upper Neck Force Res.			
Plot No.		SAE Class	Units
012		1000	N
Max	Time	Min	Time
1261.7	102.5	0.8	2.8

Test Vehicle: 2013 Honda Fit 5-Door Hatchback  
 Test Program: 64.4 km/h 40% Moderate Overlap Frontal Impact

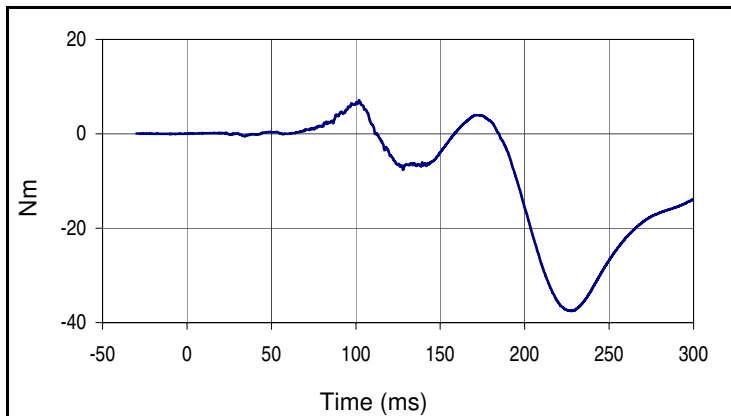
Project No.: P37391-01  
 Test Date: 12/19/17



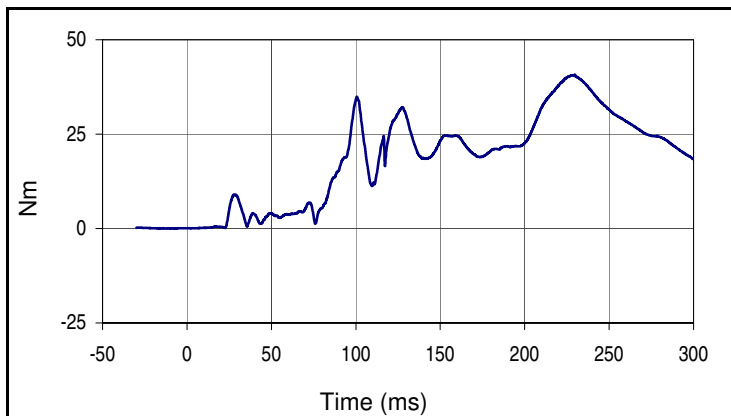
Curve Description			
Driver Upper Neck Moment X			
Plot No.		SAE Class	Units
013		600	Nm
Max	Time	Min	Time
23.7	152.8	-17.4	101.6



Curve Description			
Driver Upper Neck Moment Y			
Plot No.		SAE Class	Units
014		600	Nm
Max	Time	Min	Time
30.2	100.5	-31.1	127.1



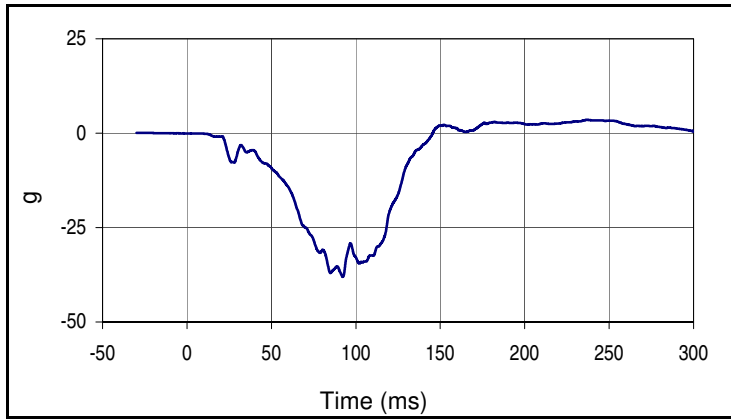
Curve Description			
Driver Upper Neck Moment Z			
Plot No.		SAE Class	Units
015		600	Nm
Max	Time	Min	Time
7.1	101.8	-37.5	227.7



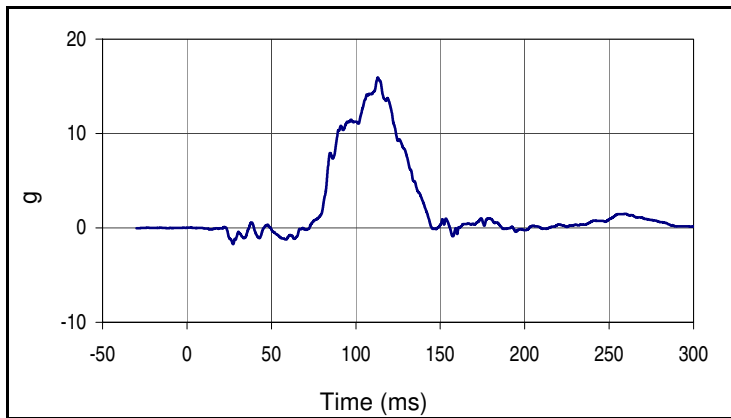
Curve Description			
Driver Upper Neck Moment Res.			
Plot No.		SAE Class	Units
016		600	Nm
Max	Time	Min	Time
40.8	229.7	0.0	3.6

Test Vehicle: 2013 Honda Fit 5-Door Hatchback  
 Test Program: 64.4 km/h 40% Moderate Overlap Frontal Impact

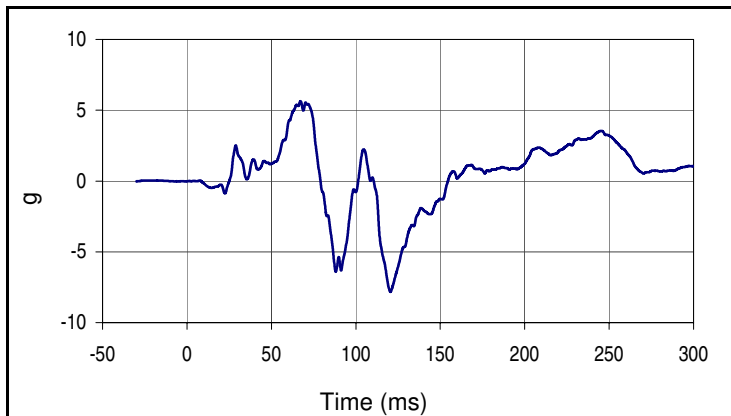
Project No.: P37391-01  
 Test Date: 12/19/17



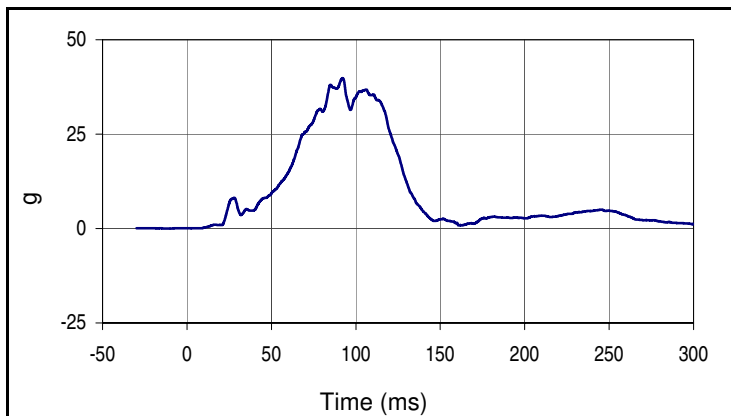
Curve Description			
Driver Chest Acceleration X Primary			
Plot No.		SAE Class	Units
017		180	g
Max	Time	Min	Time
3.5	237.0	-38.0	92.3



Curve Description			
Driver Chest Acceleration Y Primary			
Plot No.		SAE Class	Units
018		180	g
Max	Time	Min	Time
15.9	113.0	-1.7	27.3



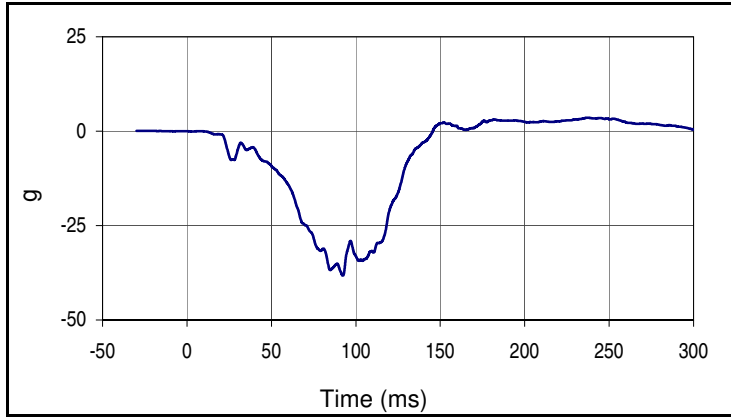
Curve Description			
Driver Chest Acceleration Z Primary			
Plot No.		SAE Class	Units
019		180	g
Max	Time	Min	Time
5.6	67.2	-7.8	120.5



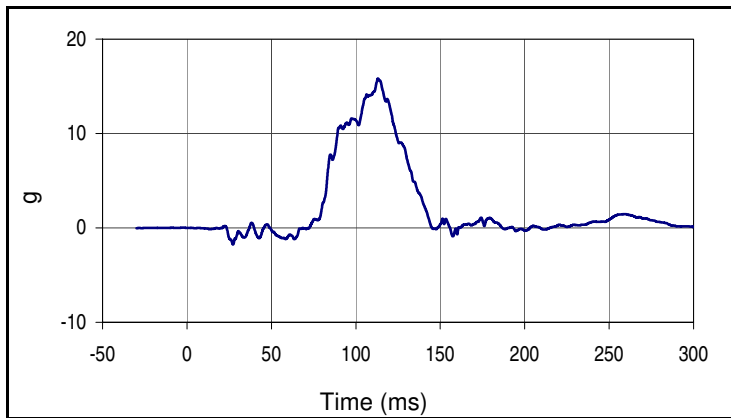
Curve Description			
Driver Chest Resultant Acceleration Primary			
Plot No.		SAE Class	Units
020		180	g
Max	Time	Min	Time
39.8	92.2	0.1	2.7

Test Vehicle: 2013 Honda Fit 5-Door Hatchback  
 Test Program: 64.4 km/h 40% Moderate Overlap Frontal Impact

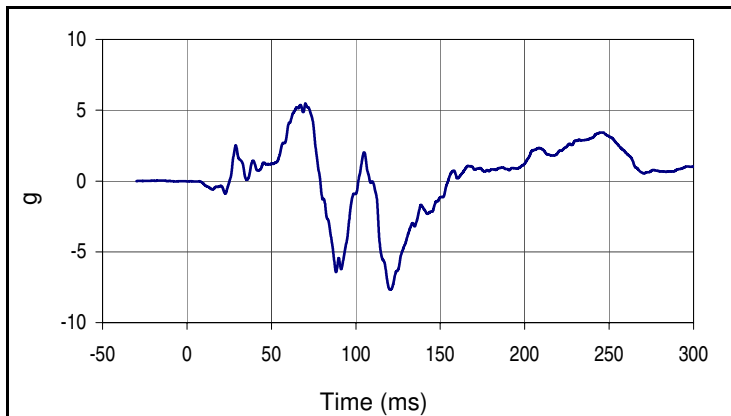
Project No.: P37391-01  
 Test Date: 12/19/17



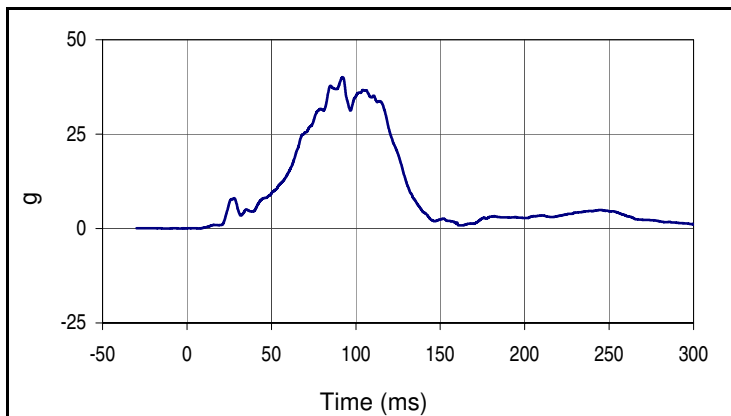
Curve Description			
Driver Chest Acceleration X Redundant			
Plot No.		SAE Class	Units
021		180	g
Max	Time	Min	Time
3.5	237.8	-38.3	92.3



Curve Description			
Driver Chest Acceleration Y Redundant			
Plot No.		SAE Class	Units
022		180	g
Max	Time	Min	Time
15.8	113.2	-1.7	27.3



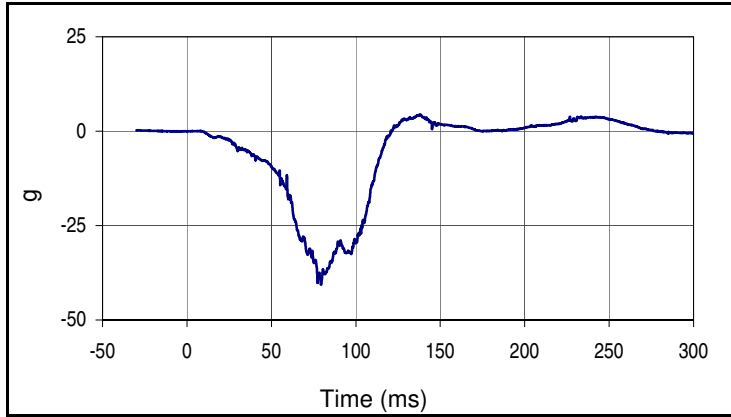
Curve Description			
Driver Chest Acceleration Z Redundant			
Plot No.		SAE Class	Units
023		180	g
Max	Time	Min	Time
5.5	70.2	-7.7	120.3



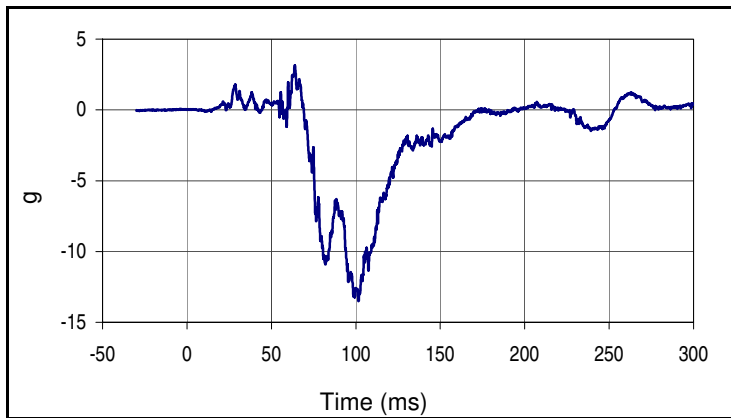
Curve Description			
Driver Chest Resultant Acceleration Redundant			
Plot No.		SAE Class	Units
024		180	g
Max	Time	Min	Time
40.1	92.2	0.0	7.5

Test Vehicle: 2013 Honda Fit 5-Door Hatchback  
 Test Program: 64.4 km/h 40% Moderate Overlap Frontal Impact

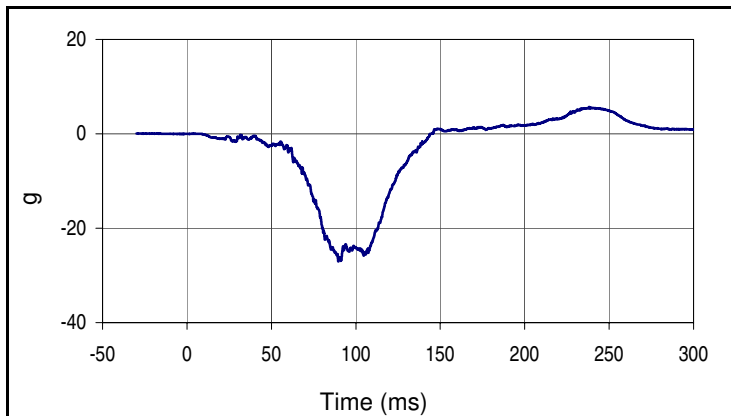
Project No.: P37391-01  
 Test Date: 12/19/17



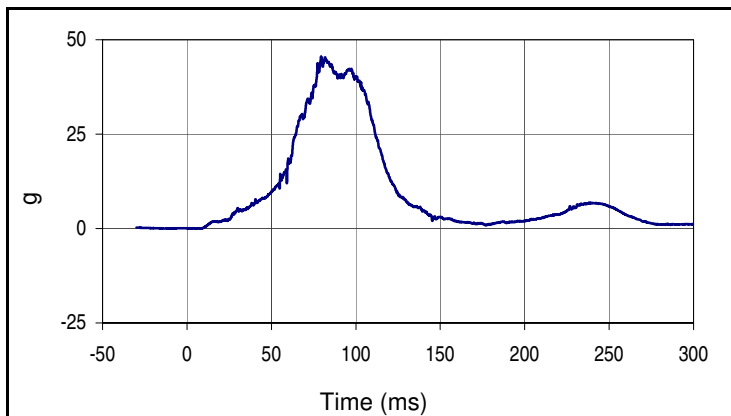
Curve Description			
Driver Pelvis Acceleration X			
Plot No.		SAE Class	Units
025		1000	g
Max	Time	Min	Time
4.4	138.0	-40.7	79.4



Curve Description			
Driver Pelvis Acceleration Y			
Plot No.		SAE Class	Units
026		1000	g
Max	Time	Min	Time
3.2	63.8	-13.5	101.6



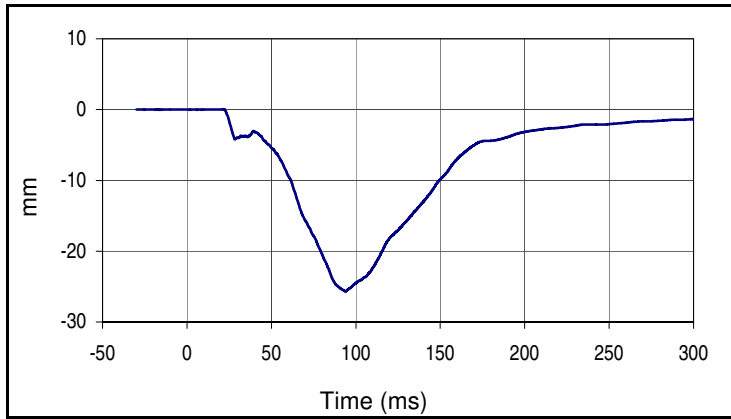
Curve Description			
Driver Pelvis Acceleration Z			
Plot No.		SAE Class	Units
027		1000	g
Max	Time	Min	Time
5.7	238.1	-27.0	89.6



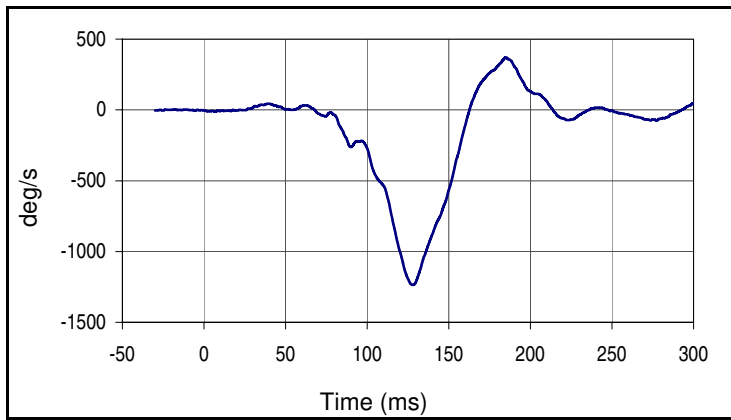
Curve Description			
Driver Pelvis Acceleration Resultant			
Plot No.		SAE Class	Units
028		1000	g
Max	Time	Min	Time
45.5	79.5	0.0	5.5

Test Vehicle: 2013 Honda Fit 5-Door Hatchback  
 Test Program: 64.4 km/h 40% Moderate Overlap Frontal Impact

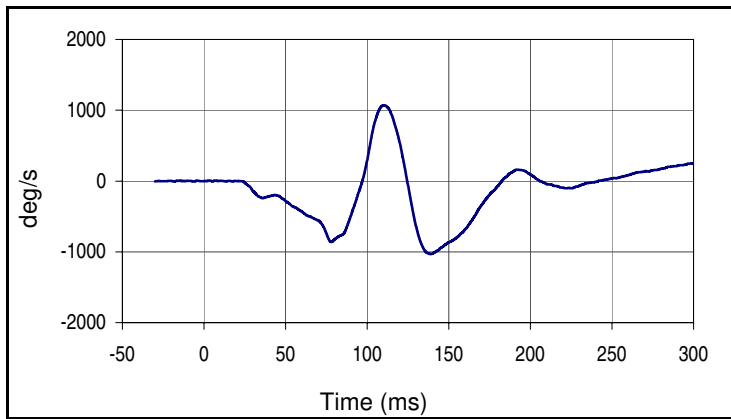
Project No.: P37391-01  
 Test Date: 12/19/17



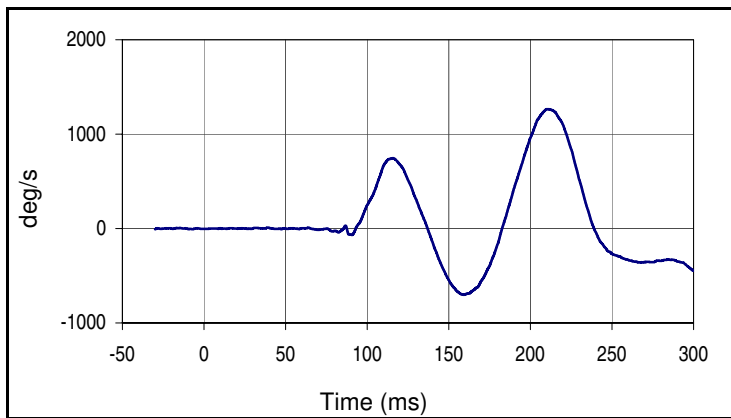
Curve Description			
Driver Chest Deflection			
Plot No.		SAE Class	Units
029		600	mm
Max	Time	Min	Time
0.0	21.3	-25.7	93.9



Curve Description			
Driver Head Rotation Rate X			
Plot No.		SAE Class	Units
030		180	deg/s
Max	Time	Min	Time
371.5	184.9	-1235.5	127.8



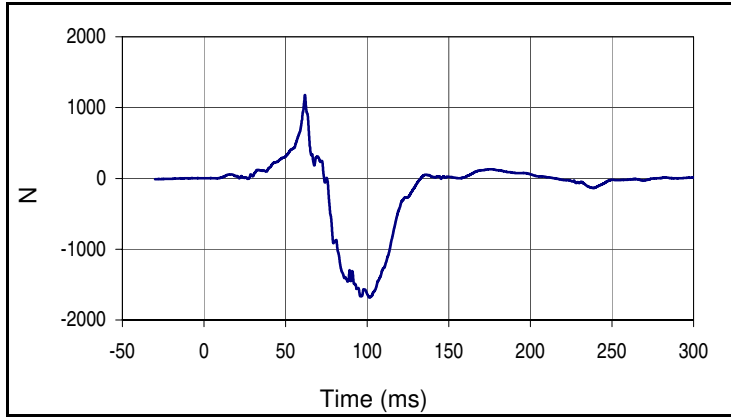
Curve Description			
Driver Head Rotation Rate Y			
Plot No.		SAE Class	Units
031		180	deg/s
Max	Time	Min	Time
1070.3	110.4	-1030.8	138.8



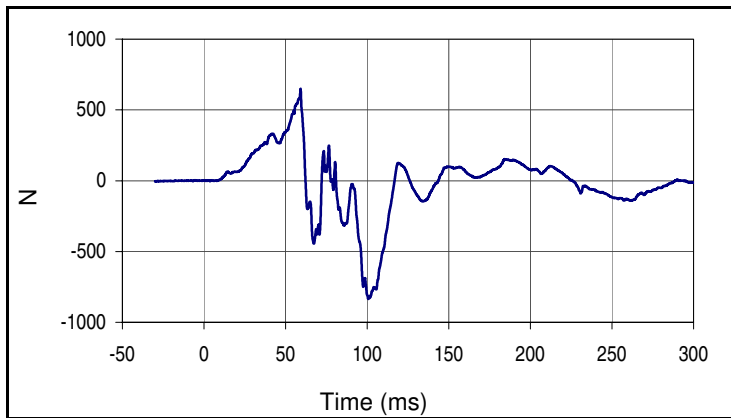
Curve Description			
Driver Head Rotation Rate Z			
Plot No.		SAE Class	Units
032		180	deg/s
Max	Time	Min	Time
1265.5	210.6	-701.5	159.4

Test Vehicle: 2013 Honda Fit 5-Door Hatchback  
 Test Program: 64.4 km/h 40% Moderate Overlap Frontal Impact

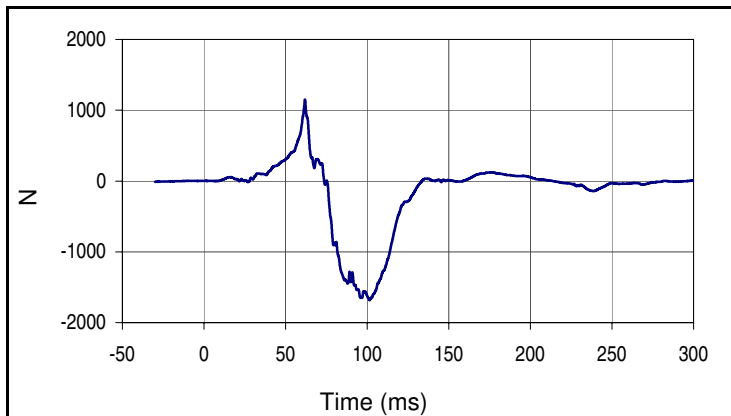
Project No.: P37391-01  
 Test Date: 12/19/17



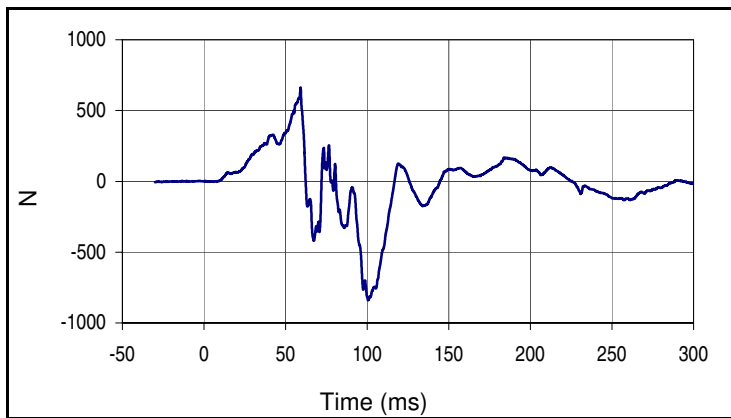
Curve Description			
Driver Left Femur Force Z			
Plot No.		SAE Class	Units
033		600	N
Max	Time	Min	Time
1178.6	61.9	-1685.4	101.4



Curve Description			
Driver Right Femur Force Z			
Plot No.		SAE Class	Units
034		600	N
Max	Time	Min	Time
649.3	59.2	-834.2	100.6



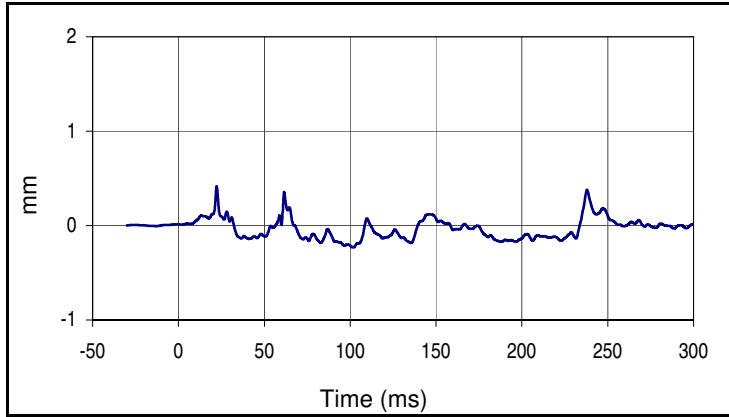
Curve Description			
Driver Left Femur Force Z Redundant			
Plot No.		SAE Class	Units
035		600	N
Max	Time	Min	Time
1151.2	61.9	-1682.5	101.4



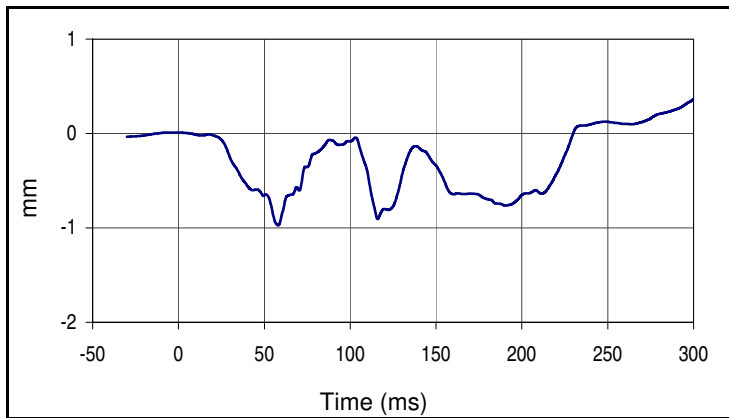
Curve Description			
Driver Right Femur Force Z Redundant			
Plot No.		SAE Class	Units
036		600	N
Max	Time	Min	Time
664.2	59.2	-838.6	100.5

Test Vehicle: 2013 Honda Fit 5-Door Hatchback  
 Test Program: 64.4 km/h 40% Moderate Overlap Frontal Impact

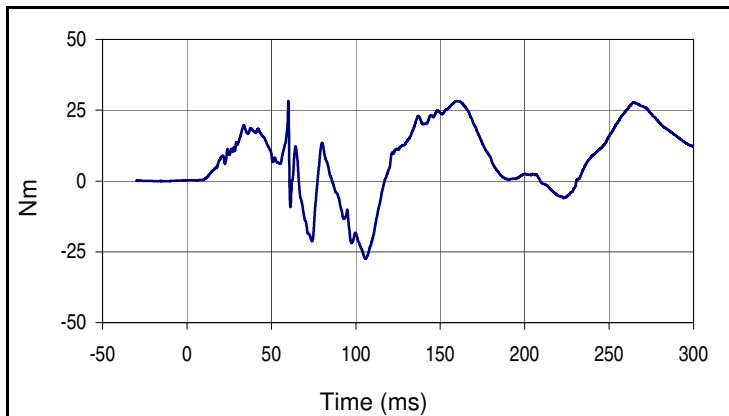
Project No.: P37391-01  
 Test Date: 12/19/17



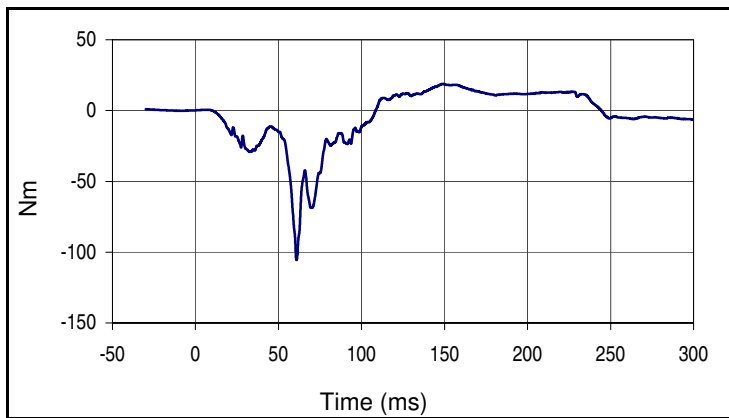
Curve Description			
Driver Left Knee Deflection			
Plot No.		SAE Class	Units
037		180	mm
Max	Time	Min	Time
0.4	22.2	-0.2	101.7



Curve Description			
Driver Right Knee Deflection			
Plot No.		SAE Class	Units
038		180	mm
Max	Time	Min	Time
0.4	299.9	-1.0	58.1



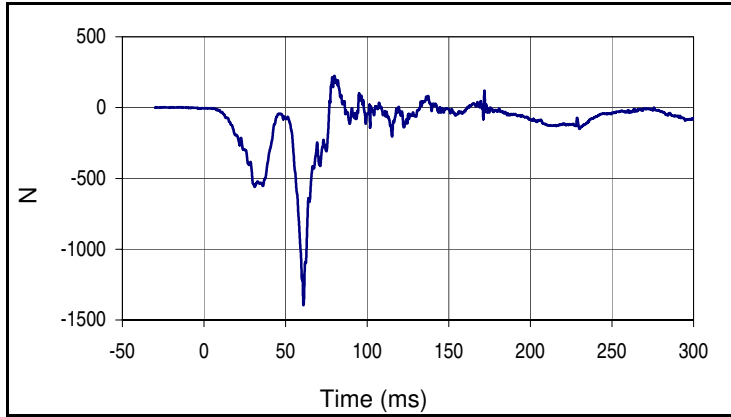
Curve Description			
Driver Left Leg Upper Tibia Moment X			
Plot No.		SAE Class	Units
039		600	Nm
Max	Time	Min	Time
28.3	60.1	-27.5	105.7



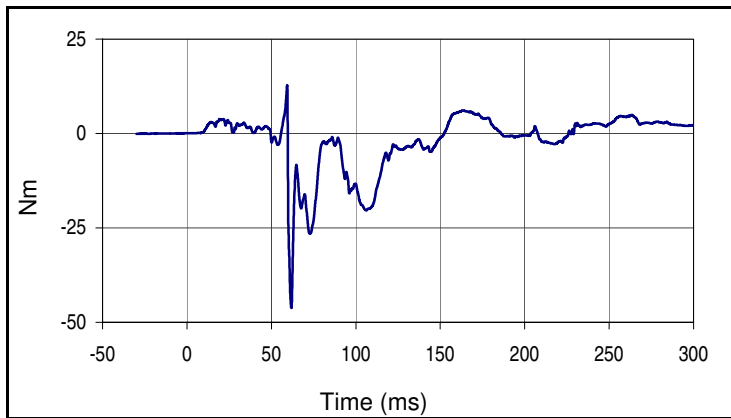
Curve Description			
Driver Left Leg Upper Tibia Moment Y			
Plot No.		SAE Class	Units
040		600	Nm
Max	Time	Min	Time
18.8	149.1	-105.5	60.8

Test Vehicle: 2013 Honda Fit 5-Door Hatchback  
 Test Program: 64.4 km/h 40% Moderate Overlap Frontal Impact

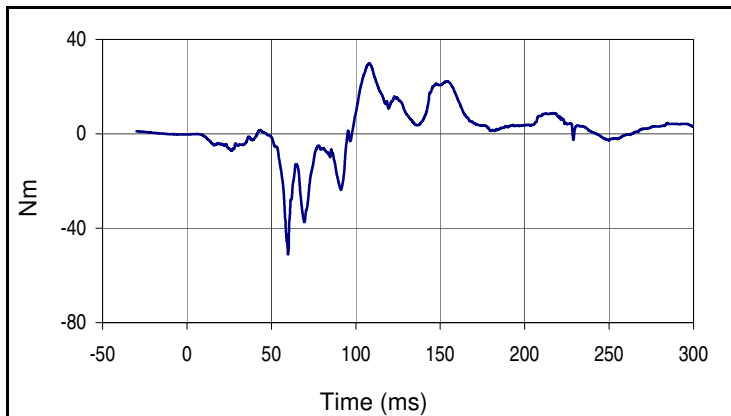
Project No.: P37391-01  
 Test Date: 12/19/17



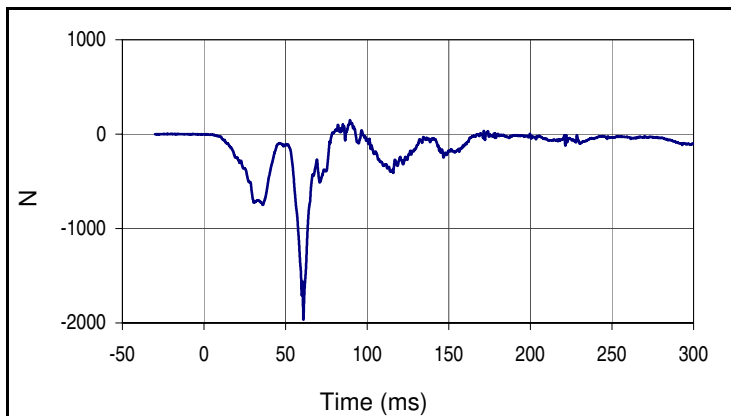
Curve Description			
Driver Left Leg Upper Tibia Force Z			
Plot No.		SAE Class	Units
041		600	N
Max	Time	Min	Time
223.5	80.0	-1395.5	60.9



Curve Description			
Driver Left Leg Lower Tibia Moment X			
Plot No.		SAE Class	Units
042		600	Nm
Max	Time	Min	Time
12.7	59.3	-46.2	61.8



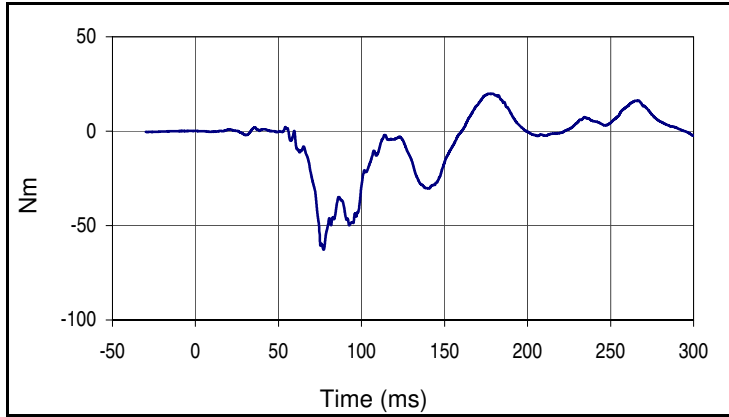
Curve Description			
Driver Left Leg Lower Tibia Moment Y			
Plot No.		SAE Class	Units
043		600	Nm
Max	Time	Min	Time
29.9	108.0	-51.2	59.9



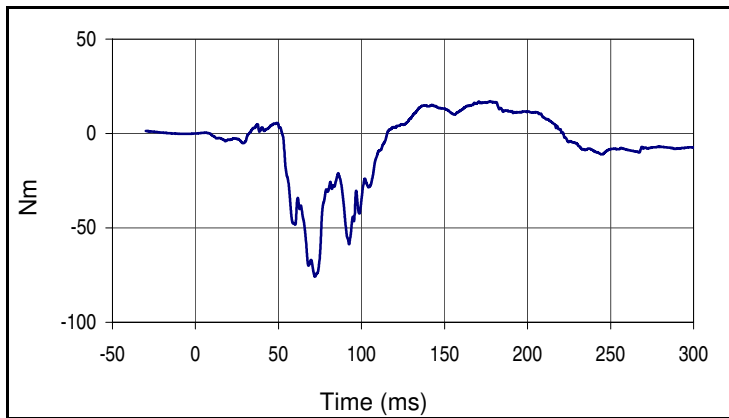
Curve Description			
Driver Left Leg Lower Tibia Force Z			
Plot No.		SAE Class	Units
044		600	N
Max	Time	Min	Time
150.1	89.5	-1967.1	60.9

Test Vehicle: 2013 Honda Fit 5-Door Hatchback  
 Test Program: 64.4 km/h 40% Moderate Overlap Frontal Impact

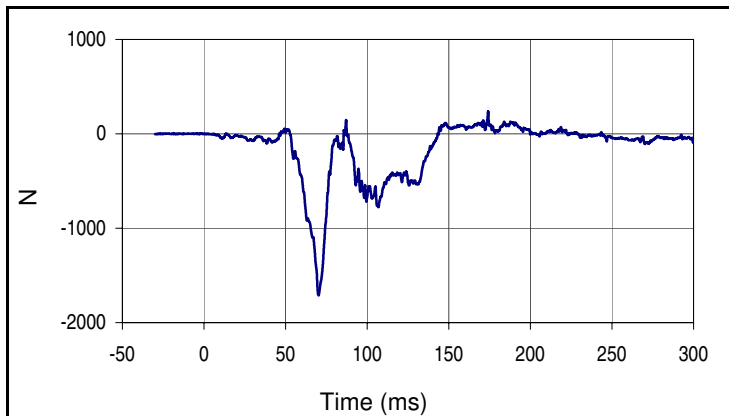
Project No.: P37391-01  
 Test Date: 12/19/17



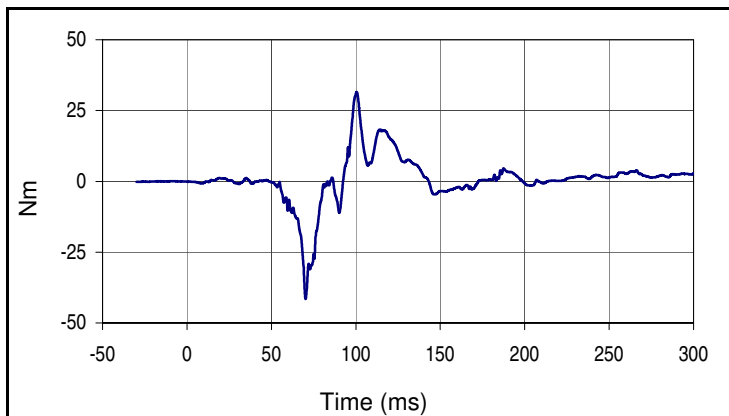
Curve Description			
Driver Right Leg Upper Tibia Moment X			
Plot No.		SAE Class	Units
045		600	Nm
Max	Time	Min	Time
19.9	178.7	-62.6	77.2



Curve Description			
Driver Right Leg Upper Tibia Moment Y			
Plot No.		SAE Class	Units
046		600	Nm
Max	Time	Min	Time
17.2	177.6	-75.7	72.0



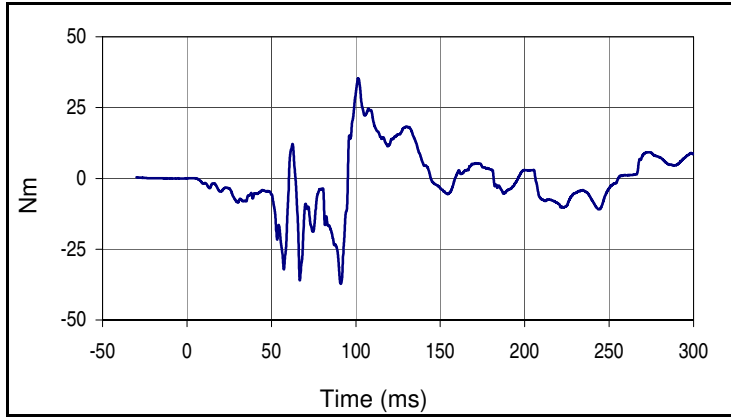
Curve Description			
Driver Right Leg Upper Tibia Force Z			
Plot No.		SAE Class	Units
047		600	N
Max	Time	Min	Time
236.1	174.2	-1711.9	70.2



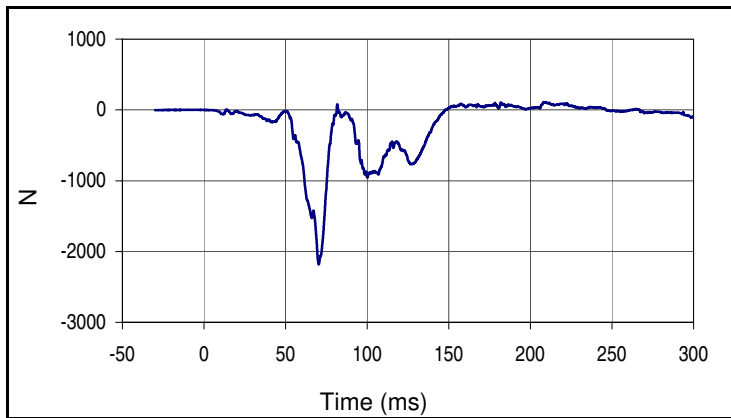
Curve Description			
Driver Right Leg Lower Tibia Moment X			
Plot No.		SAE Class	Units
048		600	Nm
Max	Time	Min	Time
31.5	100.5	-41.5	70.3

Test Vehicle: 2013 Honda Fit 5-Door Hatchback  
 Test Program: 64.4 km/h 40% Moderate Overlap Frontal Impact

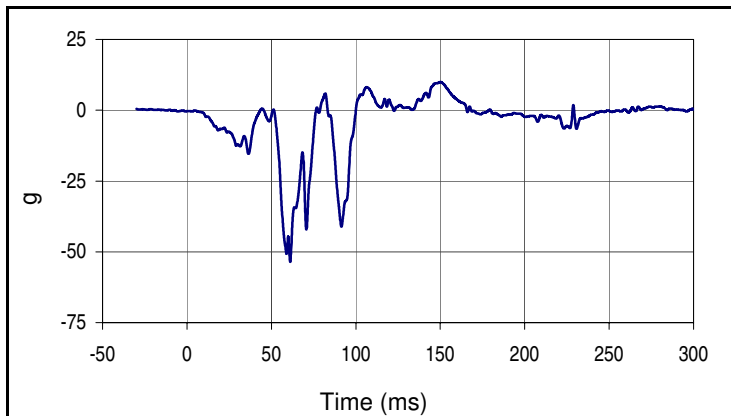
Project No.: P37391-01  
 Test Date: 12/19/17



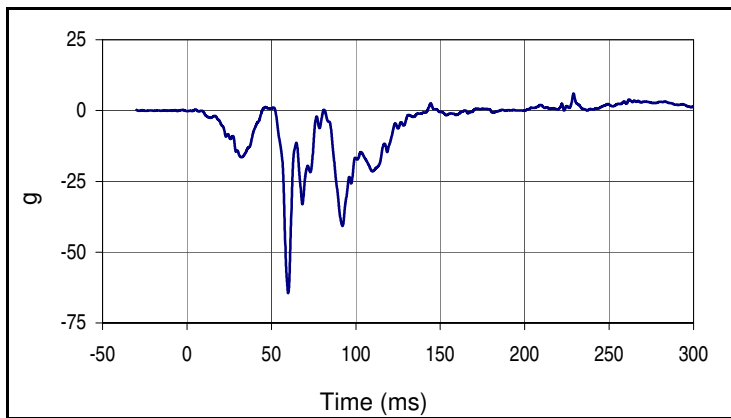
Curve Description			
Driver Right Leg Lower Tibia Moment Y			
Plot No.		SAE Class	Units
049		600	Nm
Max	Time	Min	Time
35.3	101.4	-37.3	91.1



Curve Description			
Driver Right Leg Lower Tibia Force Z			
Plot No.		SAE Class	Units
050		600	N
Max	Time	Min	Time
110.6	208.7	-2180.2	70.3



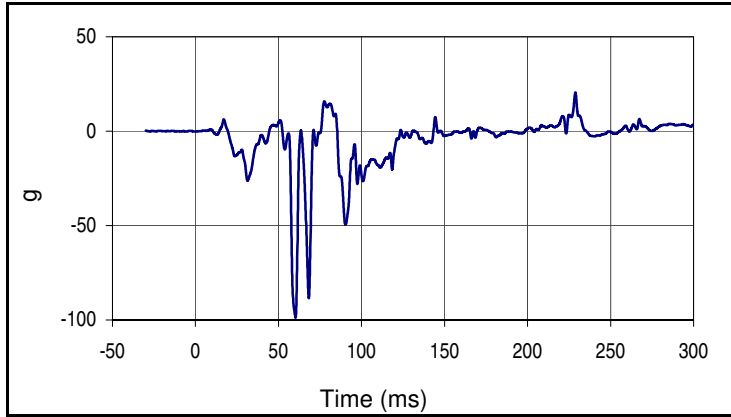
Curve Description			
Driver Left Ankle Acceleration X			
Plot No.		SAE Class	Units
051		180	g
Max	Time	Min	Time
9.9	150.3	-53.5	61.1



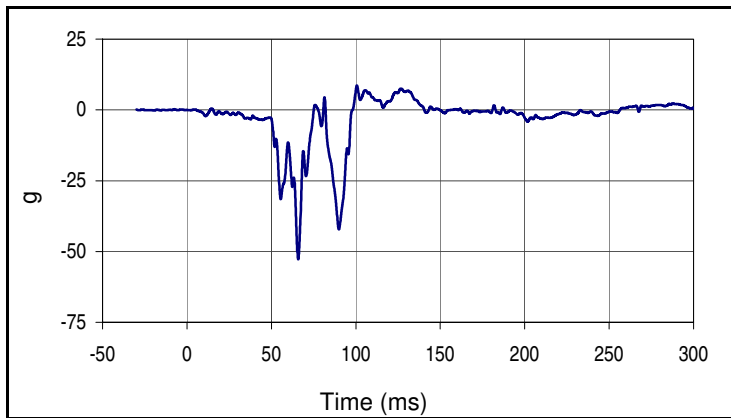
Curve Description			
Driver Left Ankle Acceleration Z			
Plot No.		SAE Class	Units
052		180	g
Max	Time	Min	Time
6.0	229.0	-64.5	59.9

Test Vehicle: 2013 Honda Fit 5-Door Hatchback  
 Test Program: 64.4 km/h 40% Moderate Overlap Frontal Impact

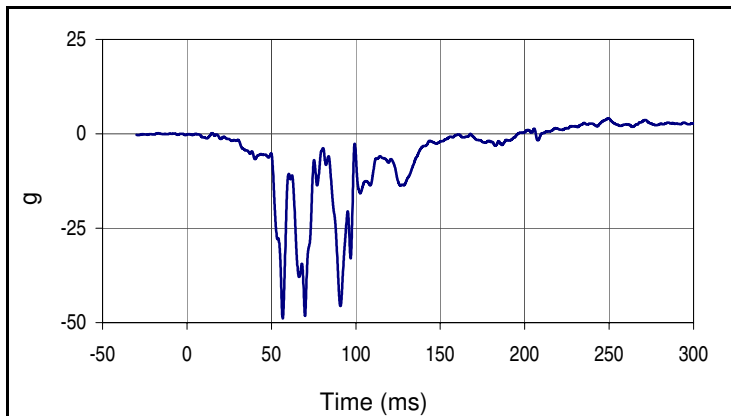
Project No.: P37391-01  
 Test Date: 12/19/17



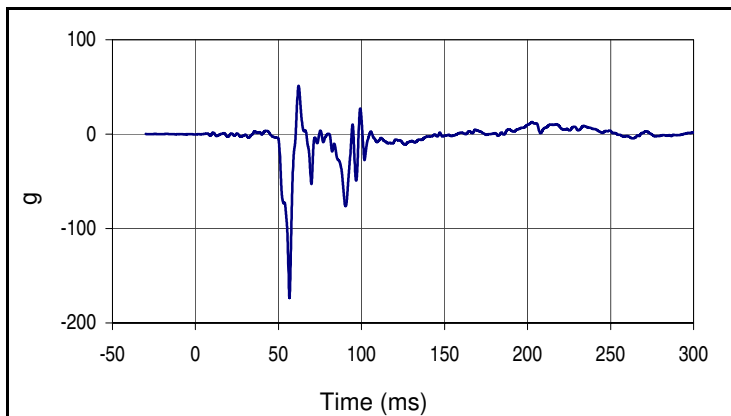
Curve Description			
Driver Left Toe Acceleration Z			
Plot No.		SAE Class	Units
053		180	g
Max	Time	Min	Time
20.6	228.8	-98.6	60.3



Curve Description			
Driver Right Ankle Acceleration X			
Plot No.		SAE Class	Units
054		180	g
Max	Time	Min	Time
8.6	100.6	-52.7	65.9



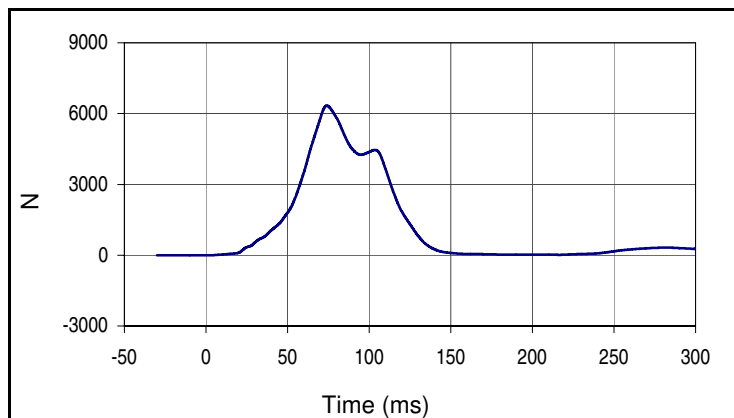
Curve Description			
Driver Right Ankle Acceleration Z			
Plot No.		SAE Class	Units
055		180	g
Max	Time	Min	Time
4.1	249.6	-48.9	56.7



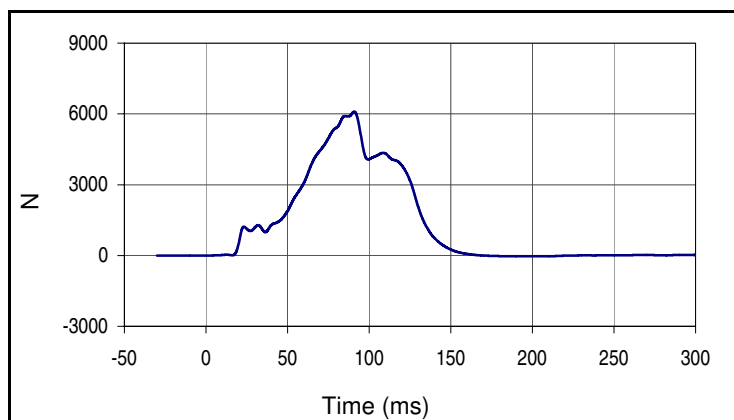
Curve Description			
Driver Right Toe Acceleration Z			
Plot No.		SAE Class	Units
056		180	g
Max	Time	Min	Time
51.1	62.1	-173.6	56.6

Test Vehicle: 2013 Honda Fit 5-Door Hatchback  
 Test Program: 64.4 km/h 40% Moderate Overlap Frontal Impact

Project No.: P37391-01  
 Test Date: 12/19/17



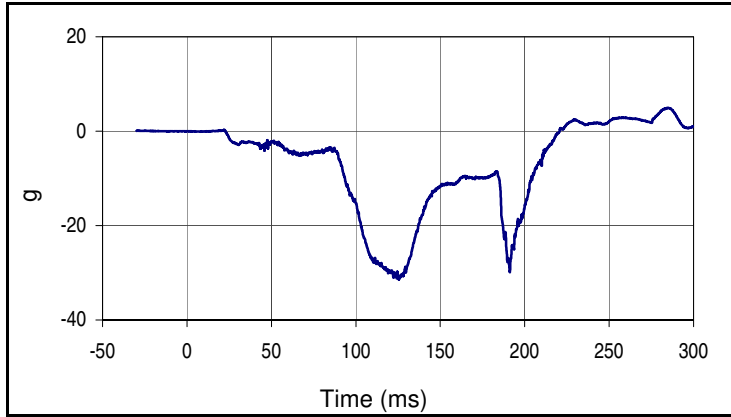
Curve Description			
Driver Lap Belt Force			
Plot No.		SAE Class	Units
057		60	N
Max	Time	Min	Time
6337.7	74.1	-1.7	2.3



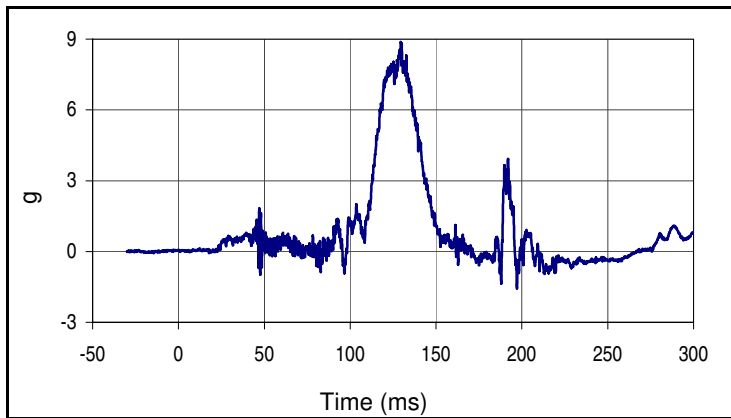
Curve Description			
Driver Shoulder Belt Force			
Plot No.		SAE Class	Units
058		60	N
Max	Time	Min	Time
6093.3	90.9	-35.4	203.8

Test Vehicle: 2013 Honda Fit 5-Door Hatchback  
 Test Program: 64.4 km/h 40% Moderate Overlap Frontal Impact

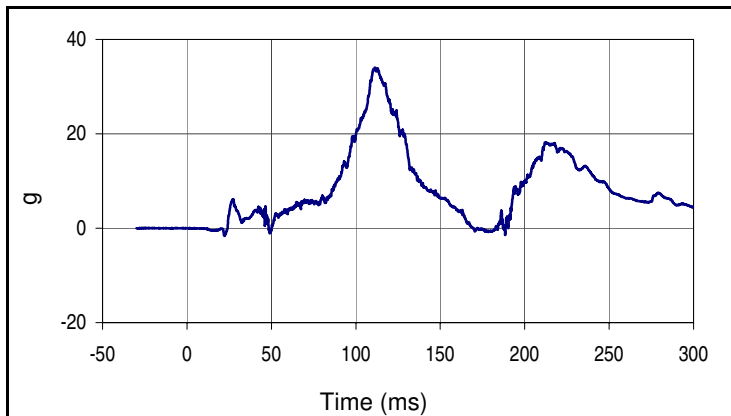
Project No.: P37391-01  
 Test Date: 12/19/17



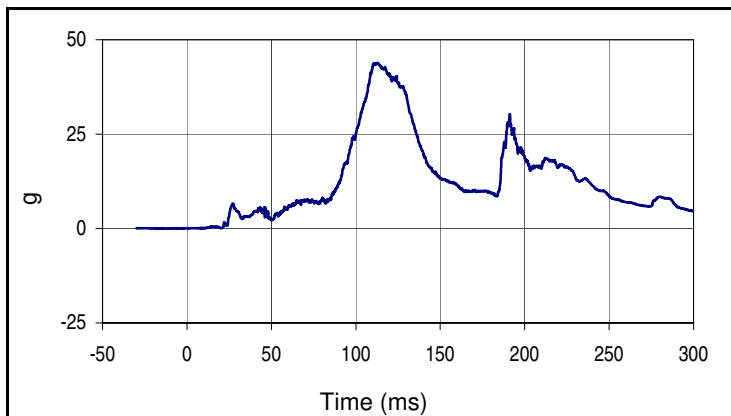
Curve Description			
Passenger Head Acceleration X Primary			
Plot No.		SAE Class	Units
059		1000	g
Max	Time	Min	Time
5.0	284.6	-31.5	125.5



Curve Description			
Passenger Head Acceleration Y Primary			
Plot No.		SAE Class	Units
060		1000	g
Max	Time	Min	Time
8.9	129.5	-1.6	197.2



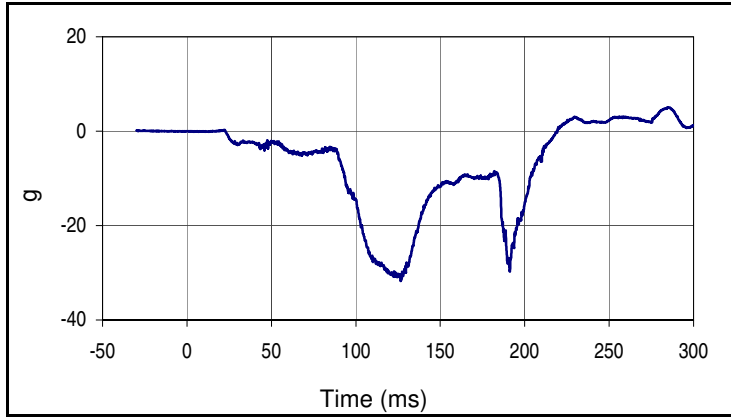
Curve Description			
Passenger Head Acceleration Z Primary			
Plot No.		SAE Class	Units
061		1000	g
Max	Time	Min	Time
34.0	111.3	-1.6	22.2



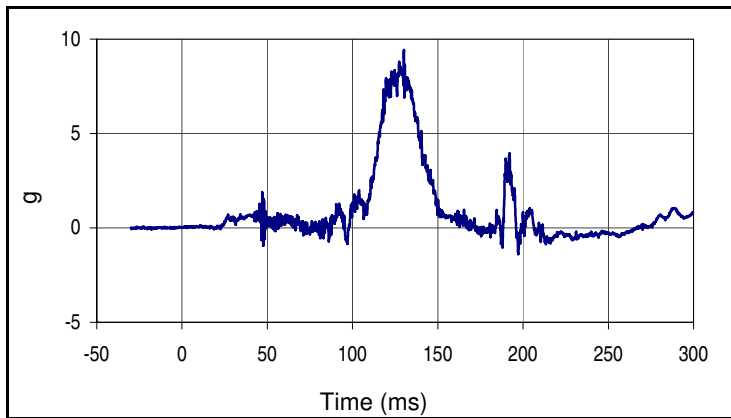
Curve Description			
Passenger Head Resultant Acceleration Primary			
Plot No.		SAE Class	Units
062		1000	g
Max	Time	Min	Time
43.9	113.0	0.0	0.3

Test Vehicle: 2013 Honda Fit 5-Door Hatchback  
 Test Program: 64.4 km/h 40% Moderate Overlap Frontal Impact

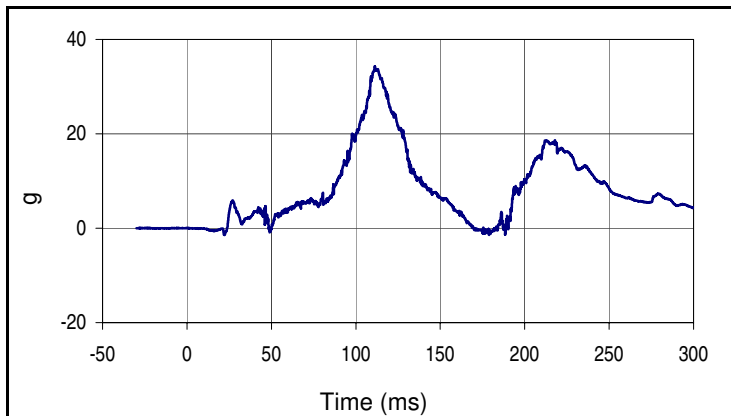
Project No.: P37391-01  
 Test Date: 12/19/17



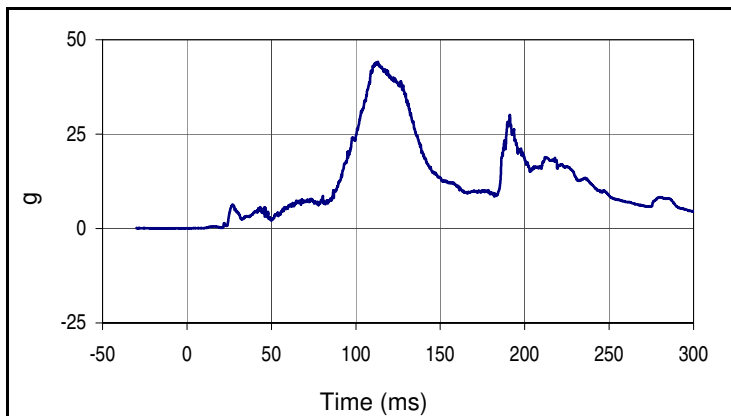
Curve Description			
Passenger Head Acceleration X Redundant			
Plot No.		SAE Class	Units
063		1000	g
Max	Time	Min	Time
5.0	285.5	-31.7	126.7



Curve Description			
Passenger Head Acceleration Y Redundant			
Plot No.		SAE Class	Units
064		1000	g
Max	Time	Min	Time
9.4	130.1	-1.4	197.2



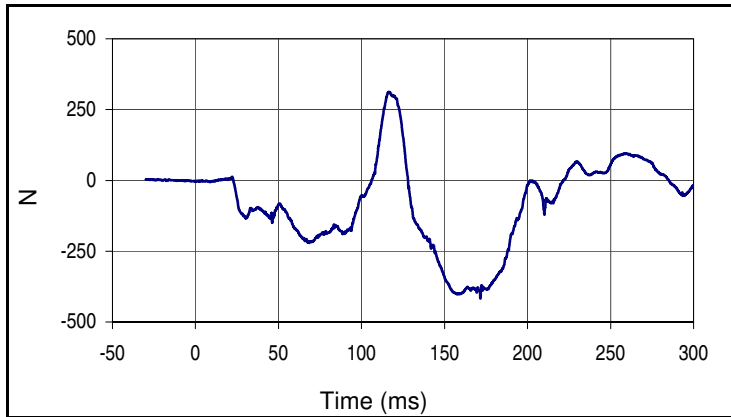
Curve Description			
Passenger Head Acceleration Z Redundant			
Plot No.		SAE Class	Units
065		1000	g
Max	Time	Min	Time
34.3	111.3	-1.4	178.9



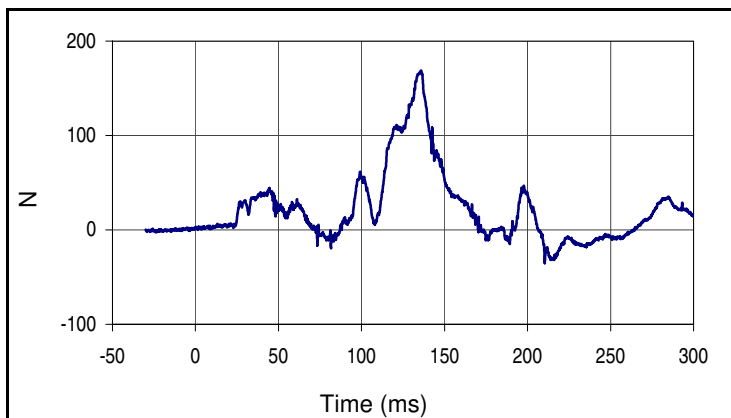
Curve Description			
Passenger Head Resultant Acceleration Redundant			
Plot No.		SAE Class	Units
066		1000	g
Max	Time	Min	Time
44.2	113.1	0.0	0.8

Test Vehicle: 2013 Honda Fit 5-Door Hatchback  
 Test Program: 64.4 km/h 40% Moderate Overlap Frontal Impact

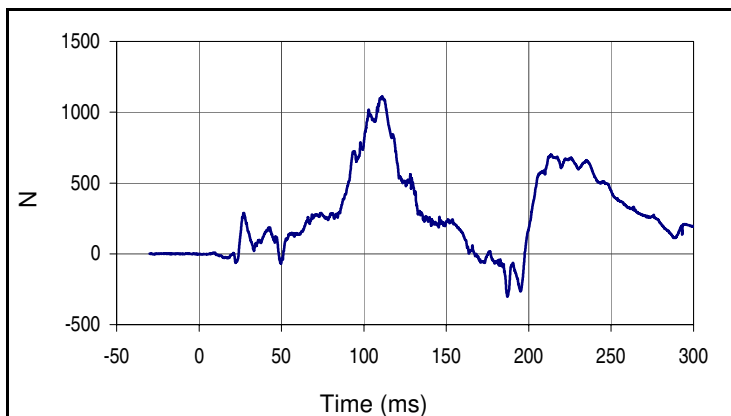
Project No.: P37391-01  
 Test Date: 12/19/17



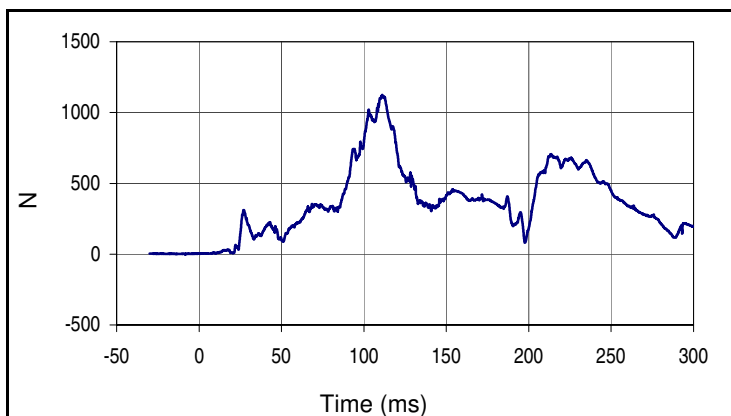
Curve Description			
Passenger Upper Neck Force X			
Plot No.		SAE Class	Units
067		1000	N
Max	Time	Min	Time
312.8	116.7	-418.0	171.6



Curve Description			
Passenger Upper Neck Force Y			
Plot No.		SAE Class	Units
068		1000	N
Max	Time	Min	Time
168.8	135.9	-35.2	210.3



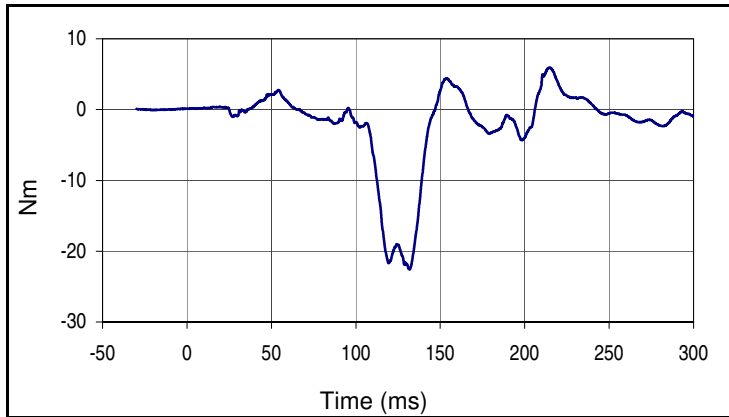
Curve Description			
Passenger Upper Neck Force Z			
Plot No.		SAE Class	Units
069		1000	N
Max	Time	Min	Time
1114.5	111.2	-304.2	187.1



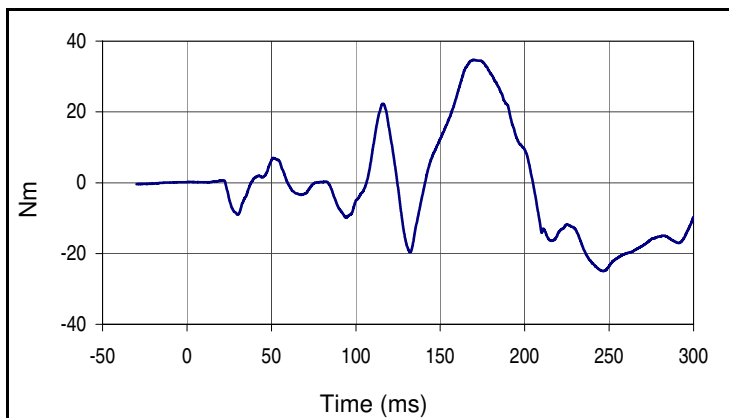
Curve Description			
Passenger Upper Neck Force Res.			
Plot No.		SAE Class	Units
070		1000	N
Max	Time	Min	Time
1125.6	111.2	2.6	0.7

Test Vehicle: 2013 Honda Fit 5-Door Hatchback  
 Test Program: 64.4 km/h 40% Moderate Overlap Frontal Impact

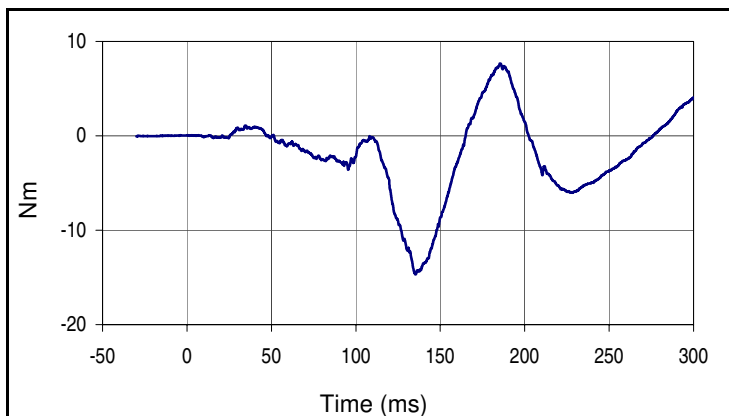
Project No.: P37391-01  
 Test Date: 12/19/17



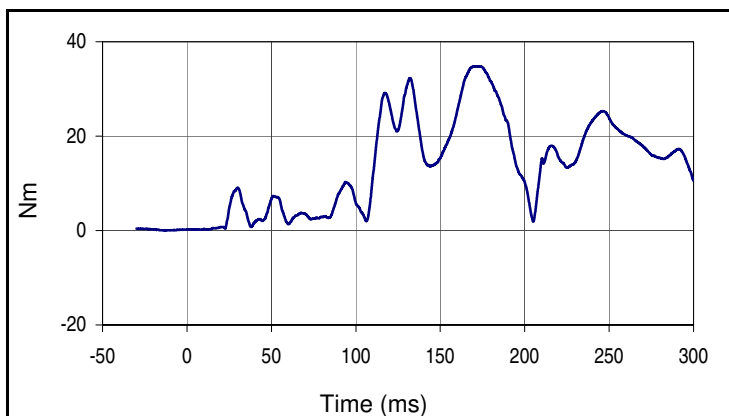
Curve Description			
Passenger Upper Neck Moment X			
Plot No.		SAE Class	Units
071		600	Nm
Max	Time	Min	Time
5.9	214.7	-22.6	131.9



Curve Description			
Passenger Upper Neck Moment Y			
Plot No.		SAE Class	Units
072		600	Nm
Max	Time	Min	Time
34.7	169.6	-25.0	246.5



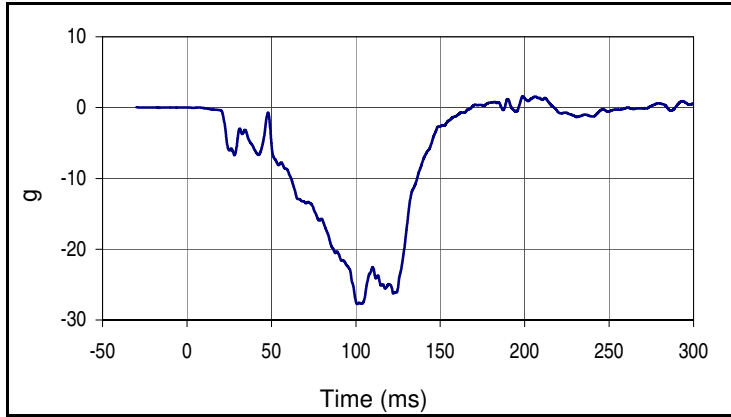
Curve Description			
Passenger Upper Neck Moment Z			
Plot No.		SAE Class	Units
073		600	Nm
Max	Time	Min	Time
7.7	185.4	-14.7	135.4



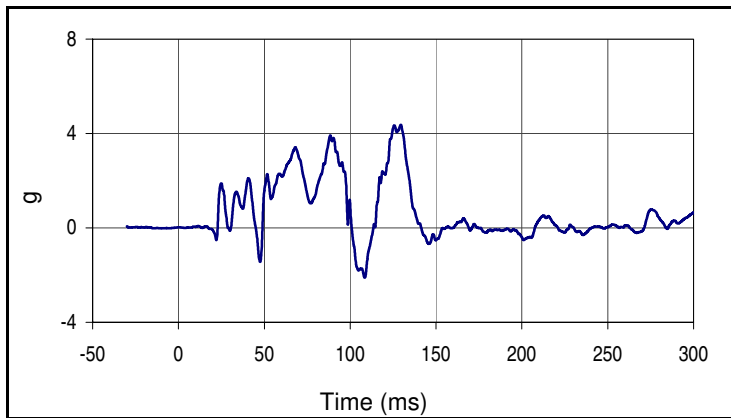
Curve Description			
Passenger Upper Neck Moment Res.			
Plot No.		SAE Class	Units
074		600	Nm
Max	Time	Min	Time
34.8	169.6	0.2	8.3

Test Vehicle: 2013 Honda Fit 5-Door Hatchback  
 Test Program: 64.4 km/h 40% Moderate Overlap Frontal Impact

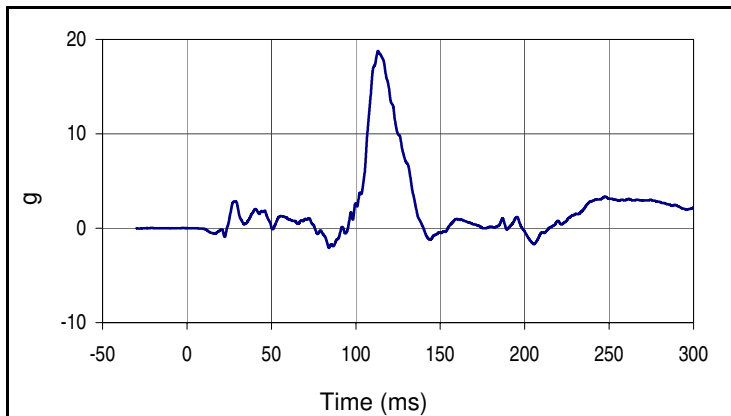
Project No.: P37391-01  
 Test Date: 12/19/17



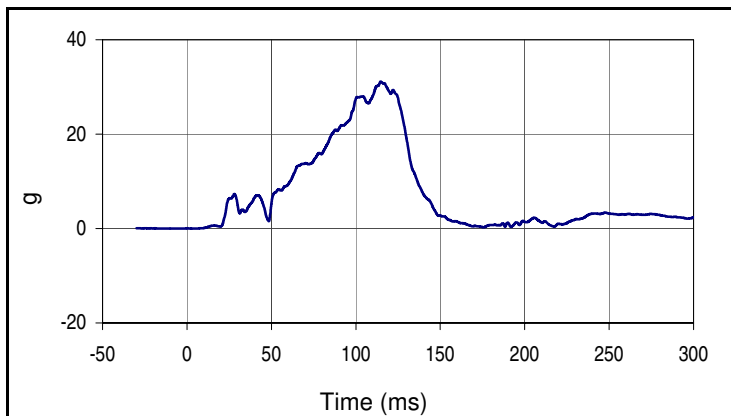
Curve Description			
Passenger Chest Acceleration X Primary			
Plot No.		SAE Class	Units
075		180	g
Max	Time	Min	Time
1.6	198.9	-27.8	100.8



Curve Description			
Passenger Chest Acceleration Y Primary			
Plot No.		SAE Class	Units
076		180	g
Max	Time	Min	Time
4.4	129.5	-2.1	108.5



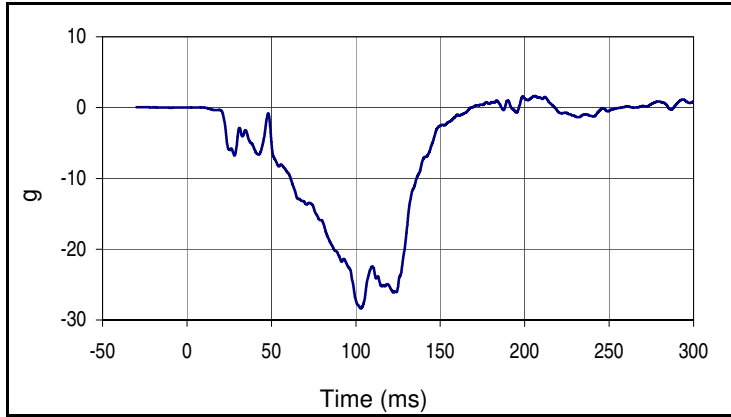
Curve Description			
Passenger Chest Acceleration Z Primary			
Plot No.		SAE Class	Units
077		180	g
Max	Time	Min	Time
18.8	113.1	-2.1	84.1



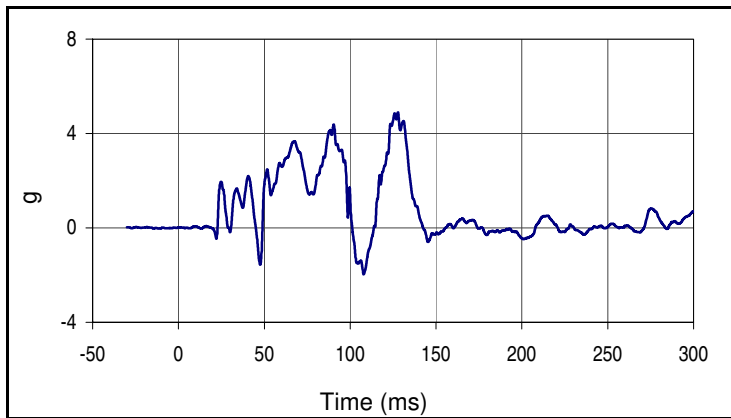
Curve Description			
Passenger Chest Resultant Acceleration Primary			
Plot No.		SAE Class	Units
078		180	g
Max	Time	Min	Time
31.1	114.7	0.0	2.2

Test Vehicle: 2013 Honda Fit 5-Door Hatchback  
 Test Program: 64.4 km/h 40% Moderate Overlap Frontal Impact

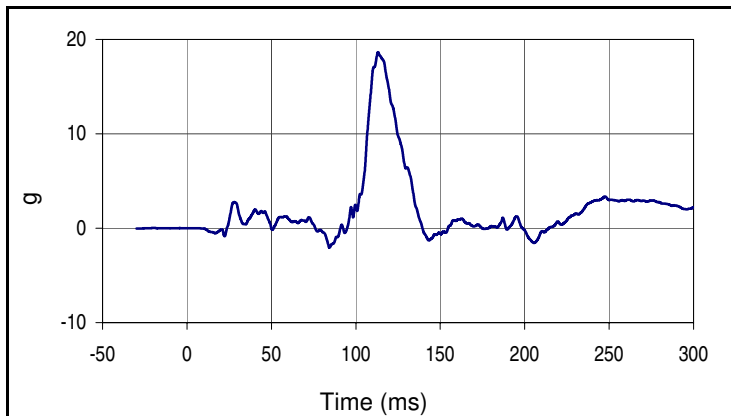
Project No.: P37391-01  
 Test Date: 12/19/17



Curve Description			
Passenger Chest Acceleration X Redundant			
Plot No.		SAE Class	Units
079		180	g
Max	Time	Min	Time
1.6	206.0	-28.4	103.0



Curve Description			
Passenger Chest Acceleration Y Redundant			
Plot No.		SAE Class	Units
080		180	g
Max	Time	Min	Time
4.9	127.8	-2.0	107.9



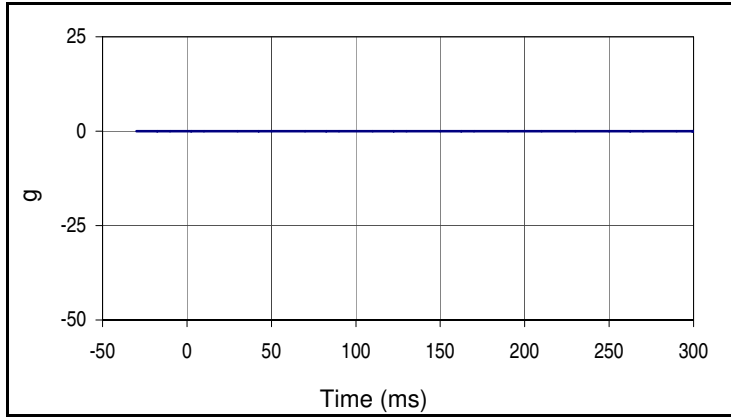
Curve Description			
Passenger Chest Acceleration Z Redundant			
Plot No.		SAE Class	Units
081		180	g
Max	Time	Min	Time
18.7	113.2	-2.1	84.4



Curve Description			
Passenger Chest Resultant Acceleration Redundant			
Plot No.		SAE Class	Units
082		180	g
Max	Time	Min	Time
31.0	114.8	0.0	3.2

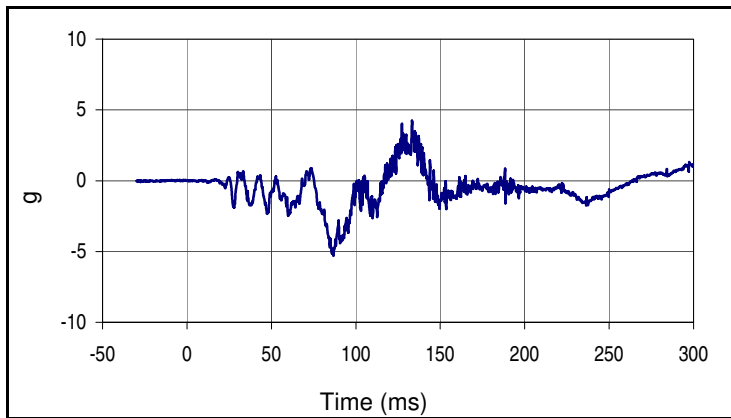
Test Vehicle: 2013 Honda Fit 5-Door Hatchback  
 Test Program: 64.4 km/h 40% Moderate Overlap Frontal Impact

Project No.: P37391-01  
 Test Date: 12/19/17

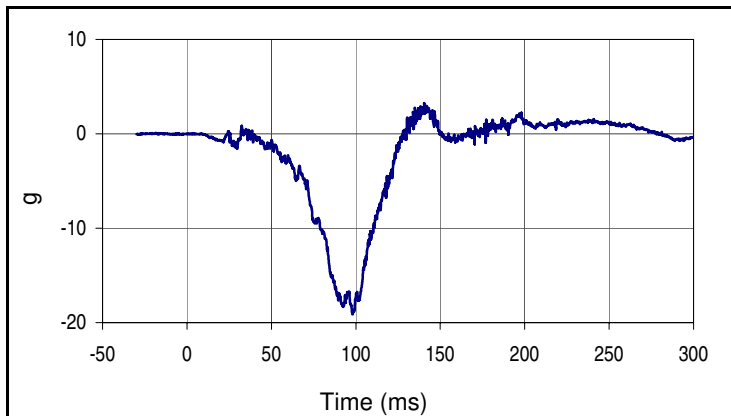


Curve Description			
Passenger Pelvis Acceleration X			
Plot No.		SAE Class	Units
083		1000	g
Max	Time	Min	Time
0.0	0.0	0.0	0.0

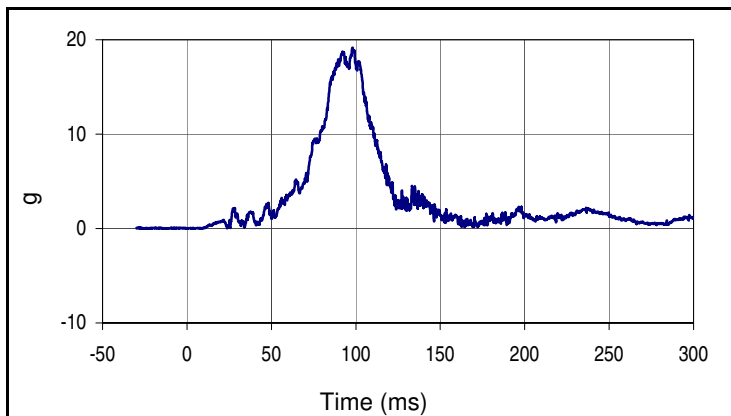
Channel failed, no data



Curve Description			
Passenger Pelvis Acceleration Y			
Plot No.		SAE Class	Units
084		1000	g
Max	Time	Min	Time
4.2	133.3	-5.3	86.8



Curve Description			
Passenger Pelvis Acceleration Z			
Plot No.		SAE Class	Units
085		1000	g
Max	Time	Min	Time
3.3	140.5	-19.1	98.1

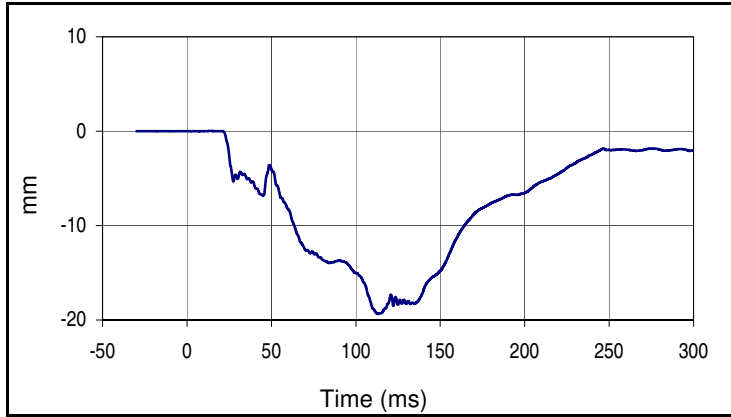


Curve Description			
Passenger Pelvis Acceleration Resultant			
Plot No.		SAE Class	Units
086		1000	g
Max	Time	Min	Time
19.2	98.1	0.0	4.8

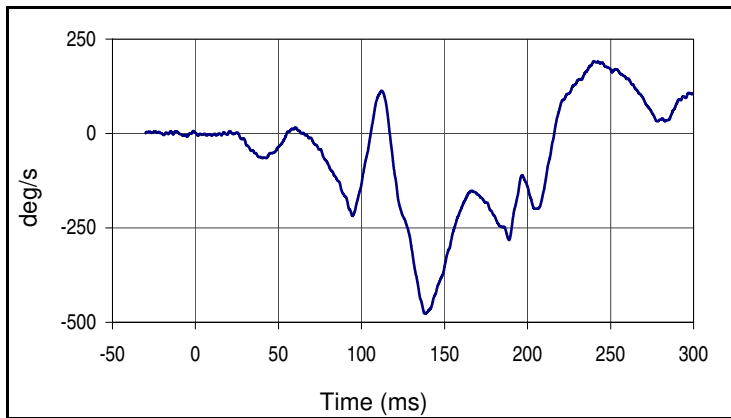
Pelvis X failed, no data

Test Vehicle: 2013 Honda Fit 5-Door Hatchback  
 Test Program: 64.4 km/h 40% Moderate Overlap Frontal Impact

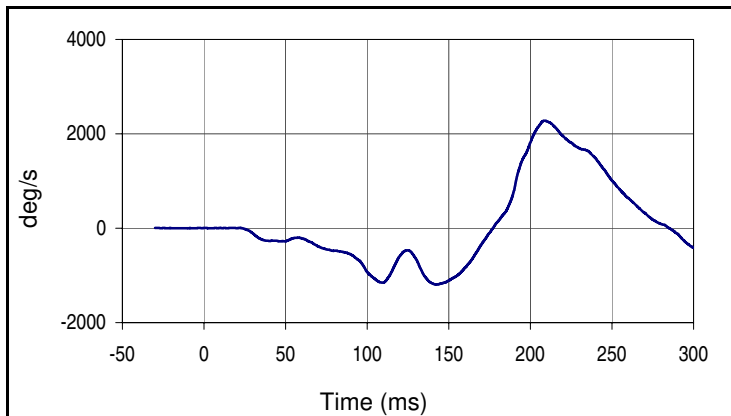
Project No.: P37391-01  
 Test Date: 12/19/17



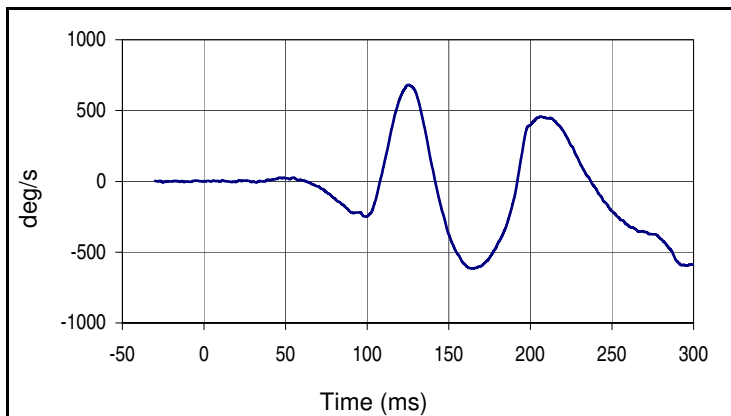
Curve Description			
Passenger Chest Deflection			
Plot No.		SAE Class	Units
087		600	mm
Max	Time	Min	Time
0.0	13.0	-19.4	113.0



Curve Description			
Passenger Head Rotation Rate X			
Plot No.		SAE Class	Units
088		180	deg/s
Max	Time	Min	Time
191.5	240.2	-477.3	138.3



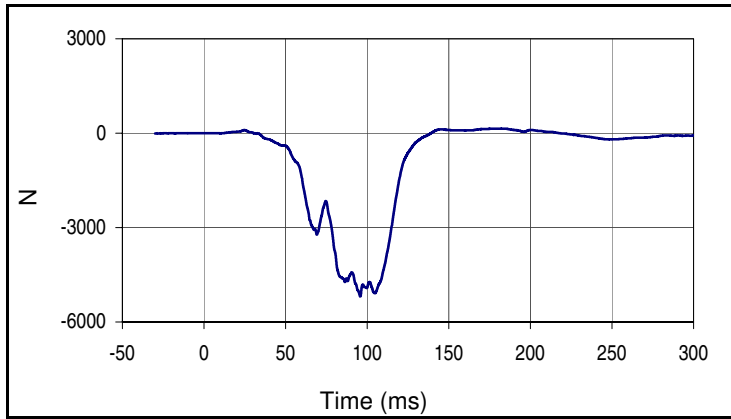
Curve Description			
Passenger Head Rotation Rate Y			
Plot No.		SAE Class	Units
089		180	deg/s
Max	Time	Min	Time
2278.7	208.7	-1191.1	142.2



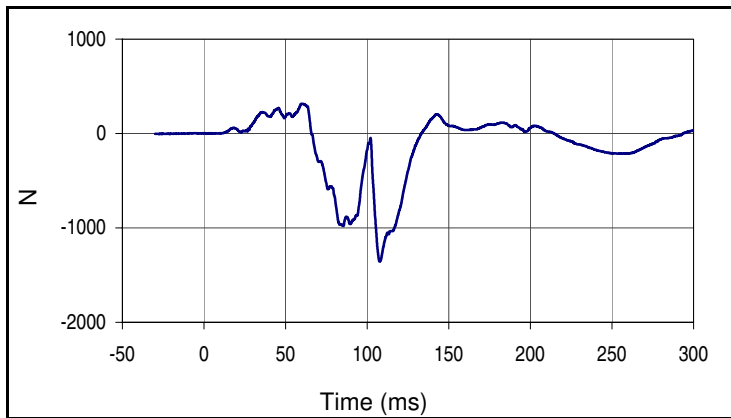
Curve Description			
Passenger Head Rotation Rate Z			
Plot No.		SAE Class	Units
090		180	deg/s
Max	Time	Min	Time
681.6	125.5	-616.4	164.8

Test Vehicle: 2013 Honda Fit 5-Door Hatchback  
 Test Program: 64.4 km/h 40% Moderate Overlap Frontal Impact

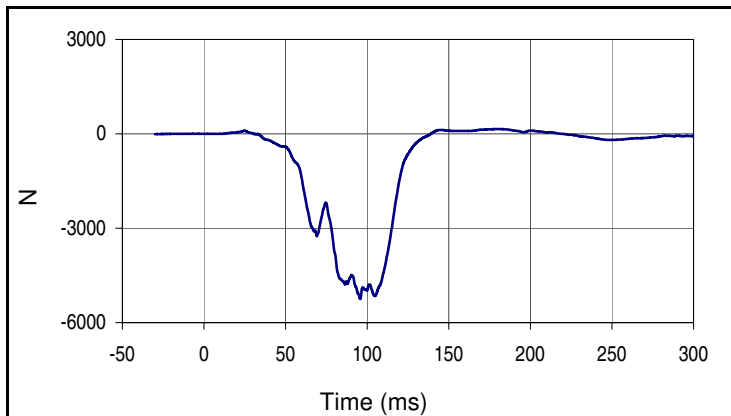
Project No.: P37391-01  
 Test Date: 12/19/17



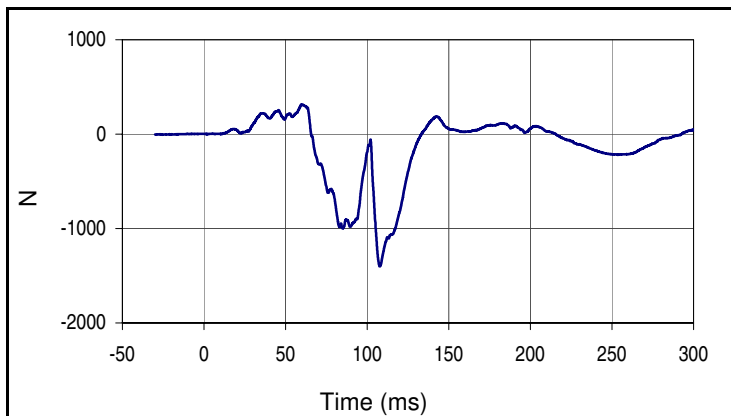
Curve Description			
Passenger Left Femur Force Z			
Plot No.		SAE Class	Units
091		600	N
Max	Time	Min	Time
147.4	177.6	-5184.9	95.8



Curve Description			
Passenger Right Femur Force Z			
Plot No.		SAE Class	Units
092		600	N
Max	Time	Min	Time
315.8	60.1	-1357.1	107.8



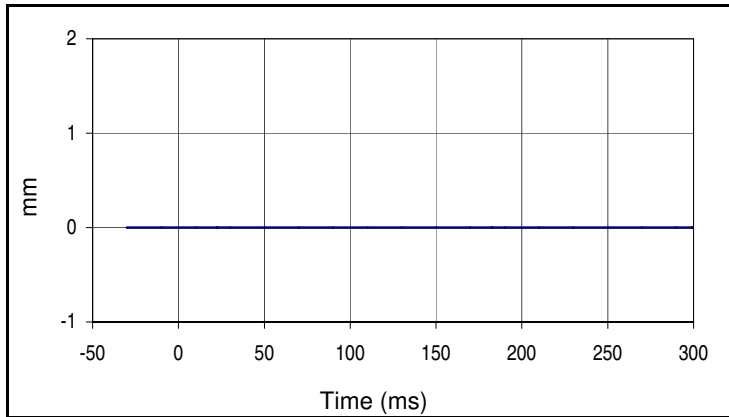
Curve Description			
Passenger Left Femur Force Z Redundant			
Plot No.		SAE Class	Units
093		600	N
Max	Time	Min	Time
151.4	180.1	-5251.5	95.8



Curve Description			
Passenger Right Femur Force Z Redundant			
Plot No.		SAE Class	Units
094		600	N
Max	Time	Min	Time
314.6	60.1	-1399.6	107.7

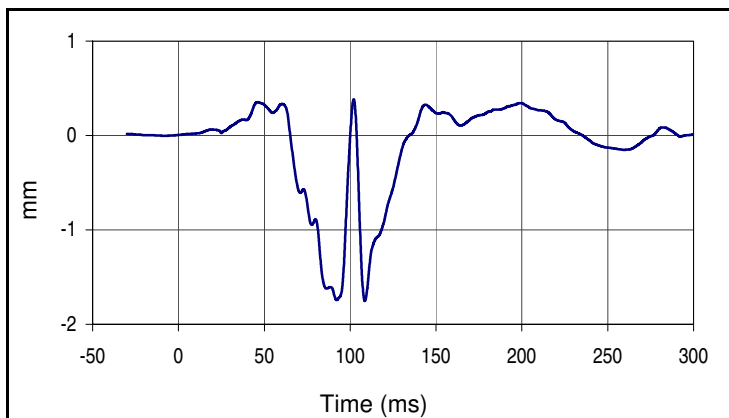
Test Vehicle: 2013 Honda Fit 5-Door Hatchback  
 Test Program: 64.4 km/h 40% Moderate Overlap Frontal Impact

Project No.: P37391-01  
 Test Date: 12/19/17

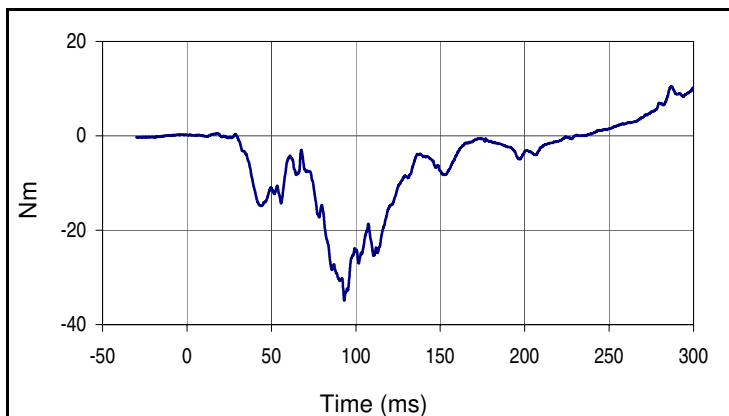


Curve Description			
Passenger Left Knee Deflection			
Plot No.		SAE Class	Units
095		180	mm
Max	Time	Min	Time
0.0	0.0	0.0	0.0

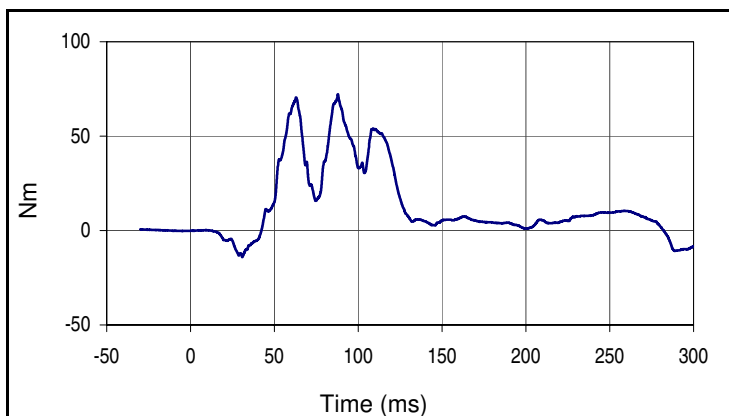
Channel failed, no data



Curve Description			
Passenger Right Knee Deflection			
Plot No.		SAE Class	Units
096		180	mm
Max	Time	Min	Time
0.4	102.1	-1.8	108.6



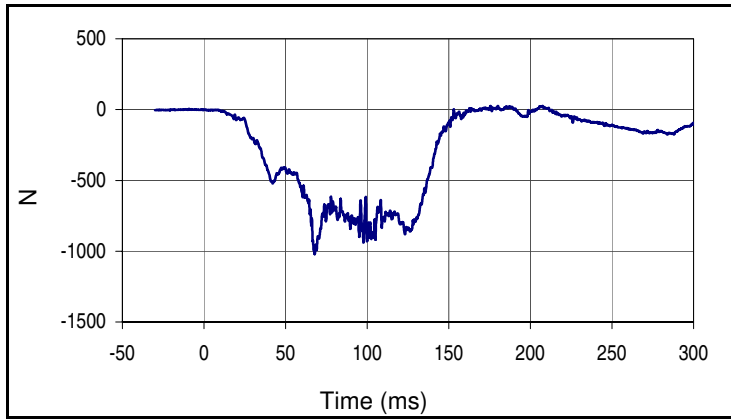
Curve Description			
Passenger Left Leg Upper Tibia Moment X			
Plot No.		SAE Class	Units
097		600	Nm
Max	Time	Min	Time
10.4	286.7	-34.9	93.1



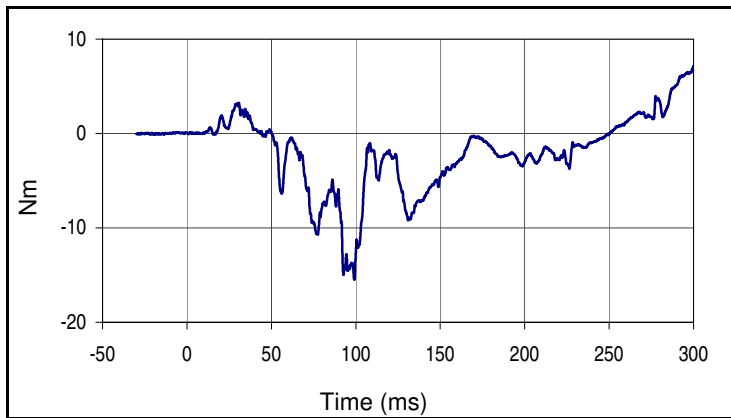
Curve Description			
Passenger Left Leg Upper Tibia Moment Y			
Plot No.		SAE Class	Units
098		600	Nm
Max	Time	Min	Time
72.2	87.8	-14.0	30.9

Test Vehicle: 2013 Honda Fit 5-Door Hatchback  
 Test Program: 64.4 km/h 40% Moderate Overlap Frontal Impact

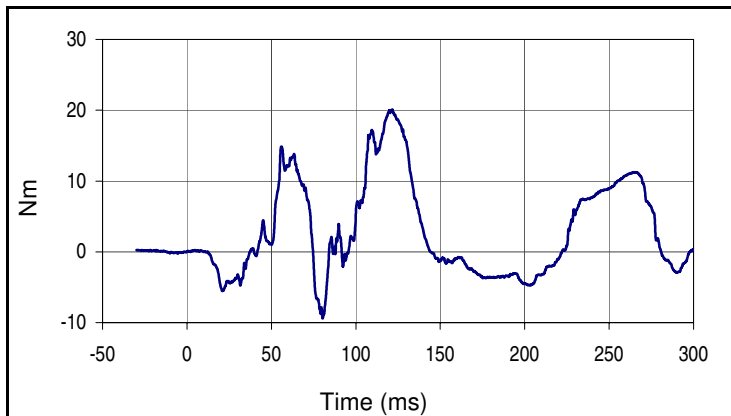
Project No.: P37391-01  
 Test Date: 12/19/17



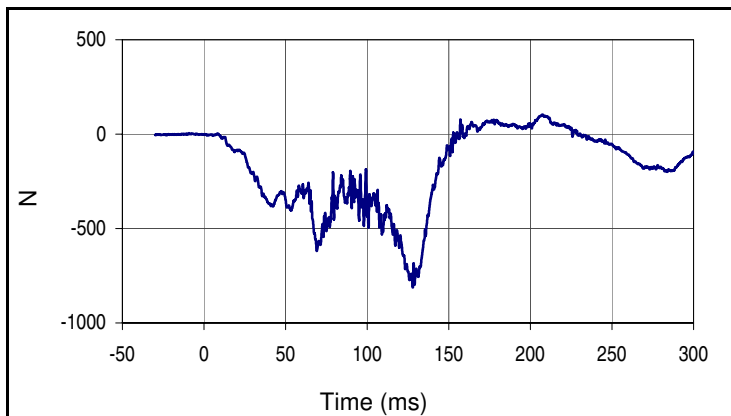
Curve Description			
Passenger Left Leg Upper Tibia Force Z			
Plot No.		SAE Class	Units
099		600	N
Max	Time	Min	Time
26.4	180.1	-1020.4	67.9



Curve Description			
Passenger Left Leg Lower Tibia Moment X			
Plot No.		SAE Class	Units
100		600	Nm
Max	Time	Min	Time
7.1	299.9	-15.5	99.2



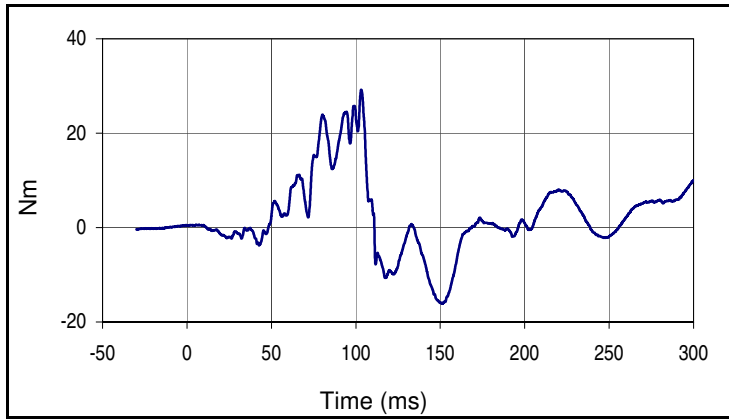
Curve Description			
Passenger Left Leg Lower Tibia Moment Y			
Plot No.		SAE Class	Units
101		600	Nm
Max	Time	Min	Time
20.1	121.5	-9.4	80.3



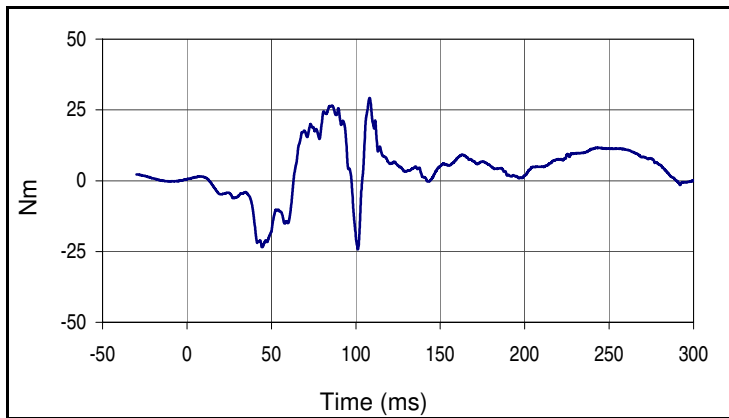
Curve Description			
Passenger Left Leg Lower Tibia Force Z			
Plot No.		SAE Class	Units
102		600	N
Max	Time	Min	Time
103.6	207.6	-812.1	128.0

Test Vehicle: 2013 Honda Fit 5-Door Hatchback  
 Test Program: 64.4 km/h 40% Moderate Overlap Frontal Impact

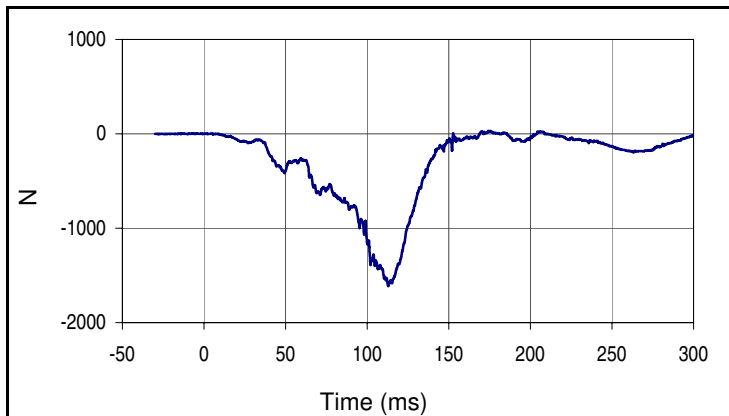
Project No.: P37391-01  
 Test Date: 12/19/17



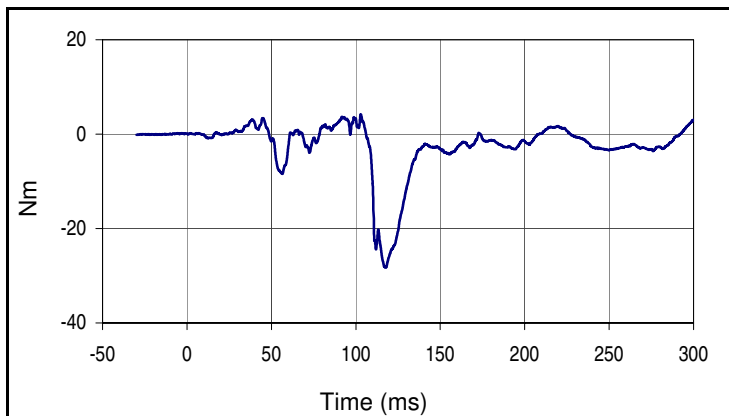
Curve Description			
Passenger Right Leg Upper Tibia Moment X			
Plot No.		SAE Class	Units
103		600	Nm
Max	Time	Min	Time
29.2	103.2	-16.1	151.4



Curve Description			
Passenger Right Leg Upper Tibia Moment Y			
Plot No.		SAE Class	Units
104		600	Nm
Max	Time	Min	Time
29.2	108.2	-24.2	101.2



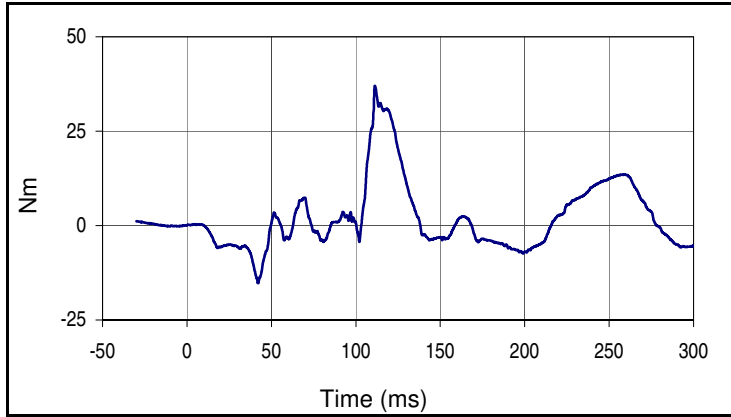
Curve Description			
Passenger Right Leg Upper Tibia Force Z			
Plot No.		SAE Class	Units
105		600	N
Max	Time	Min	Time
31.7	174.3	-1612.1	113.0



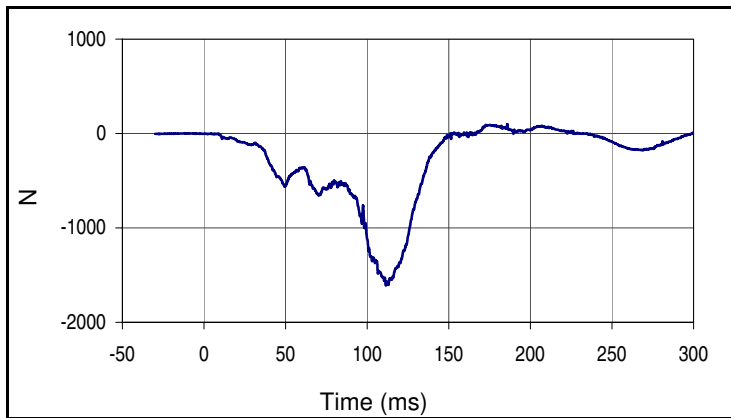
Curve Description			
Passenger Right Leg Lower Tibia Moment X			
Plot No.		SAE Class	Units
106		600	Nm
Max	Time	Min	Time
4.2	103.0	-28.3	117.6

Test Vehicle: 2013 Honda Fit 5-Door Hatchback  
 Test Program: 64.4 km/h 40% Moderate Overlap Frontal Impact

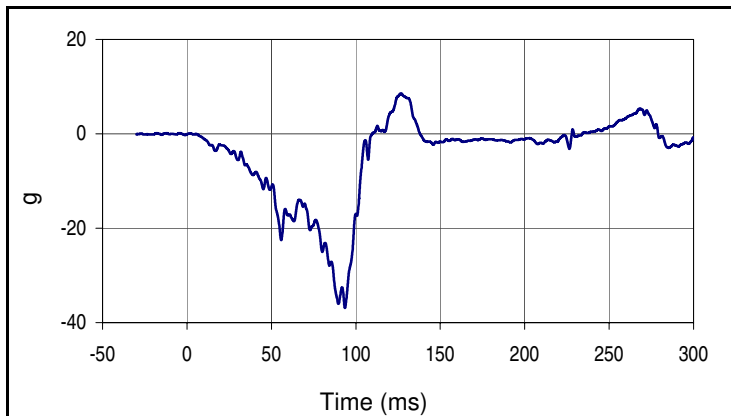
Project No.: P37391-01  
 Test Date: 12/19/17



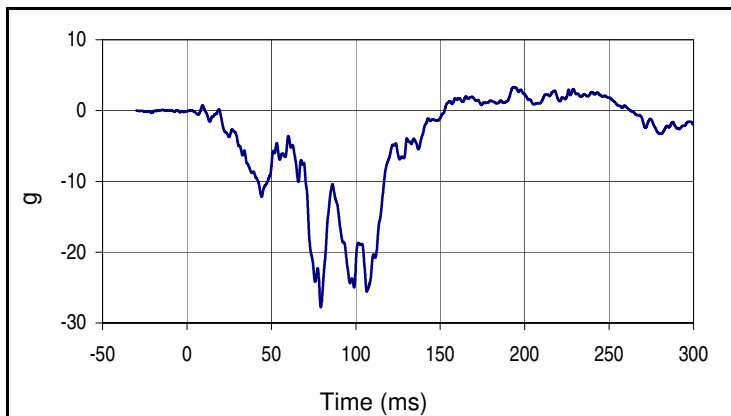
Curve Description			
Passenger Right Leg Lower Tibia Moment Y			
Plot No.		SAE Class	Units
107		600	Nm
Max	Time	Min	Time
37.1	111.3	-15.3	42.2



Curve Description			
Passenger Right Leg Lower Tibia Force Z			
Plot No.		SAE Class	Units
108		600	N
Max	Time	Min	Time
98.7	185.9	-1608.6	111.5



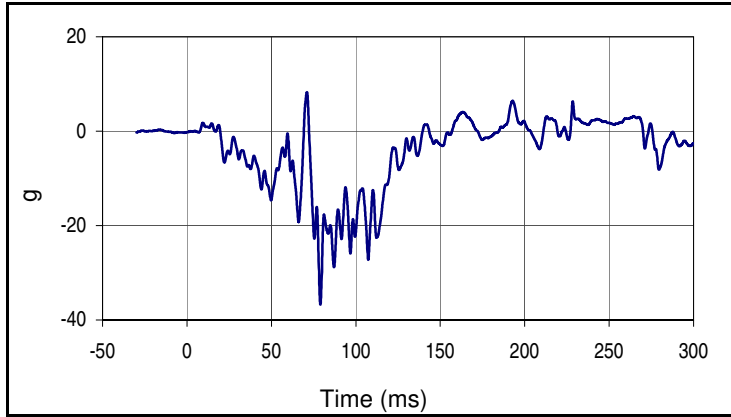
Curve Description			
Passenger Left Ankle Acceleration X			
Plot No.		SAE Class	Units
109		180	g
Max	Time	Min	Time
8.5	126.7	-36.9	93.6



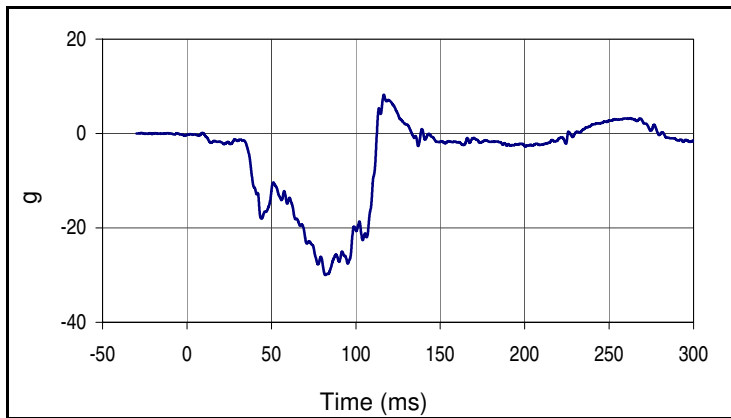
Curve Description			
Passenger Left Ankle Acceleration Z			
Plot No.		SAE Class	Units
110		180	g
Max	Time	Min	Time
3.3	193.6	-27.8	79.3

Test Vehicle: 2013 Honda Fit 5-Door Hatchback  
 Test Program: 64.4 km/h 40% Moderate Overlap Frontal Impact

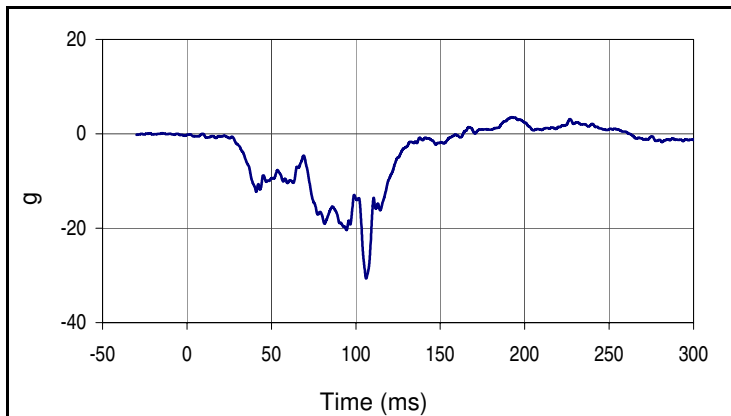
Project No.: P37391-01  
 Test Date: 12/19/17



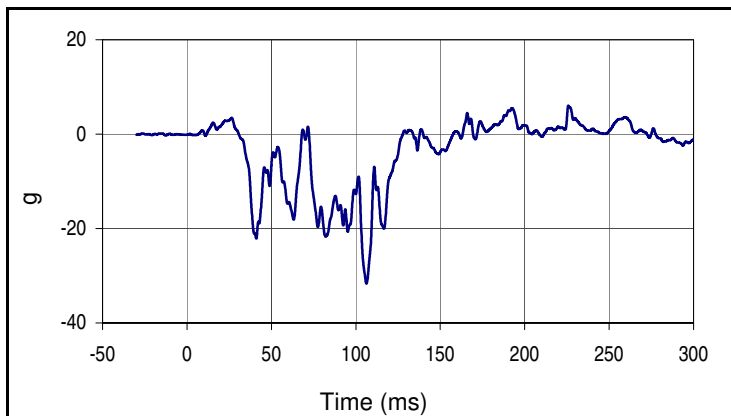
Curve Description			
Passenger Left Foot Acceleration Z			
Plot No.		SAE Class	Units
111		180	g
Max	Time	Min	Time
8.3	71.0	-36.8	79.0



Curve Description			
Passenger Right Ankle Acceleration X			
Plot No.		SAE Class	Units
112		180	g
Max	Time	Min	Time
8.2	116.6	-30.0	81.9



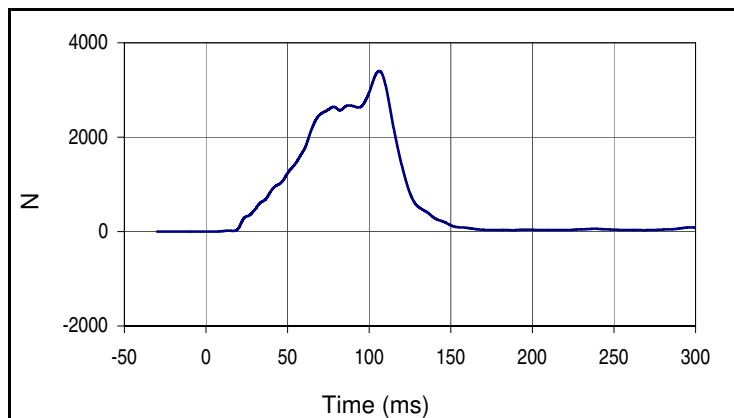
Curve Description			
Passenger Right Ankle Acceleration Z			
Plot No.		SAE Class	Units
113		180	g
Max	Time	Min	Time
3.6	192.2	-30.7	106.1



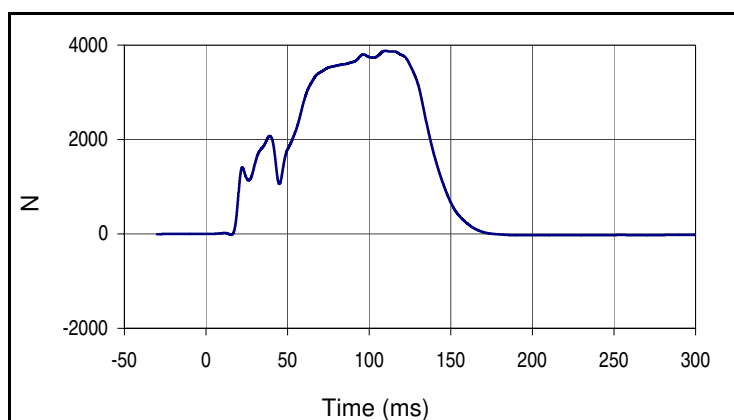
Curve Description			
Passenger Right Foot Acceleration Z			
Plot No.		SAE Class	Units
114		180	g
Max	Time	Min	Time
6.1	225.8	-31.6	106.3

Test Vehicle: 2013 Honda Fit 5-Door Hatchback  
 Test Program: 64.4 km/h 40% Moderate Overlap Frontal Impact

Project No.: P37391-01  
 Test Date: 12/19/17



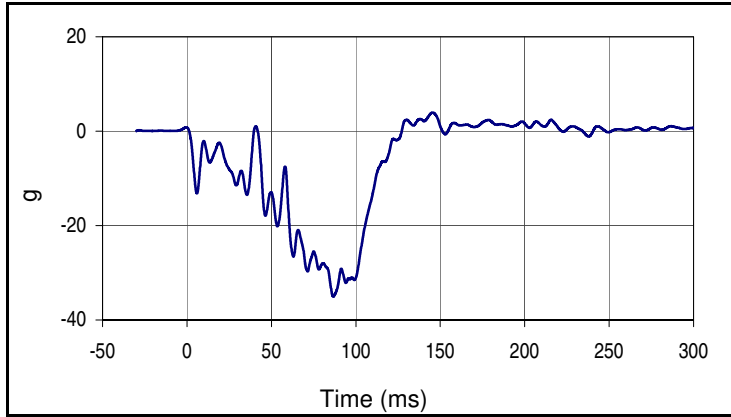
Curve Description			
Passenger Lap Belt Force			
Plot No.		SAE Class	Units
115		60	N
Max	Time	Min	Time
3401.9	106.2	1.0	5.1



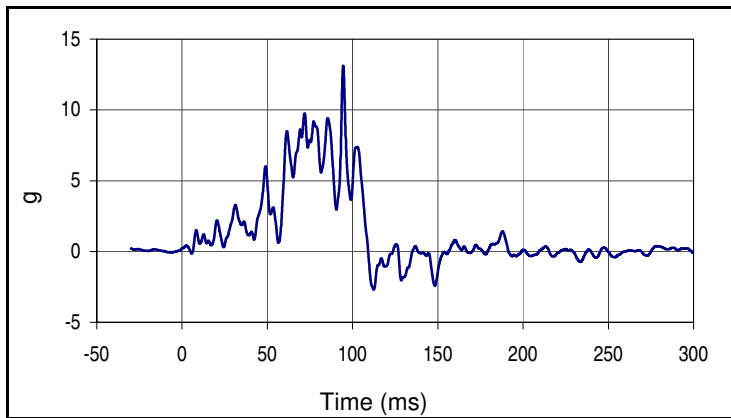
Curve Description			
Passenger Shoulder Belt Force			
Plot No.		SAE Class	Units
116		60	N
Max	Time	Min	Time
3878.0	109.9	-28.1	190.8

Test Vehicle: 2013 Honda Fit 5-Door Hatchback  
 Test Program: 64.4 km/h 40% Moderate Overlap Frontal Impact

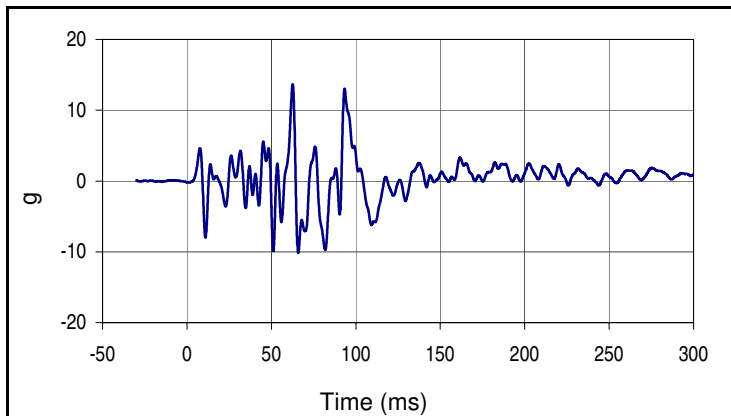
Project No.: P37391-01  
 Test Date: 12/19/17



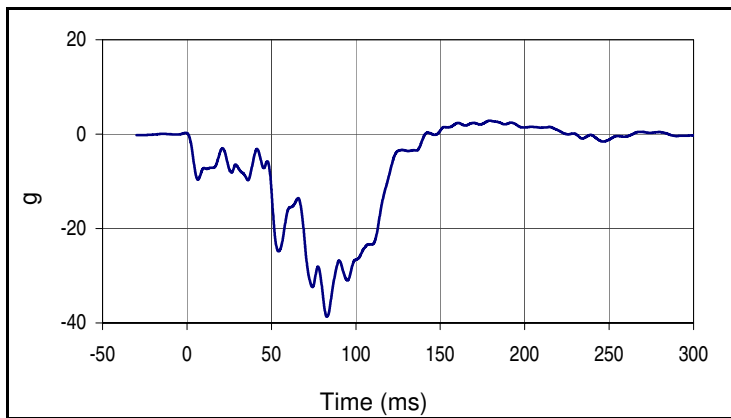
Curve Description			
Vehicle CG - X			
Plot No.		SAE Class	Units
117		60	g
Max	Time	Min	Time
3.9	145.5	-35.0	86.7



Curve Description			
Vehicle CG - Y			
Plot No.		SAE Class	Units
118		60	g
Max	Time	Min	Time
13.1	94.5	-2.7	112.5



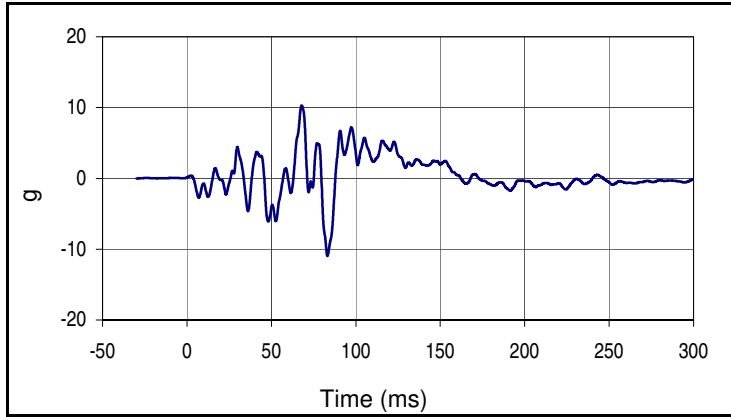
Curve Description			
Vehicle CG - Z			
Plot No.		SAE Class	Units
119		60	g
Max	Time	Min	Time
13.7	62.6	-10.2	65.9



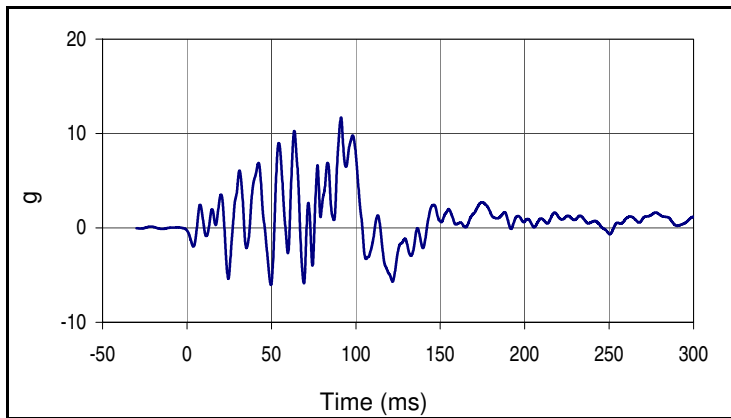
Curve Description			
Vehicle Roof Rail - X			
Plot No.		SAE Class	Units
120		60	g
Max	Time	Min	Time
2.8	179.4	-38.6	82.9

Test Vehicle: 2013 Honda Fit 5-Door Hatchback  
 Test Program: 64.4 km/h 40% Moderate Overlap Frontal Impact

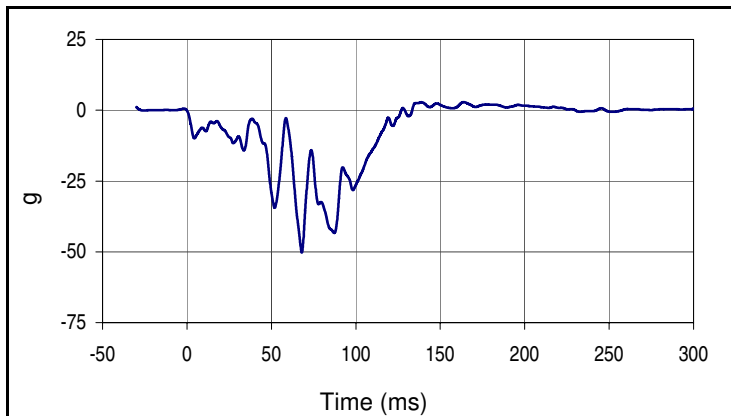
Project No.: P37391-01  
 Test Date: 12/19/17



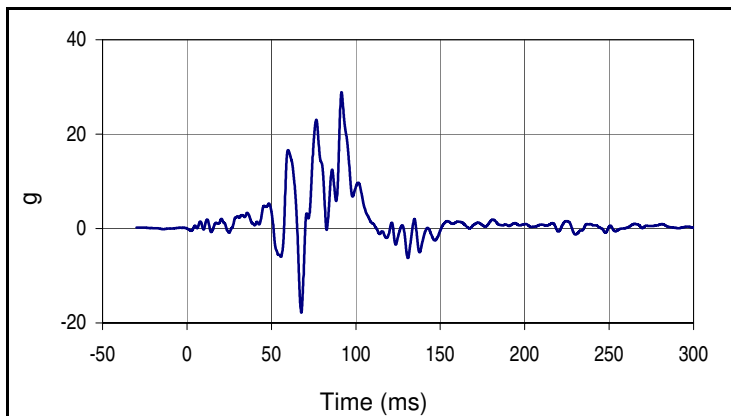
Curve Description			
Vehicle Roof Rail - Y			
Plot No.		SAE Class	Units
121		60	g
Max	Time	Min	Time
10.3	67.9	-11.0	83.2



Curve Description			
Vehicle Roof Rail - Z			
Plot No.		SAE Class	Units
122		60	g
Max	Time	Min	Time
11.7	91.3	-6.0	49.7



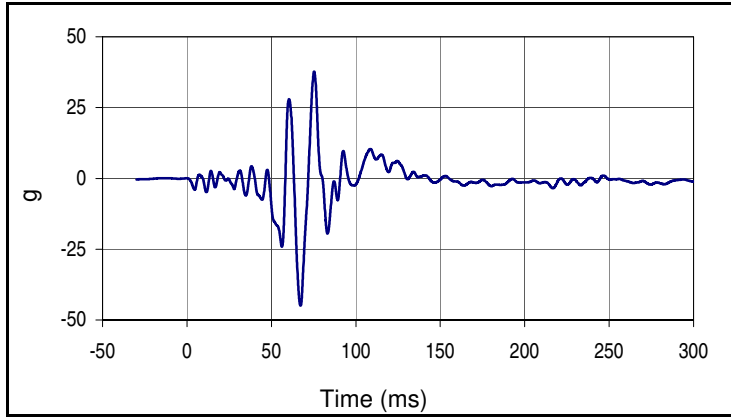
Curve Description			
Vehicle Bottom Frame Rail - X			
Plot No.		SAE Class	Units
123		60	g
Max	Time	Min	Time
2.9	163.8	-50.2	68.0



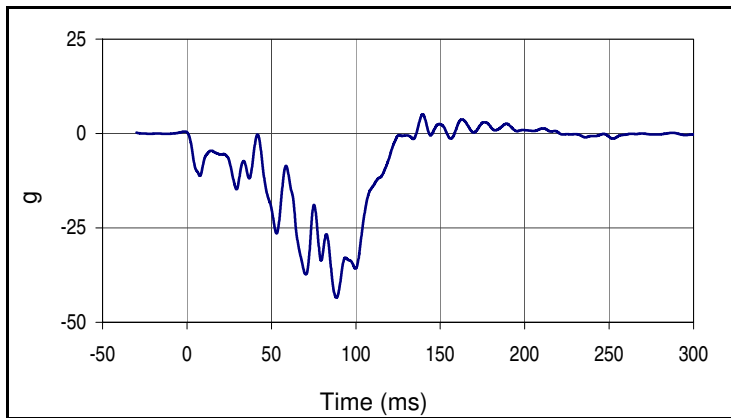
Curve Description			
Vehicle Bottom Frame Rail - Y			
Plot No.		SAE Class	Units
124		60	g
Max	Time	Min	Time
28.9	91.5	-17.8	67.7

Test Vehicle: 2013 Honda Fit 5-Door Hatchback  
 Test Program: 64.4 km/h 40% Moderate Overlap Frontal Impact

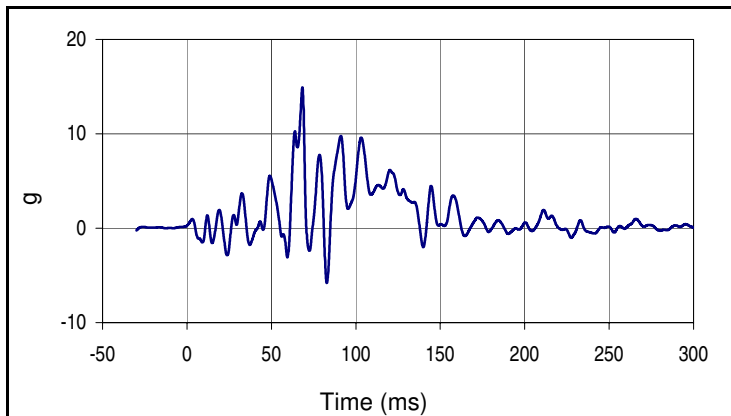
Project No.: P37391-01  
 Test Date: 12/19/17



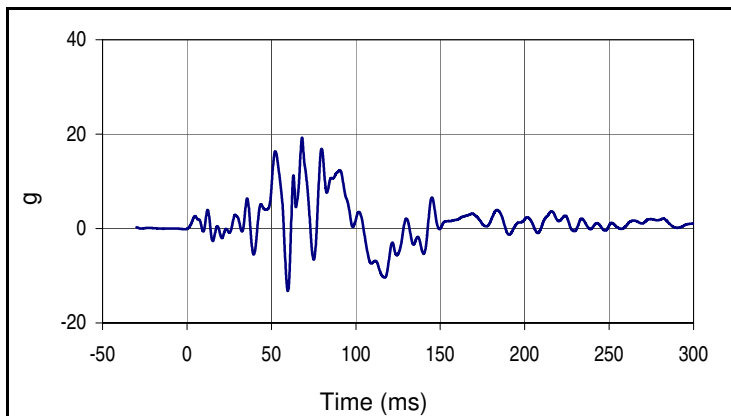
Curve Description			
Vehicle Bottom Frame Rail - Z			
Plot No.		SAE Class	Units
125		60	g
Max	Time	Min	Time
37.7	75.3	-44.9	67.3



Curve Description			
Vehicle Seat Frame - X			
Plot No.		SAE Class	Units
126		60	g
Max	Time	Min	Time
5.1	139.6	-43.5	88.5



Curve Description			
Vehicle Seat Frame - Y			
Plot No.		SAE Class	Units
127		60	g
Max	Time	Min	Time
14.9	68.4	-5.8	82.8



Curve Description			
Vehicle Seat Frame - Z			
Plot No.		SAE Class	Units
128		60	g
Max	Time	Min	Time
19.3	68.2	-13.2	59.8